

**COLLECTION:** Papers of Frank H.H. Roberts at the National Anthropological Archives

**CDI  
ACCESSION  
NUMBER:**

000150

**ERRATA:**

Handwriting on opposite side can be seen through the paper.

**COMMENTS:**

Handwritten and difficult to read in some places.

**CITATION:**

Morgan, Dorothy  
1940 Bc 53, Field Notes. In Papers of Frank H. H. Roberts, Box 8, National Anthropological Archives, Smithsonian Institution, Washington, D. C.



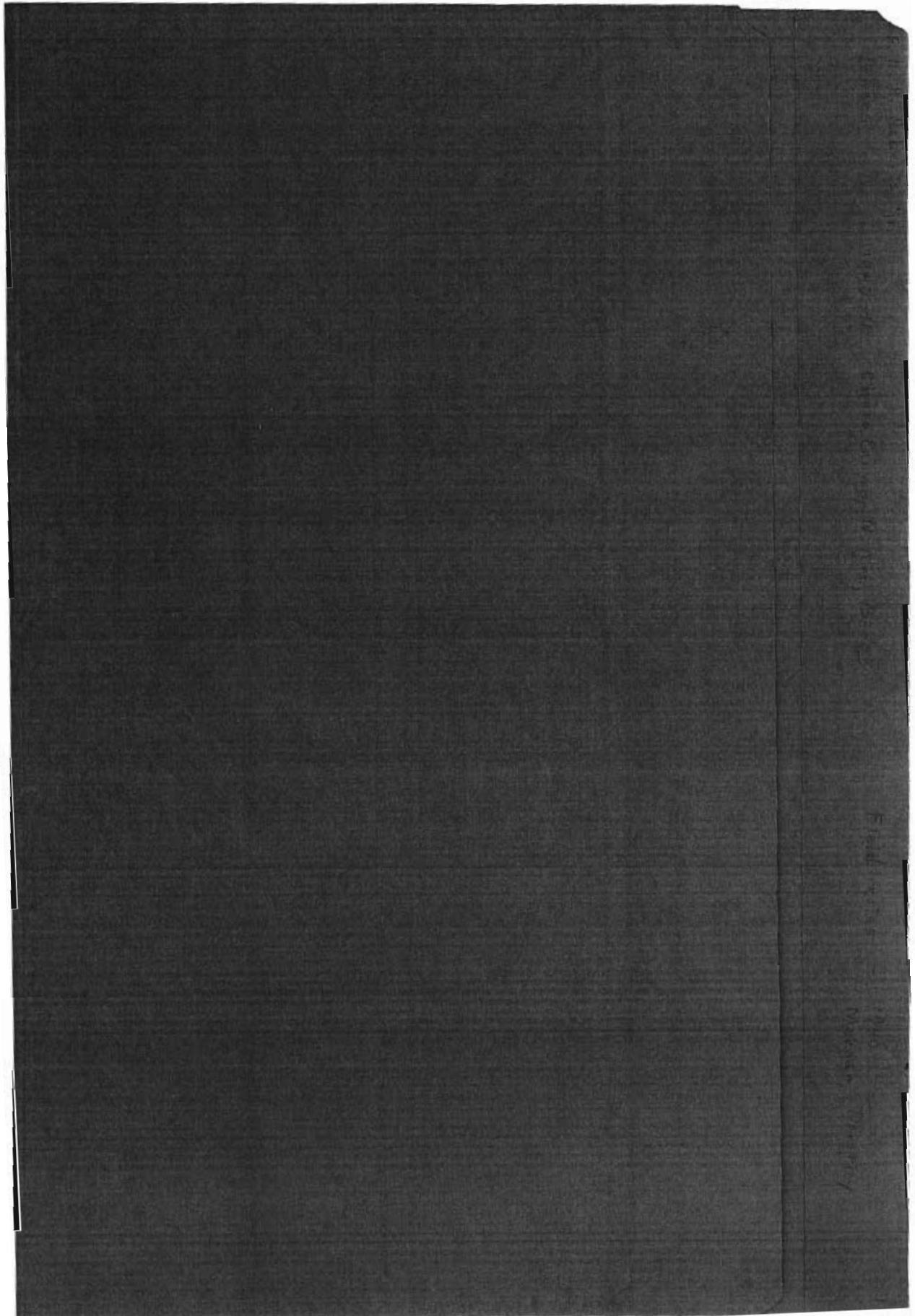
Frank H.H. Roberts Jr.  
4851

Archaeological Sites

Chaco Canyon, NM  
Bc-53

Box 8

NATIONAL  
ANTHROPOLOGICAL ARCHIVES  
SMITHSONIAN INSTITUTION



Dorothy Morgan  
Room 6 BC53 Field Notes



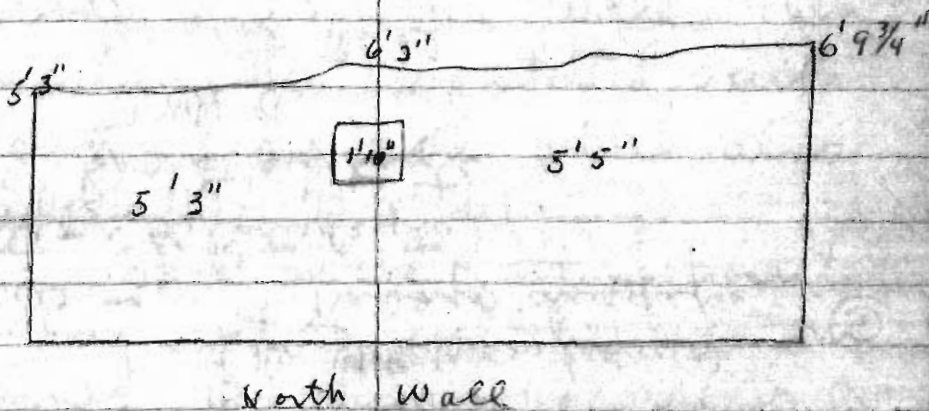
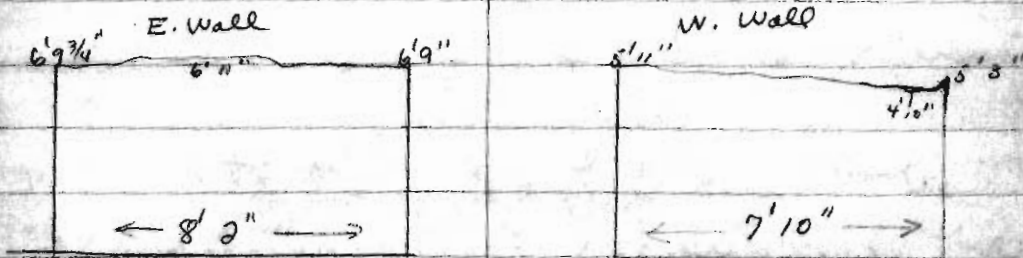
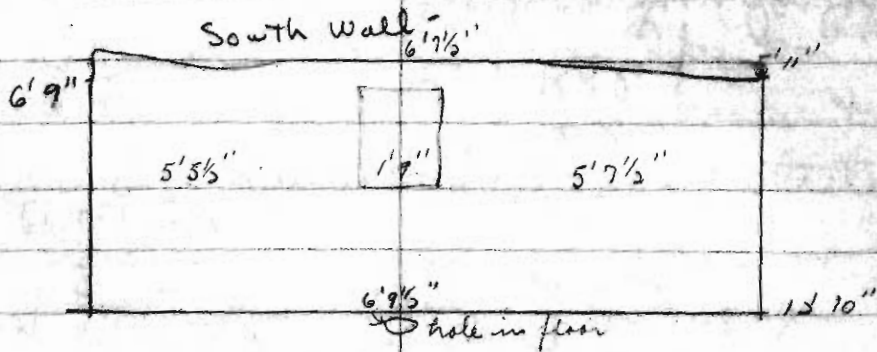
STENOGRAPHER NOTE  
BOOK

BOOK No. 1 FROM Aug 5 TO Aug 29

No. 1677-S

Chicago Dig - BC 53.  
 "Deqis Bek'in"

Room 6 - Floor 6' 11 3/4" from B.M.



Director: Dr F. H. W. Roberts. Jr.  
assistants: Walt Taylor - Dr Jackson  
(Dr C. Miss [unclear])

Crew - Navajo diggers

Section A. (Students)

Dorothy Kyle

Jack Anderson

Ernest Hill

Armand Winfield

John Deacon

Dig Partners - (Bart Greenwood  
Dorothy Morgan  
(Section B)

Ted Stern

Ray Babby

Florence Sunderland

August 5 - 1940

B.C. 53

The Section # (maximum [unclear])

August 5 - 1940

B.C. 53

The Section # (morning group),  
cleared the surface & picked up  
the surface shards & artifacts.  
A drainage trench was dug on the  
south side by the workmen &  
trenches numbered a, b, c, d, e, & started.

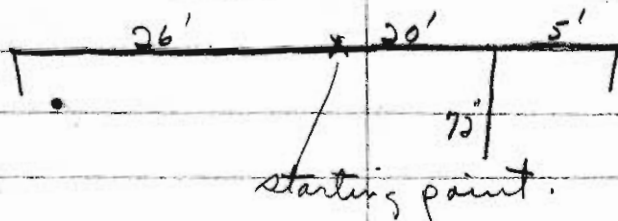
Section B

Bart Greenwood and I were  
assigned to dig for the north  
wall of B.C. 53 & the E. & West  
corners of said wall

Starting East from the  
designated point we dug till the  
rubble replaced the wall. Then  
(on order of Walt) we started south  
along <sup>west side of</sup> a cross wall, which also  
failed after 72" of digging.

Back to the starting point  
we dug west to find the western  
corner. Dr. Wise, the camp  
physician, joined us & we  
located the corner just at 5 o'clock.

finds - 1 mano - 4 feet E. of  
W. corner outside of  
Wall. BC 53 29



The other group started on the  
walls of 2 rooms (number 7 + 2).  
Their material was also put  
into labeled sacks & brought  
into the lab.

(Site marked off in 25' squares to  
be divided as needed, later)

August 6, 1940 - Tuesday.  
Section A:

Rooms 1, 3, 5 & Trench E were

August 6, 1940 - Tuesday.

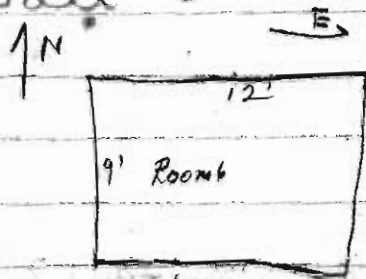
Section A:

Rooms 1, 3, 5 & trench E were started by the morning group - walls were located & followed, first levels started

Section B

Starting at the <sup>inside</sup> N.W. corner where we stopped Monday, I followed the wall south on the inside to the S.W. inside corner -

Bart Greenwood started E on the inside - going to the E. corner, then south to the S.E. corner. We then dug along south inside wall -



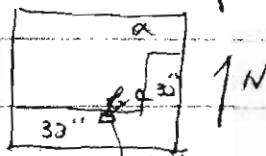


August 17, 1940 - Wednesday.  
Section A

Section B.

We took the first level off of our room this afternoon - leaving an L shaped section along the South + East Walls -

for future stratigraphy study.



- 5 Manos (2 whole)  $0053 \frac{20}{0}$
- 2 rubbing stones  $(0053 \frac{20}{0})$
- 2 partially restorable pots (a+b)
- 2 metates (c) (greenwood)
- Pot sherds.
- Bone material

Hammer stone - 1 - BC 53  $\frac{20}{8}$

August 8 - Thursday

Section A

August 8 - Thursday

Section A

Section B.

The second level was started by excavating one corner (N.W) down 12", then the rest of the level, (with the exception of a space 2' x 3 1/2' in the N.W. corner) was taken out by traveling the fill & shoveling it out.

Material found -:

20 / pot shards

various animal bones

1 bone oval - (N.E corner)

chewed corn & corn stalks

Painted wooden objects

4C53 30  
(Greenwood)

Shaft straightener - 1 - BC 55  $\frac{20}{75}$

August 9 - Friday -

August 9 - Friday -  
Section A

Section B.

The block left of Level 2  
was started - a rodent on a large  
shard was found - 15" from N. Wall,  
53" from W. Wall & 43 1/2" down from  
level level with S. E. corner. When  
this was removed the balance of  
block was finished -

Material of this block =

Skeleton on shard

Pit shards (58)

quartzite <sup>3/4"</sup>

{ Pit cover - South E section

{ Scraper (quartz)

{ Aul sharpener - (29" from E Wall)

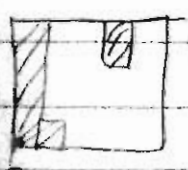
Sec 3 <sup>29"</sup> 19

(over)

Friday - continued

Level 3 was begun  
Morgan began by travelling  
in 14 in in N.W. corner  
greenwood going down 2' out  
from N.E. corner to 4' out -  
(a section - 2x4) to a depth of 1  
foot. Morgan then excavated  
a section 1" in depth along  
west wall - a pit shard was  
encountered 60' 2 of N.W. corner  
along the <sup>west</sup> wall - 47" down -  
this shard was + shaped & drilled.  
(McElmo B/W). work stopped. a  
Pot was located but not removed.

Material found



Pit sherds -

Bc 53 1/3

Pottery Pendant <sup>60ft. on N. wall</sup> <sup>W. wall</sup>  
<sup>depth 47"</sup>

Roof casts (Vegetable remains  
still in situ in cast)



Aug 10 - no work (Section A. worked)  
Aug 11 - ✓ ✓ - Sunday -  
Aug 12 - Monday - Clean up day

Aug 10 - no work (Section A worked)  
Aug 11 - ✓ ✓ - Sunday -  
Aug 12 - Monday - Clean up day

## Section A

## Section B.

Level 3 was completed, taking the room level down to 50" - Morgan took the west half of the room & Greenwood the East half. The floor was cleared off, with the exception of the section in the S. E. corner of the room (18" square). This feature was left because of the matata found in Level 2. After lunch the entire group (Sec. A & B) cleaned

Off the walls & floors in  
preparation for the conference  
material found:

285 Pot shards -

several miscellaneous Bones.

(Morgan) 1 Bone game piece - 45" from N. wall  
BC 53  $\frac{30}{8}$  41" from W. wall 50" down

2 random bone awls

(Greenwood) 1 Bone awl - 24" from N. wall - 91" from  
W. wall - 48" down

" 1 Bone awl - 14" from N. wall - 98"  
from W. wall - 43" down

(Morgan) 1 Bone awl - 26" from N. wall - 34"  
from W. wall - 45" down.

(Greenwood) 1 Point - 26" from N. wall - 45" from  
BC 53  $\frac{27}{9}$  W. wall - 45" down

---

Conference from 8-13 $\frac{1}{2}$ /8-15-40.

August 16, Friday  
Sec. B. (worked all day)  
Greenwood started in the A.W.

August 16, Friday  
Sec. B. (worked all day)

Greenwood started in the A.W. center of the room to take out level 4 - Morgan started excavating in the N.E. corner of the W. half of the room - (Greenwood did all of the shoveling today as Morgan had a <sup>bad</sup> wrist) - The level was taken to "60"

In the afternoon, Greenwood started to take out the feature left in the S.E. corner of the room - Morgan started on level 7 five - this work was begun in the N.W. corner of the room, taking out a trench along the west wall. Work was stopped at 5 - after a feature was located in the S.W. corner of the room -

materials found:

282 Pot sherds

(Greenwood) <sup>50</sup> 50<sup>75</sup> Metate - So. End Center - 30" down -

74" from N wall - 117" from W

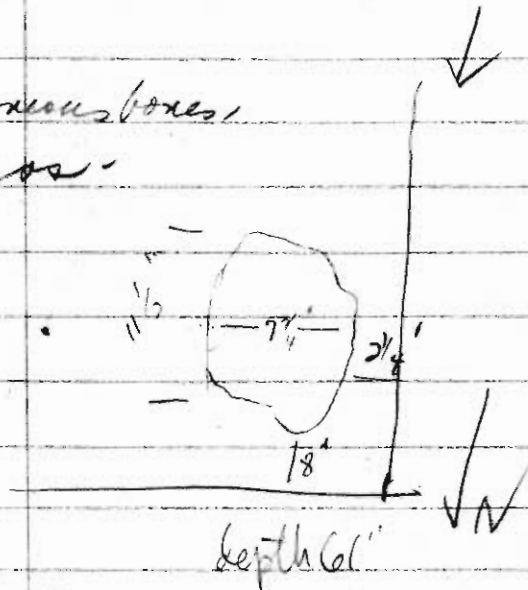
No. End - 35" down - 31" from N wall - 115" from W wall

quarry / Bone ash

10" from N wall - 106" from W wall  
6' down -

a section of hard ash  
was found in the N.W.  
corner of the room - 6'  
down (see diagrams) The  
final level was below this by  
5".

Miscellaneous boxes,  
2 manes.



Dr. Roberts photographed the  
feature in the S.E. corner of room - from  
the N.W. & N.N.W. - at a distance of 9'-4\".  
A section of ash was protruding  
from the W. wall of the feature  
about 6" below metal.

August 17 - Saturday -

Starting at the trench left  
The day before - Monday

from the W. wall of the feature  
about 6" below metal.

August 17 - Saturday -

Starting at the trench left  
The day before - Morgan  
started taking the level 5' ~~off~~  
trenching from no. to South.

Greenwood started in the N.  
center of the room & trenched  
toward the east; he finished  
removing the feature in  
the S.E. corner of the room &  
started leveling the section.

Morgan uncovered a child burial  
on the second trench East of  
the wall - The floor was  
leveled by noon, when we  
quit work, with the exception  
of the two features left in place.

N  
1



Work was started to  
remove the second  
feature, which consisted  
of 3 large slabs over the  
burial & some pottery fragments  
near the skull.

Material Found:

251 Potsherds (included restorable  
epuberaut pot of 31 pieces)

(moyan) 1 across of petrified wood  
73" from N. wall - 9 1/2" from  
west wall - 63" down from  
B.M. 6

(mammal) 1 bone and - 73" from N wall  
9 1/2" from W wall - 65" down.

Miscellaneous animal bones

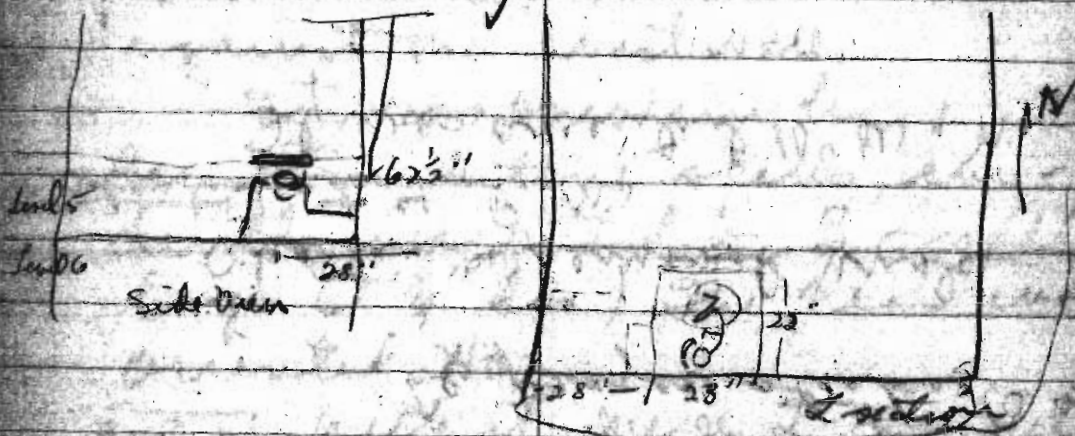
1 mand  
part of a metatarsal - 27" from  
W. wall, 4" from N. wall  
67" down -

~~notebook checked~~

aug 19 - Monday -  
The burial BC53<sup>60</sup> was  
started. mammal & monkey

Aug 19 - Monday -

The burial BC53<sup>60</sup> was started. Guinness & Morgan worked all day instead of working in the lab in the afternoon - The Jones group came over to "look on" in the morning.



The burial was overlain by 4 large stones, one of which had crushed the skull. The body was wrapped in matting & feather cloth - one section of a barrel was beside the head & another piece of a pot was under the pelvic region & feet. Various other shards were found in association with

The burial - some animal bones & some coals were also associated. The removal was not completed by 5 o'clock.

The body was judged to be about 1 yr 1/2 years.

Matting - BC 53  $\frac{35}{1}$ ,  $\frac{35}{2}$ ,  $\frac{35}{4}$   
2 Wood - judged by Lab. to be pruned sticks (C.M.)

Charting & removal was started at 4 P.M.

It was oriented  $10^{\circ}$  W of N.

August 20 - 1940 - Tuesday.

Removal of BC 53  $\frac{60}{1}$  was

August 20 - 1940 - Tuesday.

Removal of BC 53  $\frac{60}{2}$  was completed by 9:30 A.M. and work on BC 53  $\frac{60}{2}$  was begun.

This burial was situated at a depth of  $7\frac{3}{4}$  inches;  $32\frac{3}{4}$  inches from the north wall & was against the west wall.

It was overlain by large sandstone slabs, evidently supported by 2 small logs (1"  $\frac{1}{4}$ " dia.) The head was oriented No.

with it were 2 complete pots. 1 (BC 53  $\frac{10}{9}$ ) was a small red mesa pitcher & the other was a small exuberant bowl (BC 53  $\frac{10}{10}$ ) containing some Cucurbita mesocarpa seeds.

a small fragment of basketry (BC 53  $\frac{25}{8}$ ) was found near the skull. No other burial items were found.

Charting was begun, but not completed.

Sandstone plaque - 1-BC53<sup>20</sup>/<sub>89</sub>

August 21 - Wed.

BC53<sup>60</sup>/<sub>89</sub> was charted & removed. It was found

August 21 - Wed.

BC53  $\frac{60}{2}$  was started  
& removed. It was found  
to be laid on clean sand.

The floor of room 6 was  
cleaned & leveled & preparation  
were made to begin the  
strat. drawing.

August 22 - Thurs.

A hard rain in the evening necessitated trench cleaning + a general "mop up".

The morning group cleaned trenches + general loose dirt from the excavated rooms was removed from the surface.

No actual excavating was done in Room 6, altho Morgan scraped the walls in preparation for strat. drawing.

Greenwood went to Mesa Verde in the afternoon.

August 28 - 1940 Friday

Morgan started the strat. section left in Room 6, starting the E. & S. Walls.

Morgan then moved to Room 2 to help R.S. Bailey in excavating a burial.

Work continued all day -  
Openwork at Mesa Verde

Bailey started the skeletal work at the North (foot) Morgan worked from the South (head) -

The burial (B533 <sup>60</sup>/<sub>3</sub>) was flexed, on the right side - and laid in a stone cist on the room floor. One small leg (B61) was laid lengthwise & 2 cross-wise over the body, matting was laid over the legs and then covered with reeds. The feet were against the north wall & the body extended 44 1/2 inches to the

South. The bones were 4" from  
the East wall.

Work started with the  
uncovering of the masonry  
which was carefully brushed  
& treated. This was removed  
& placed in cotton lined boxes.

Actual uncovering of the  
body was then started. The  
burial was entirely outlined  
when work was halted at 5.

Masonry - BC 53  $\frac{31}{6}$

August 24, 1940 - Saturday

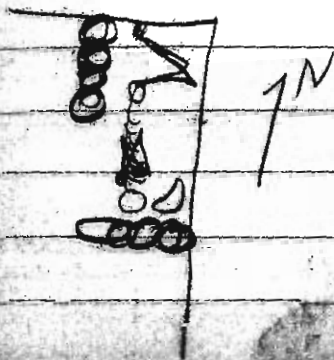
Morgan worked as dir

August 24, 1940 - Saturday

Morgan worked again  
with Riley excavating the  
burial BC 53  $\frac{60}{3}$

The bed was completely  
uncovered, the bones brushed  
and treated - preparations  
were made for charting  
& photographing. Work  
stopped at 11:30. One skull was  
found.

Riley returned in the  
afternoon, cleaned the floor  
& room. Photographs were  
taken & movies made by  
F. Sunderland.



Monday: Aug 26, 1940

Morgan & Kite went  
with Frank Hibben to  
Largo to work on the  
Pit house there, at the  
junction of the Blanco &  
Largo. Were gone all  
day.

Baby checked BC 53  $\frac{60}{3}$

Tuesday: Aug 27, 1940 -

Baby went to Fargo today,  
so Morgan removed the  
Burial BCS 3  $\frac{62}{2}$  from Room  
2, moving to Room 6 as  
soon as this was completed.

Work in room 6 consisted  
of removing Level 2, the  
strat section. (Greenwood had  
removed Level 1 on the previous  
day.) Level 3 was started  
but not completed.

Wednesday, August 28, 1940

Margaret Greenwald  
removed Level 3 & half of  
Level 4 This morning of the  
strat. section.

1 pottery animal

(not cataloged in Lab  
as yet)

Thursday, August 29, 1940

Morgan worked alone in Room 6 - as Greenwood had gone to Largo. Working on level 4 - a Navajo was assigned to her - she watched the dirt thrown out by him for shards, etc. a burial BC 53  $\frac{6}{4}$  was encountered by the worker at 10:15. Morgan then started work on it.

1<sup>st</sup> uncovering a large stone slab - 18" x 29" - along the S. Wall - 26" from the W. Wall. Work stopped here at 11:20.

In the afternoon Baily & Morgan uncovered the burial.

No artifacts, but several shards, were in association.

The burial was semi-flexed -

lying on the right side - facing the South Wall.

The burial was in excellent condition.



From the mid section down,  
but the upper part was  
disturbed. The skull was  
crushed - hand bones, the  
atlas & axis, and several skull  
fragments were inside the  
skull. The left radius & ulna  
were under the skull, between  
that & the mandible, the left  
radius was under the ribs &  
on the vertebrae - The right  
arm (complete) was at the right  
side.

no artifacts -

Pat's hands -

after the burial was removed  
& sacked, the navajo threw  
out the rest of the dirt -  
The floor was cleaned & the  
room measured.

Conclusions -

Pat's - 30 - 40 - 50 - 60 - 70 - 80 - 90 - 100 - 110 - 120 - 130 - 140 - 150 - 160 - 170 - 180 - 190 - 200 - 210 - 220 - 230 - 240 - 250 - 260 - 270 - 280 - 290 - 300 - 310 - 320 - 330 - 340 - 350 - 360 - 370 - 380 - 390 - 400 - 410 - 420 - 430 - 440 - 450 - 460 - 470 - 480 - 490 - 500 - 510 - 520 - 530 - 540 - 550 - 560 - 570 - 580 - 590 - 600 - 610 - 620 - 630 - 640 - 650 - 660 - 670 - 680 - 690 - 700 - 710 - 720 - 730 - 740 - 750 - 760 - 770 - 780 - 790 - 800 - 810 - 820 - 830 - 840 - 850 - 860 - 870 - 880 - 890 - 900 - 910 - 920 - 930 - 940 - 950 - 960 - 970 - 980 - 990 - 1000

## Conclusions —

Pottery - 70 per level - Room	Strat
Level I - 0" - 19"	
Red Mesa	3.11 0.8
Kana-a <sup>B/W</sup>	1.24
Forested Sm.	.62
Gallup	17.40 9.8
Escavada	15.54 13.1
Exuberant	45.9 60.3
McElmo	5.59 9.8
Chaco <sup>B/W</sup>	4.96
Unigate con	5.59
" B/R	— 3.3
Bluff B/R	— .8
	99.95 97.9
	161 shanks 122

Level 2 - 19" 35" Room strut

Red mesa	3.82	1.6
Kana-a B/w	1.15	
Gallup	16.21	17.3
Escamado	11.96	8.3
Esmeralda	56.75	62.9
Mc Elmo	3.47	4.7
Chaco B/w	1.15	
Menjate B/c	4.24	2.4
" corr		2.0
Limogray	.382	
La Plata B/w	.382	
Atajo R/O	.382	
Blackman B/R		0.8
	99.98	100.0
	259 struts	254

Level 3 35" 50" Room strut

Red mesa 7.1

Level ~~B~~ 35<sup>2</sup>-50' from start

Red Mesa	7.1
Kana-a B/W	.3
Gallup	19.6
Escondido	16.8
Exuberant	49.3
Mc Edmo	.3
Chaco B/W	.3
Wingate B/R	11.7
" low	11.0
Forestdale Sm.	.7
abajo R/O	.3
	<hr/>
	100.1

2970 herds.

50'-60"

Level 4 Room Street

Kana-a B/w .4

Gullup 26.3

Escondido 11.9

Emberant 52.0

McElmo 3.3

Charco B/w 2.2

Verigato B/w 2.2

Cor. .4

Forstdele Inc. 1.5

100.2

270 charts.

Level 5 - 60' - 73' Room Street

Do A ...

April 5 - 60" - 73" From street

Del mesa	6.4
Gallup	24.6
Escondido	10.4
Embudo	53.5
Mc Elmo	1.4
Forestdale	2.2
Akajo R/O	2.6
Chico Cir.	1.8

99.97

357 shares

Level 6-73 to floor - (79")

	room	strat
Red Mesa	.8	
galleys	21.8	
Es combs	8.3	
Campers nest	60.1	
McElmo	5.3	
Forest Hill	3.8	
	<u>100.1</u>	

133 shanks.

Artifacts found.

B053- $\frac{10}{3}$  - Pottery Pendant  
 2.10 - Pitcher (B. 7. 1. 1.)

Artifacts found.

BC53 - $\frac{10}{3}$ -	Pottery Pendant
$\frac{10}{7}$	Pitcher (Burial #2)
$\frac{10}{10}$	Urn ( " " )
$\frac{10}{13}$	Pottery Jar

BC53 $\frac{20}{6}$	Polishing stone
$\frac{20}{7}$	?
$\frac{20}{8}$	Hammer stone
$\frac{20}{9} - \frac{20}{12}$	Grooved dx man
$\frac{20}{10} - \frac{20}{11}$	
$\frac{20}{13} - \frac{20}{19}$	shyft straightener
$\frac{20}{14} - \frac{20}{15}$	man
$\frac{20}{20}$	Pot cover
$\frac{20}{23}$	metate
$\frac{20}{37}$	Placque
$\frac{20}{47}$	Surguina's pendant
$\frac{20}{57}$	worked stone

BC53  $\frac{22}{4}$   
 $\frac{22}{2}$   
 $\frac{22}{1}$   
 $\frac{22}{10}$

Stone 23/1/11  
 " "  
 answer head  
 " "

BC53  $\frac{30}{4}$   
 $\frac{30}{2} - \frac{30}{27}$   
 $\frac{30}{10}$   
 $\frac{30}{11}$   
 $\frac{30}{12}$   
 $\frac{30}{13}$   
 $\frac{30}{14}$   
 $\frac{30}{15}$   
 $\frac{30}{17}$   
 $\frac{30}{19}$   
 $\frac{30}{24}$   
 $\frac{30}{40}$   
 $\frac{30}{50}$   
 $\frac{30}{57}$

Bone  
 " game  
 " avl  
 " "  
 " "

Horn  
 Bone avl

BC53  $\frac{35}{1}$   
 $\frac{35}{2}$

Burial Matting  
 " Raibett

BC53  $\frac{35}{1}$   
 $\frac{35}{2}$   
 $\frac{35}{4}$   
 $\frac{35}{5}$

Burial Matting  
" Basketry  
" matting  
" "

unrooked material

Corn cobs

Cucurbita Moscata

Corn stalks

Pinon

Cockle burr (sp?)

Roof casts

Burials BC53  $\frac{60}{1} + \frac{60}{2} + \frac{60}{4}$

Mr. Roberts -

I appreciate working  
with you this summer.  
It was grand & valuable  
experience.

DM