

COLLECTION:

Hyde Exploring Expedition at the American Museum of Natural History

**CDI
ACCESSION
NUMBER:**

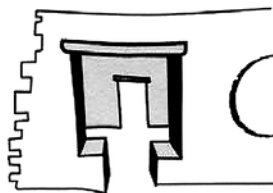
000155

ERRATA:**COMMENTS:**

Notebook contains drawings, field notes, maps, room measurements, etc., glued to each page. There is a particular focus on the refuse mounds at Pueblo Bonito and "Burial Mound 1," "Burial Mound 2," etc.

CITATION:

Pepper, George
n.d. Pueblo Bonito, Wetherill R., Pepper, G., 2/Folder 1. In Hyde Exploring Expedition, American Museum of Natural History, New York City.



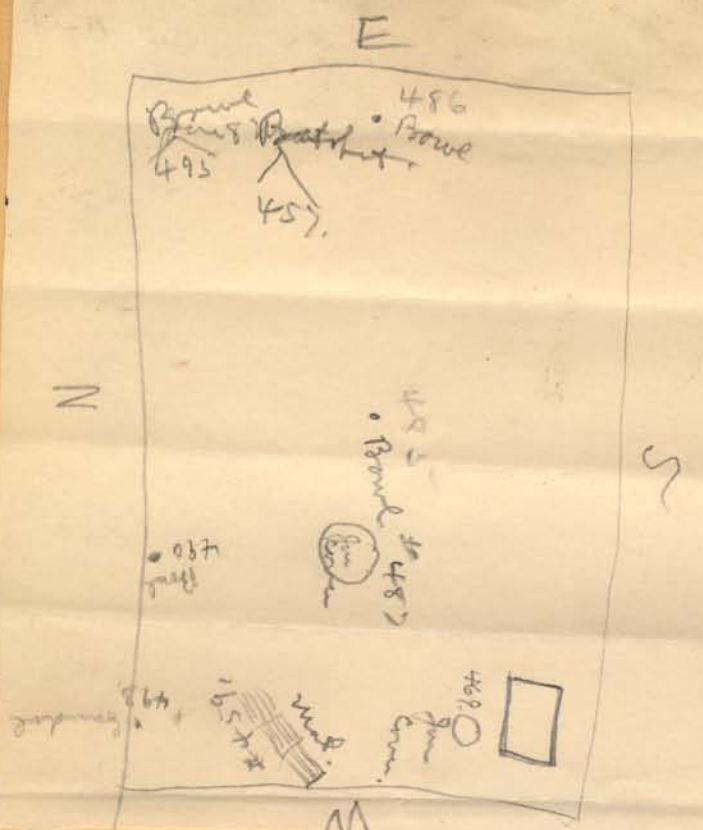
CHACO DIGITAL INITIATIVE

PUEBLO BONITO

Wetherill, R.
Pepper, G.

RECORDS

99



Room #2
 Pot found
 against North
 wall 4 feet
 South East of
 West Wall
 resting a few
 inches from floor

Room

R-#2.

- #1 - Jet Bead found 1' from N. end of S. end of the western wall of passage way and 2'-6" below surface.
- #2 - Bird Totem found 5' from N. end of the western wall of passage way and 1'-3" below surface, near the eastern wall, in the passage.
- #3 - Bone awl found 15'-6" N. end of wall in the passage way 1'-11" below surface, near the eastern wall.
- #4 - Stone ornament found 11'-6" from N. end of wall and 3' below the surface near western face of the passage way.
- #5 - Bone awl found 15'-6" N. end of wall and 3'-9" below the surface in the passage way near E. wall.
- #6 -

Large Refuse Heap. Bonito

- #7 - Bone core, found 12'-5" from S. end of wall in the passage way and 9" below the surface near the western wall.
- #8 - Small shell, found 15'-6" from southern end of wall and 1'-6" below the surface near the S. wall in the passage way.
- #9 - Bone pipe found 17'-7" from the N. end of wall and 2'-9" below the surface near the outer (W) part of the western wall of end.
- #10 -

- #11 - Split bone, found 4' from southern end of wall and 1'-4" below the surface near the eastern wall in the passage way.
- #12 - Stone pipe core (clayham), found 14'-4" from the southern wall in the passage way and 3'-6" below the surface near the western wall.

Jet bead about on

- #8 Small dist. 15'-6" from southern end of wall 1'-6" deep against eastern wall in passage way.
- #2 Bird bone 8'-6" from N. end of wall in the passage way and 1'-3" below the surface near eastern wall
- #3 Bone and 12'-6" from N. end of wall in passage way 2'-10" beneath surface near eastern wall.
- #5 Bone and 15'-6" from N. end of wall and 3'-8" beneath surface. in the passage way near the E. wall
- #11-4 ft. from S end of wall 10-4" below surface near E wall in passage way.

Large Refuse Heap. Bones
 6 - Bone and found near Eastern wall.
 1 2 3 4 5 6 7 8 9 10 11 12 13 14 15

#15 - Bone and, found 1' south of the western wall, 1' west of the wall, and 2'-6" deep.

1 - A pit had about one inch in diameter was found one foot below the surface near the top of 1' deep.
 Agorita Tunisia - the Indians name.

2 - A jolly figure of a bird was found near the top of the mound between the walls.
 3 - Bone and found 1 foot below the jolly figure but near the western wall.

4 - Red Stone found near western wall
 5 - Bone and near East Wall

Profile Measurements

The two steps were situated at the entrance to the passage way through the mound at the northern end. The lowest step was 3 1/2' above the bottom level of the mound. It was 3' long and 11" wide. The next step was 10" above the one - it was 11-7" wide. The entrance end was 11-1" wide at the entrance end and 3' long. The next step was 10" above the second and was made of stone facing to the current in a double entrance to the end.

Reference 16 of 5 of Bonito - (George)

Length of Bonito in the South End

(Front) was 523'

Width of left of centre doorway

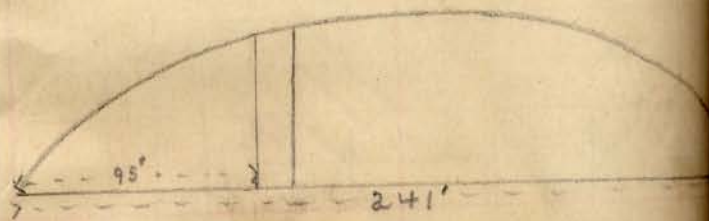
North 308 1/2'

Eschya # 21 - 33'-7" - 33'-5" - 34'-4"

" # 2 - 53'-7" - 52'-5"

" # 6 - 33'-4" - 31'-7" - 29'-7"

REFUSE HEAP
OR
MOUND A.



Large Refuse Heap
Bonito



This room ² surface enclosed by situated in the walls which West Central were 25'-7" long of the Pueblo, on the North side, was filled - 25' on the South the debris side, 7'-10" on the fallen wall East end - and 7'-5" on the West.

The walls of the northern of the room layed to the west of the - did not put on the so they projected the surface few feet. Squat on east over the east surface of

The first specimen of importance to be found was a piece of copper that had been hammered. Dr. Brudden was on the ground when this piece was found. When this piece was found in

R-28.

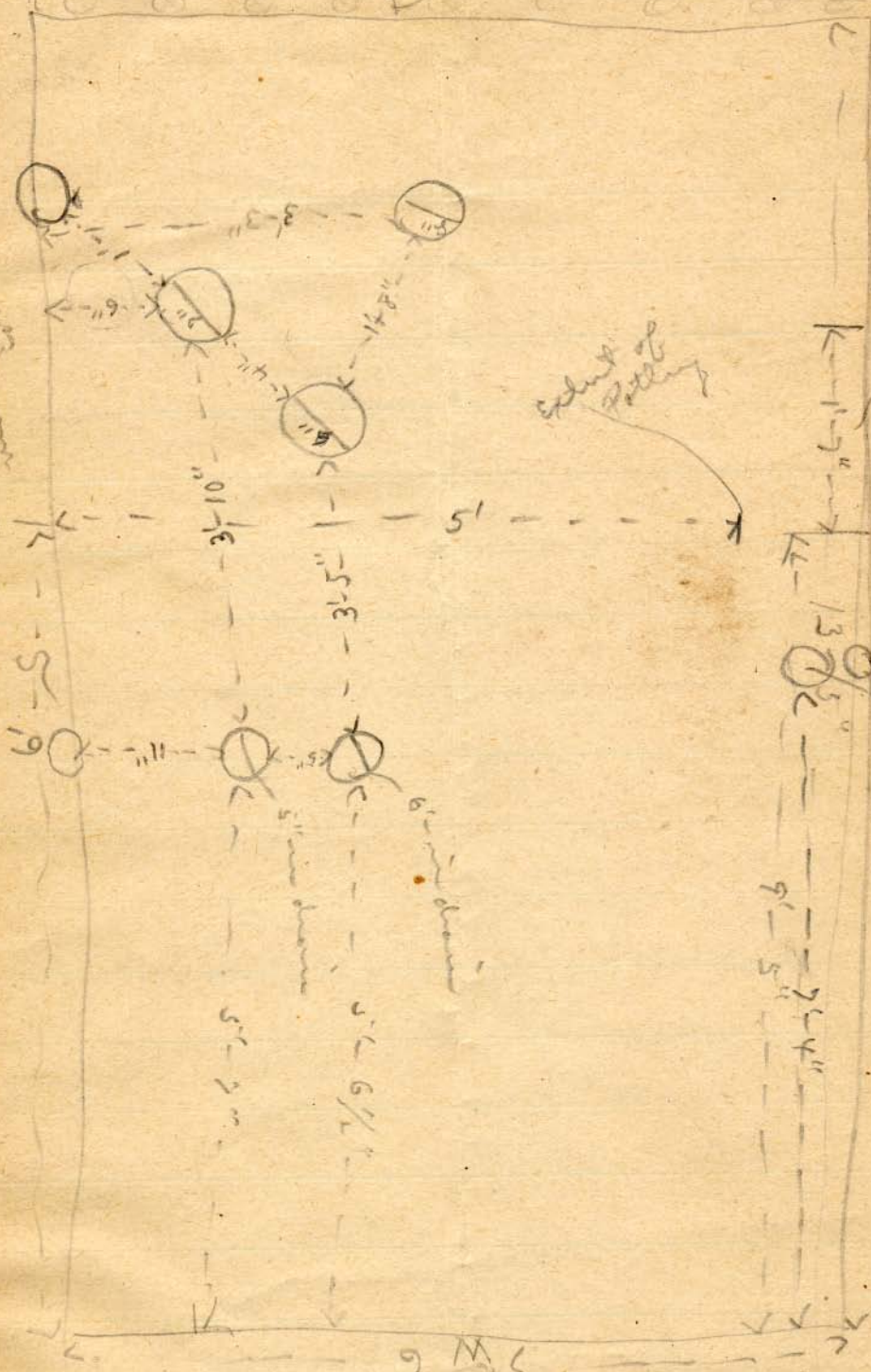
Handwritten notes in cursive script, including the label 'R-28A' and 'R-28'.

Plan of 1/2 of Room 216

P. to partitions between Rooms (W)

(9)

Point where partition ends



to Room
2'5" from end
of partition
Door 2'5" wide
N 12"
Part 6 1/2" in diameter
Part in the wall

Point where partition begins

9 M (E)

R-28.

Burial Mound
Number 2.

Skeleton #12-

" #13-[#]77-78+79

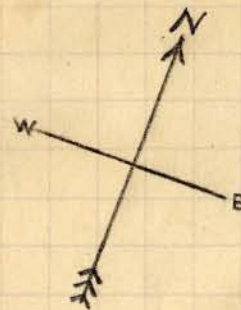
" #14-

" #15-

" #16-[#]85+86-91

" #17-[#]87

" #18-[#]88+89.



15

14

13

12

11

10

9

8

7

6

5

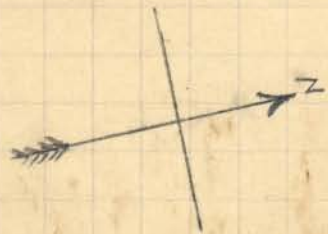
4

3

2

1

Part of R. W. a. Mound
exploration plan.
not carried out.



45

44

43

42

41

40

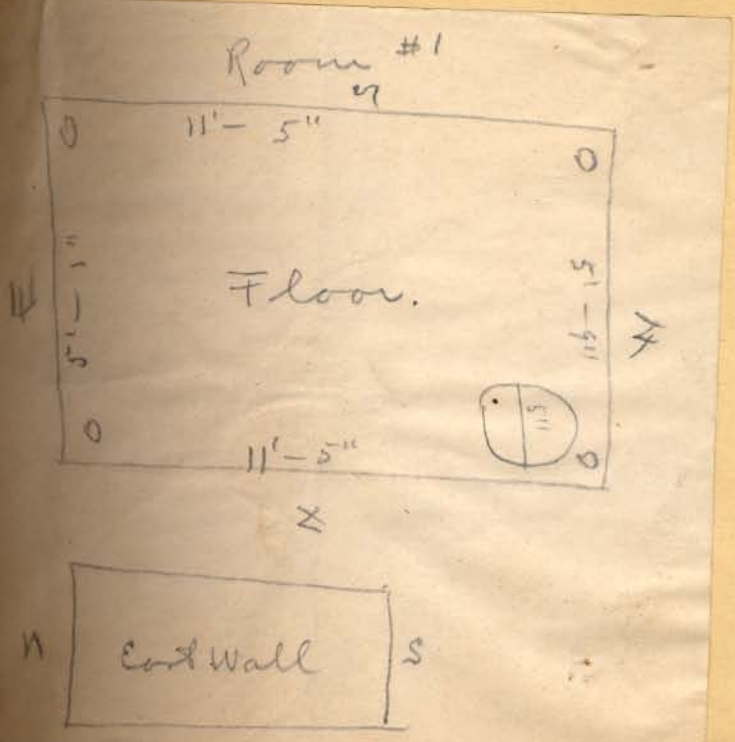
39

1#

E

W.

Public on Mesa
S. of Bonito & C. Kettle.



BONITO.

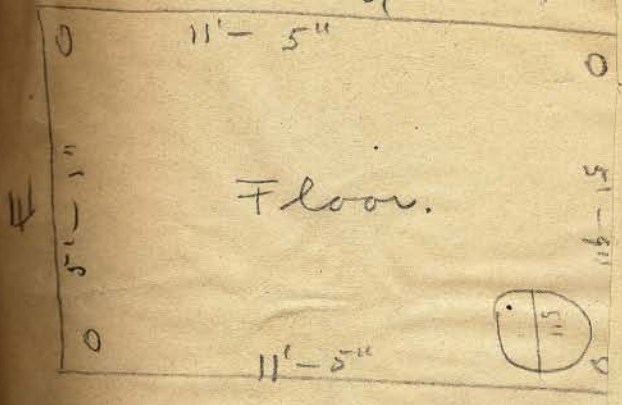
Pueblo on mesa
S. of Bonito, C. Keller.



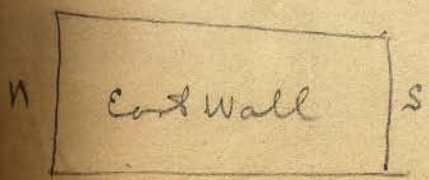
W. 175 N.
W. 175 N.
W. 175 N.

Fall
Wall
Wall
Wall

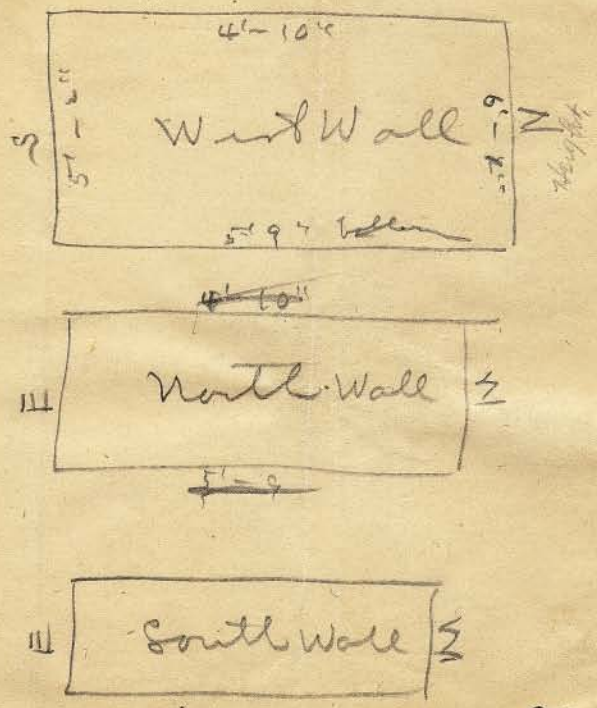
Room #1



Floor.



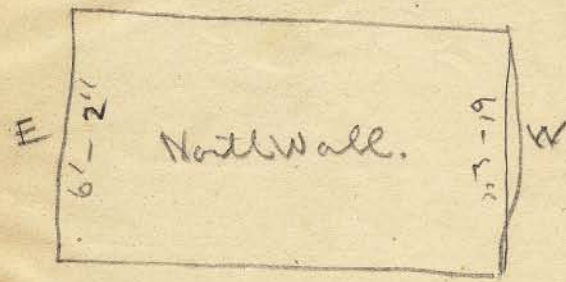
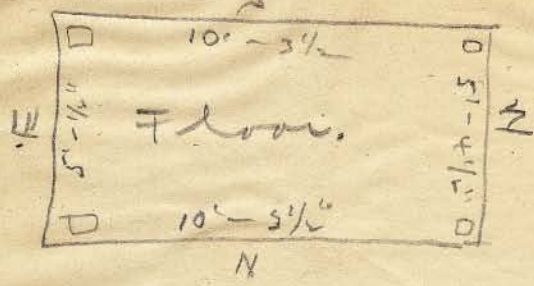
Room #1



BONITO

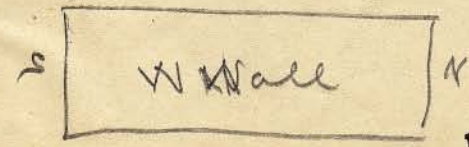
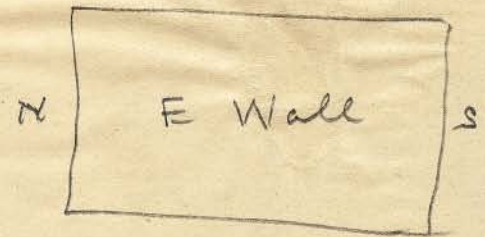
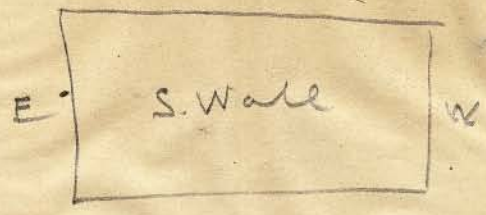
BONITO.

Room #2



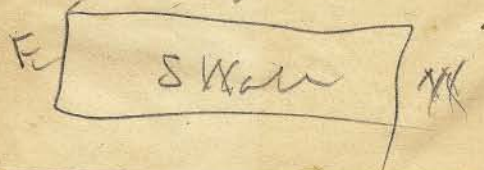
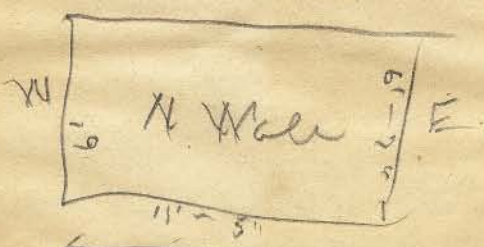
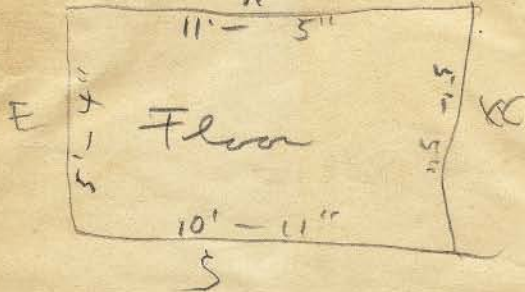
BONITO.

Room #2.



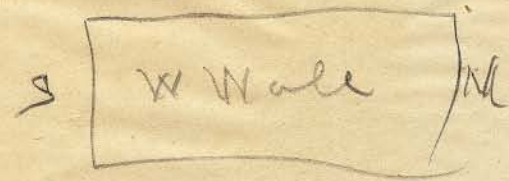
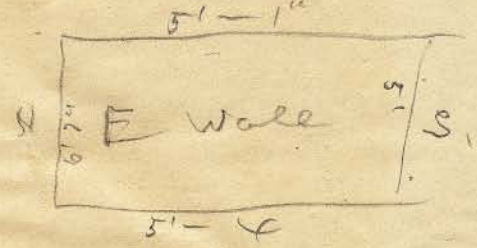
BONITO.

Room #4



BONITO

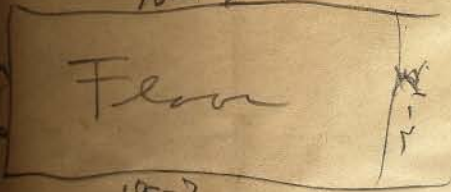
Room #4



BONITO

Room # 5 under # 4

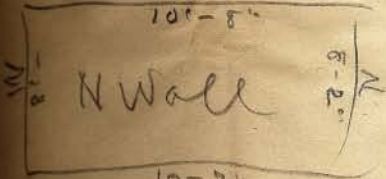
10-9



10-7

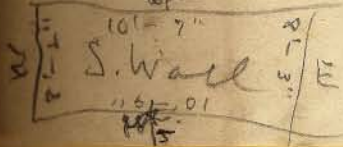
10-8

10-8



10-7

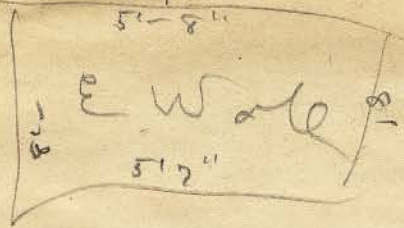
10-7



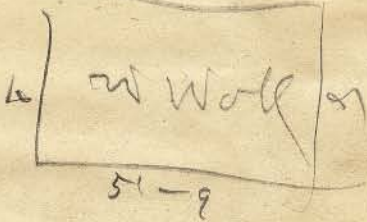
BONITO.

10

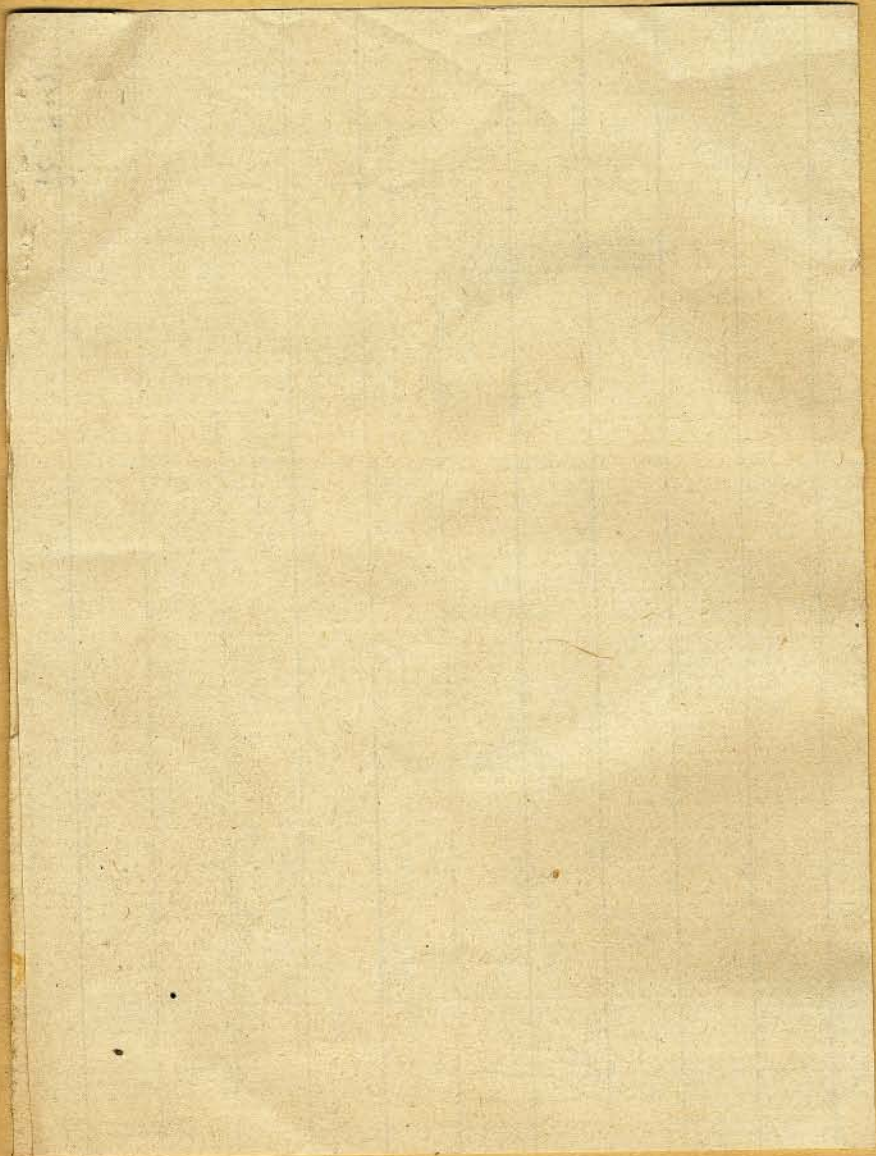
5-8

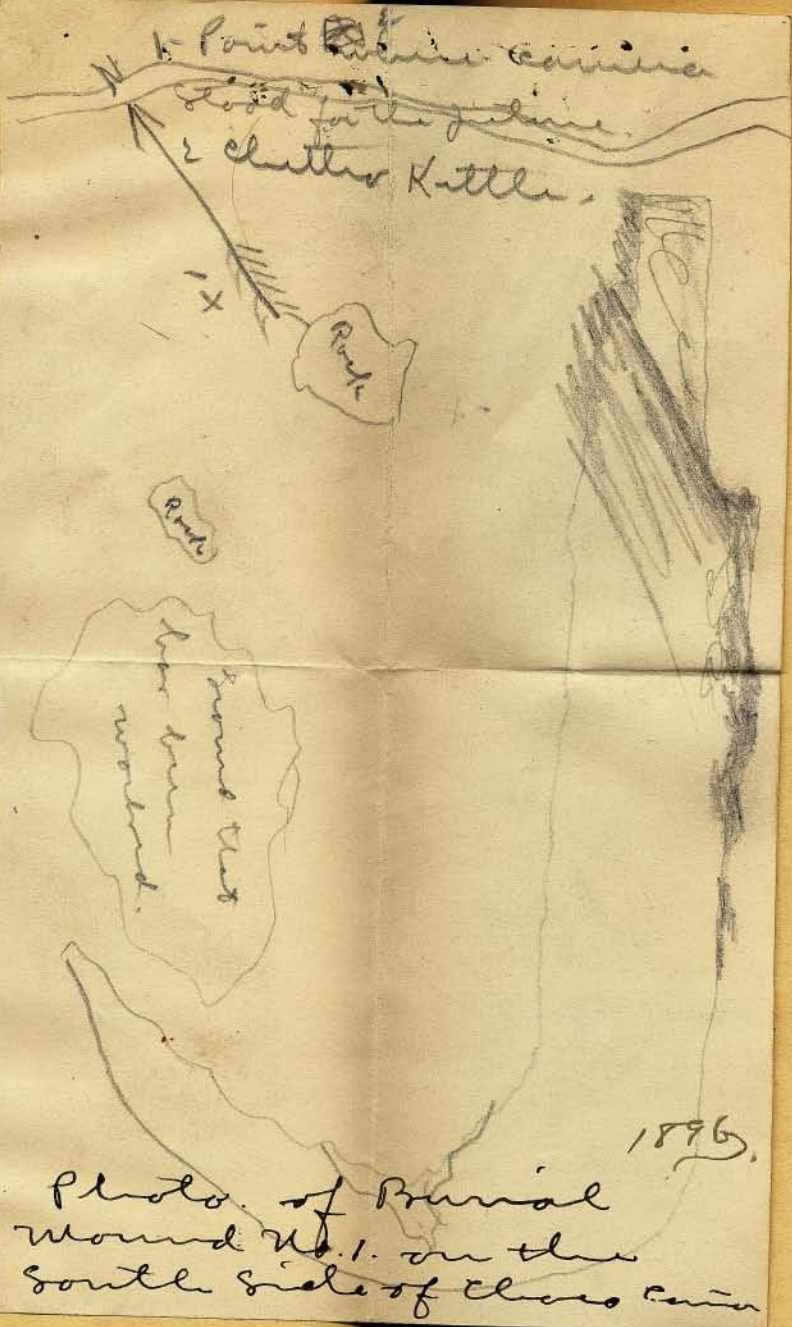


5-9



BONITO.





1896.
Photo. of Burial
Mound No. 1. on the
south side of Chaco River

Number 36 to 44 inclusive were found in a sloping mound, while prospecting - the mound is situated at the base of the mesa and near a mound on which there is a fallen ruin. It is on the ~~southern~~ Southern side of the Cañon and lies in a South ~~Westerly~~ ^{direction} from Clutha Kettle.

Three holes were dug - the first being about one foot deep and containing one skeleton - the second reached a depth of two feet and only one body was found - the third, in a space four feet in diameter contained the bodies, or at least portions of three skeletons the bones of one protruding ~~of~~ above the

surface - The first skeleton
was that of an old man,
- and near the head were
found numbers 36 & 37. the
body was lying with the
head toward the north east
and was somewhat extended
the bones were too much de-
cayed to be of any use.

The second furon was an adult
and was relatively the same
as the first but the body was
more drawn up. it was about
twenty feet N.W. of the first one.

~~Two plates taken of separate specimens~~
Specimens numbered 38 to 43
inclusive were found with
it # 38 was found about half a
foot above the body. # 39 was
lying in a horizontal position
just over and beyond the
skull. near the frontal bone.

#40 was found just west of the skull and almost against it - #41 was only 1" below the surface but was almost over the cranium #42 was found under #39 - #43 was in position or as near as we could tell.

Skeleton number three was forty above ground a little further to the N.E and with it were found the beads and turquoise ornament #44 they were scattered in the sand about the base of the skull.

This skeleton was in section 12 and was lying north & south - head toward the south - body extended - just inside of section the body almost following the Northern line. The head just inside of the Eastern line.

1896

~~1896~~