

COLLECTION:

Hyde Exploring Expedition at the American Museum of Natural History

**CDI
ACCESSION
NUMBER:**

000156

ERRATA:**COMMENTS:**

Scans of bound notebook. Contains predominantly Pueblo Bonito room measurements and drawings.

CITATION:

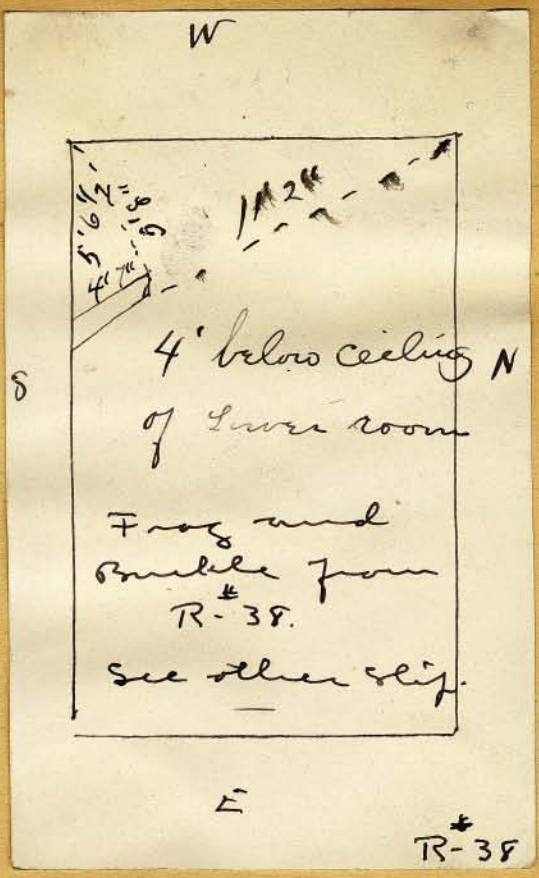
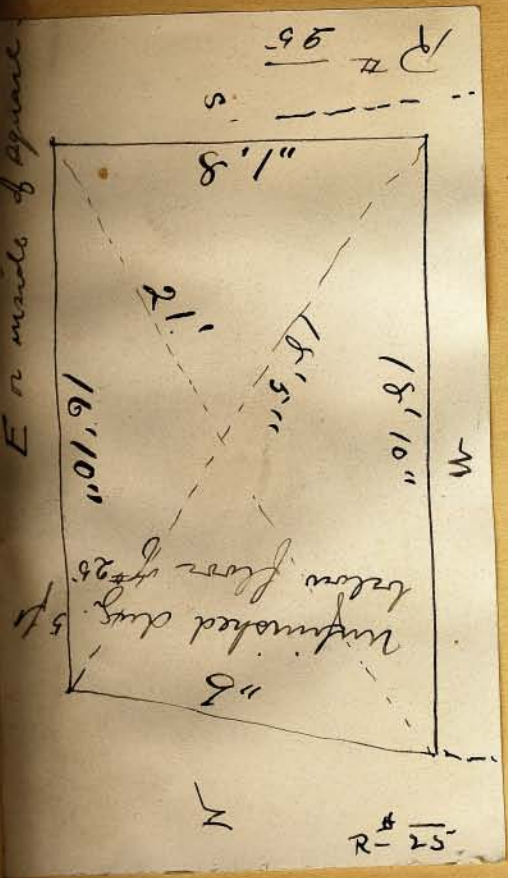
Pepper, George
n.d. Pueblo Bonito, Wetherill R., Pepper, G., 2/Folder 2. In Hyde Exploring Expedition,
American Museum of Natural History, New York City.



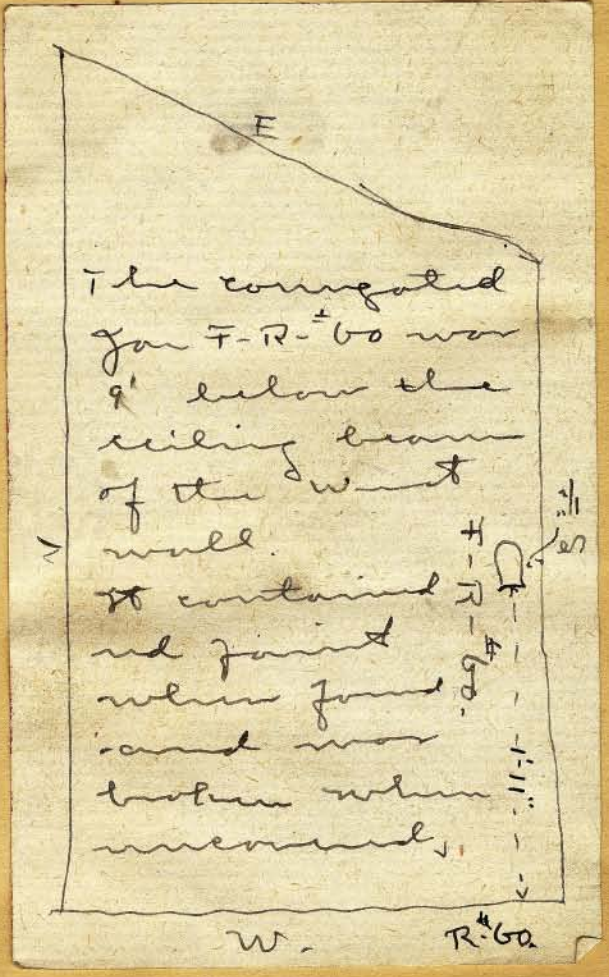
PUEBLO BONITO

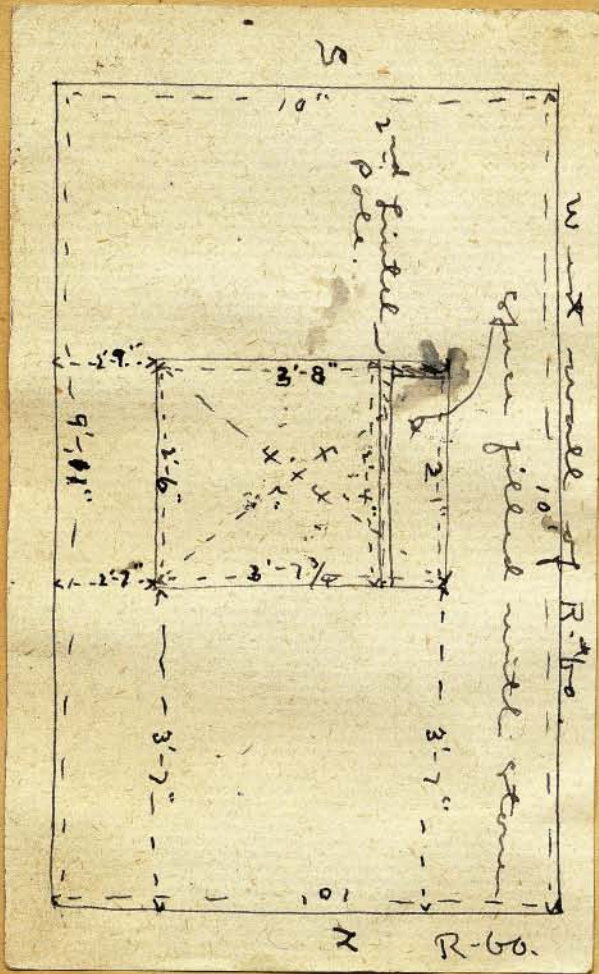
Wetherill, R.
Pepper, G.

E or inside of square



The get Frog and get Buckle sold to the H. E. E. by F. T. Amiot were bought by him from Antonio the man who worked in R-438 in 1897. Antonio acknowledged that he forgot found the pieces and showed the position of same for measurement 1898.





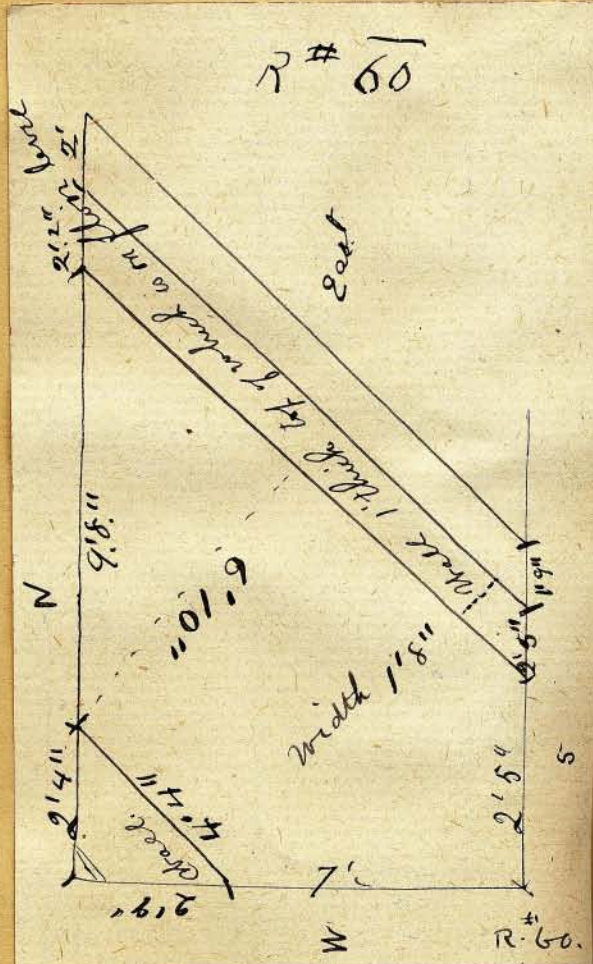
R-60-^{#3}

Wall runs parallel with E wall - top on level with floor - 1" deep. parallel wall in N.W. corner same depth

E wall 1'-6" thick
 S " 1'-6" 2'-6"
 S " 1'-7 1/2"
 N " 2' "

Room #60

N. wall plastered and bulged at E of doorway. doorway \square type closed with found stone plastered. side plastered - doorway only broke in wall primed area shown at W part of wall. East wall will plastered closed door -



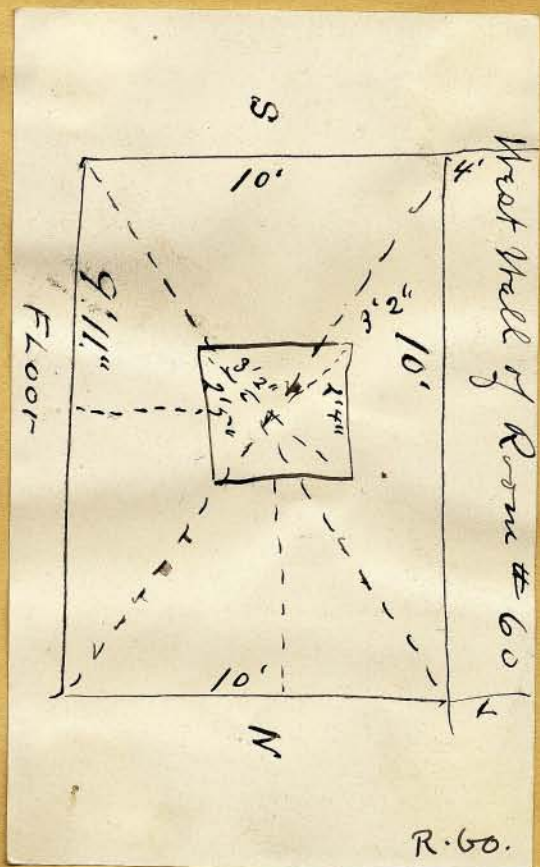
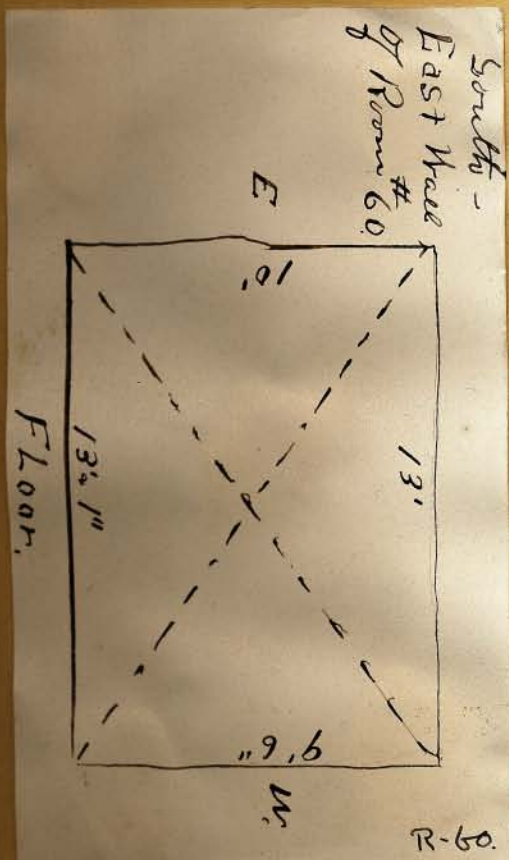
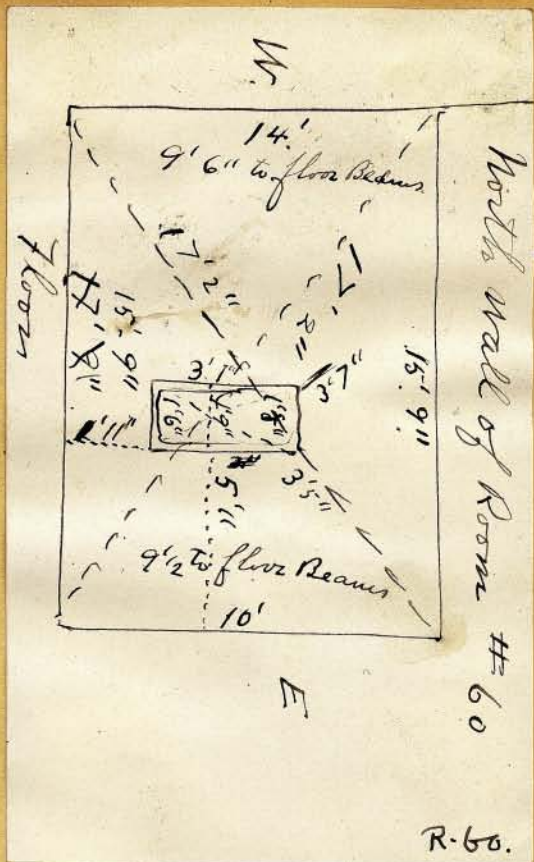
R. 60 #2.

ray in upper S.W
joint. \square type
beam hole near
N.E end 6" below
top of wall.

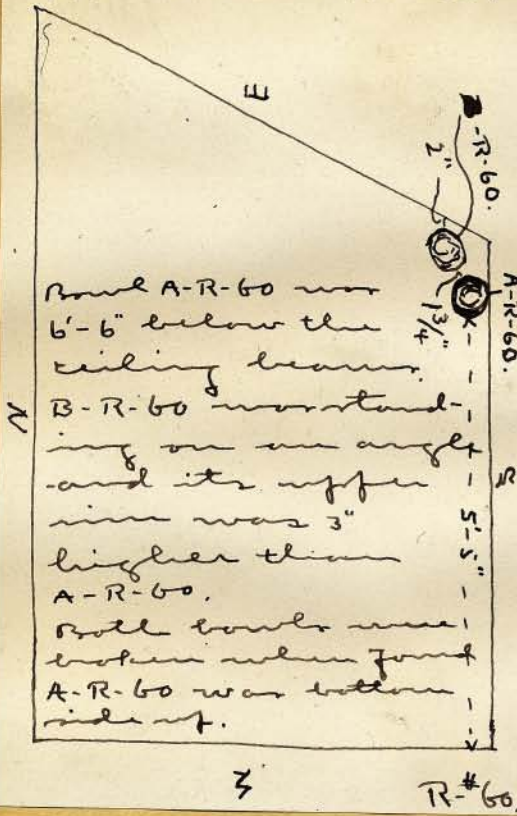
S. wall
plastered in-
face unbroken
somewhat bul-
ged

W. Wall.

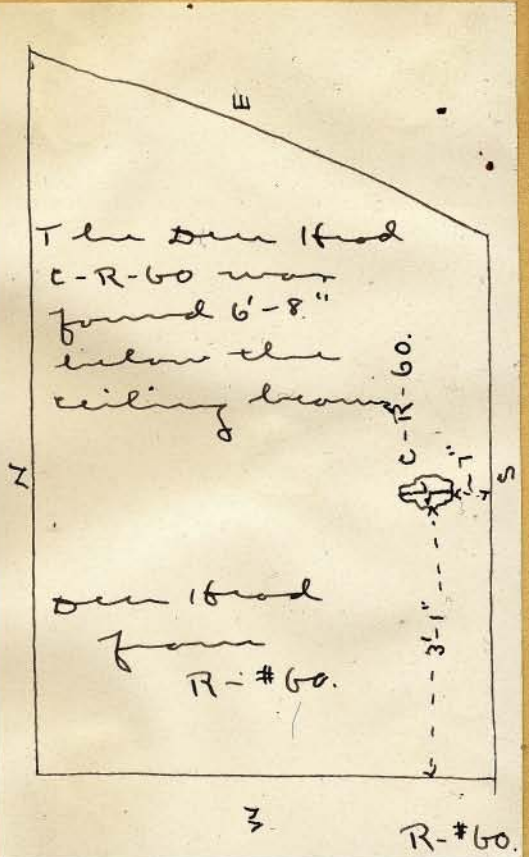
Large stone
chimney - door -
way \square type -
wall about N. & S.
wall.



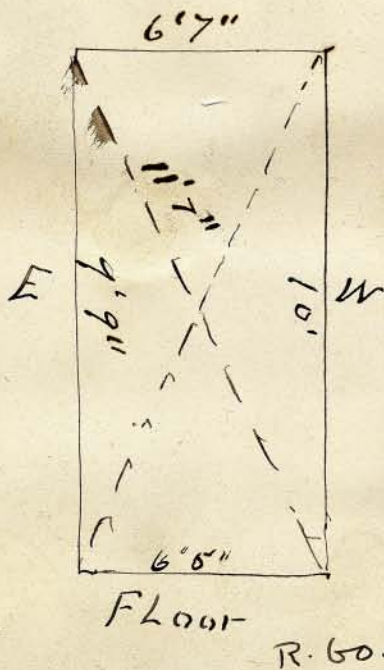
Bowls in R-#60.



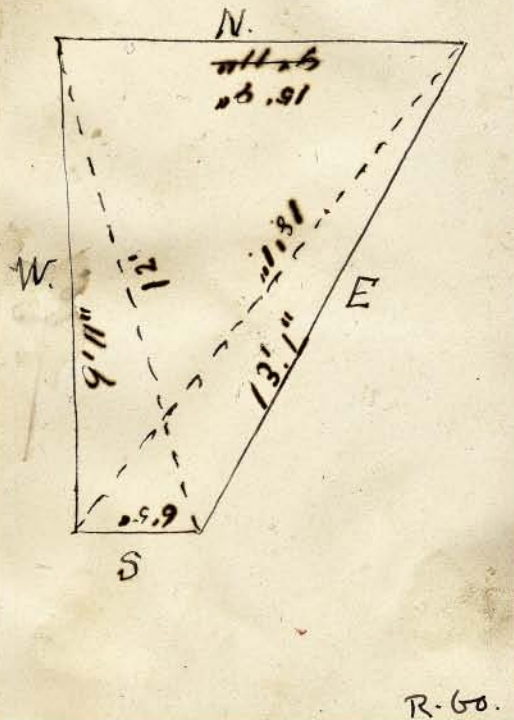
The Deer Head
 C-R-60 was
 found 6'-8"
 below the
 ceiling beam.



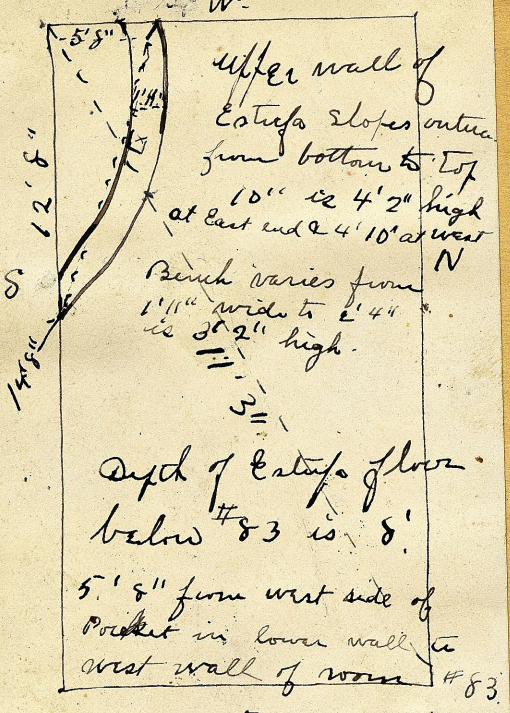
South Wall Room #60



Floor of Room #60.



R# 83 Floor 20' below surface



Upper wall of Cistern slopes outwards from bottom to top 10" is 4'2" high at East end & 4'10" at West N

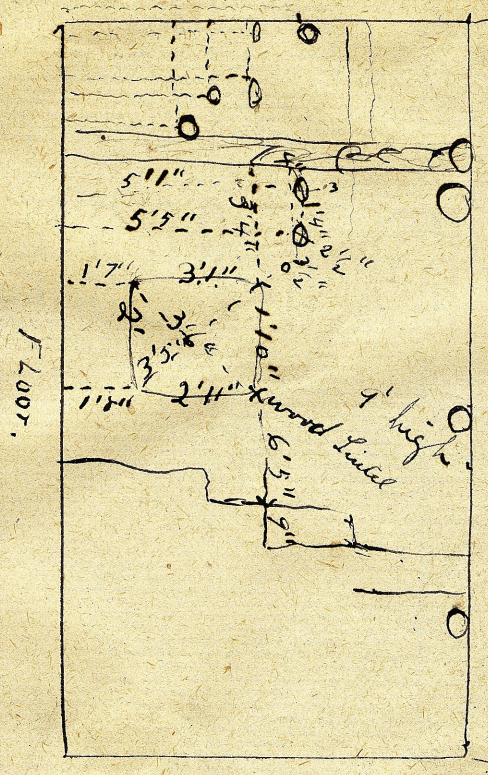
Bench varies from 1'11" wide to 2'4" is 3'2" high.

Depth of Cistern floor below #83 is 8'

5'8" from west side of Pocket in lower wall to west wall of room #83

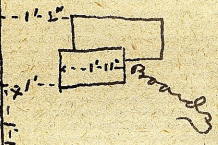
FLOOR PLAN R-83

R-83 South Wall



R-#83

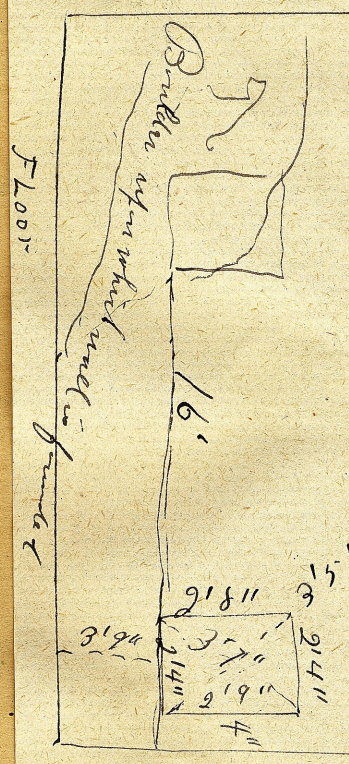
X shows the position of the mudded bowl from R-105. Same level as boards. Boards 1'-5" below ceiling beam.



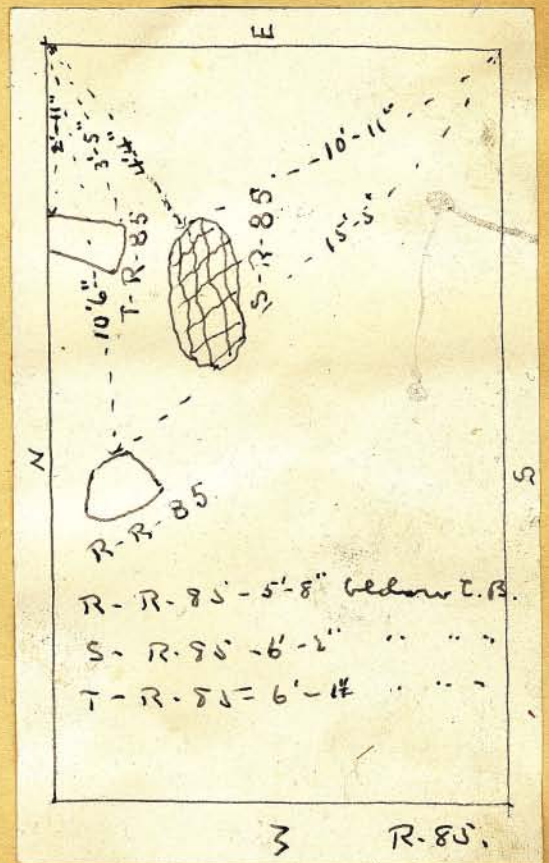
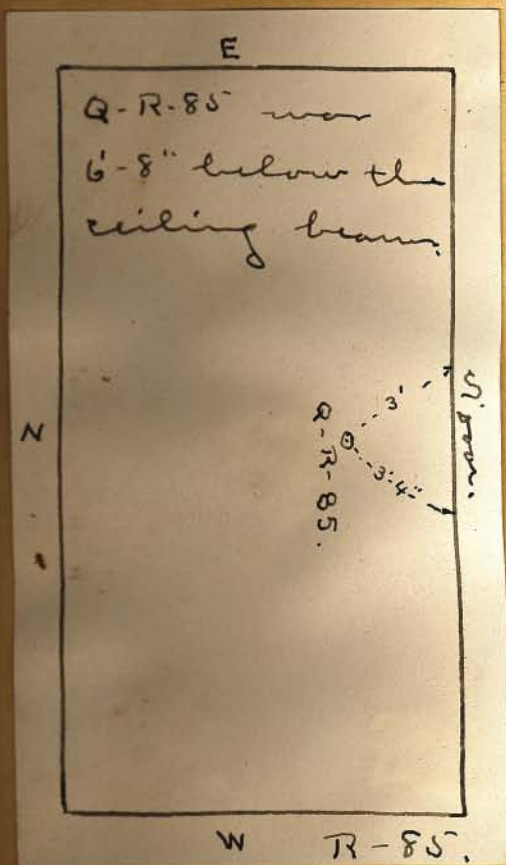
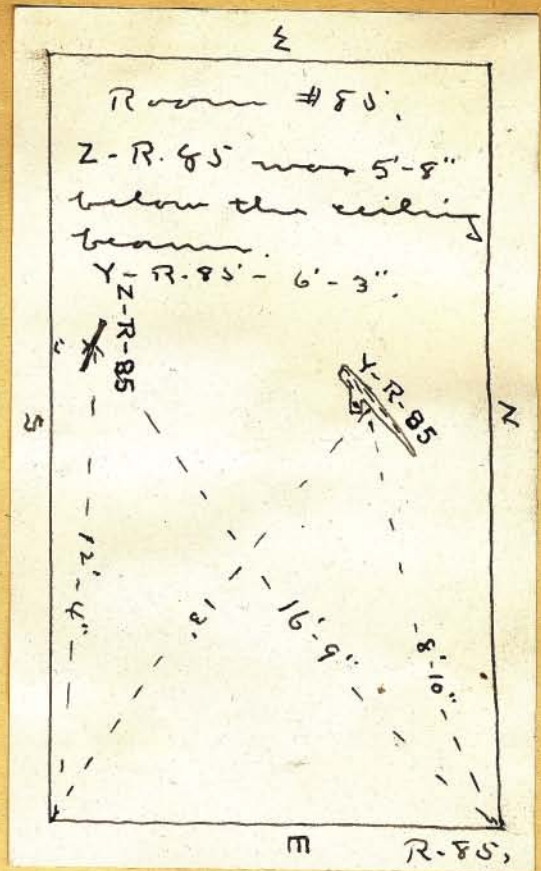
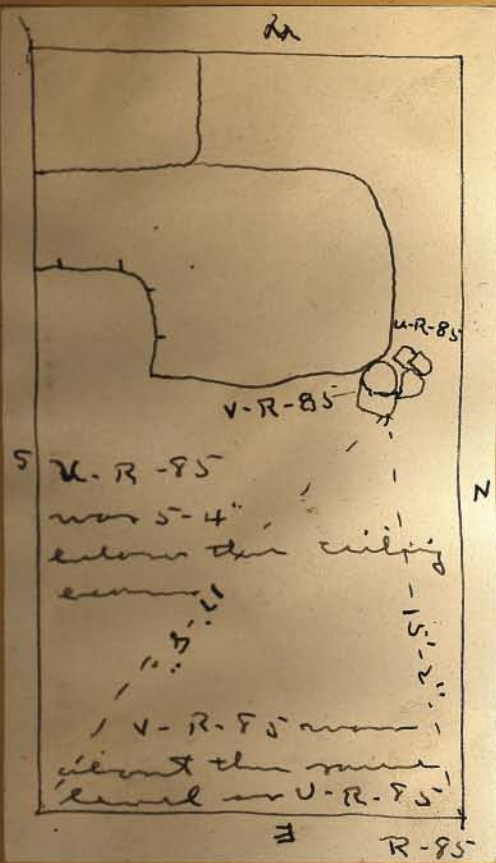
These boards are the rotten one joined in the cut with the large board from R-#85.

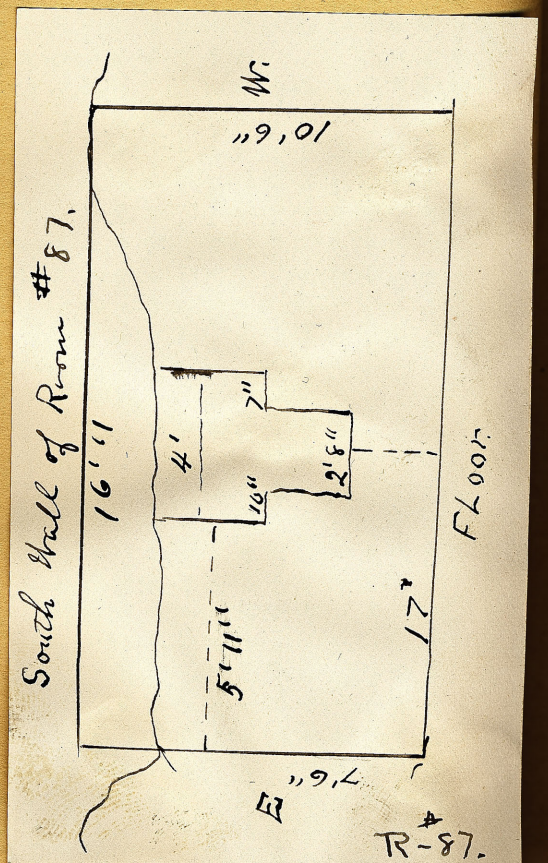
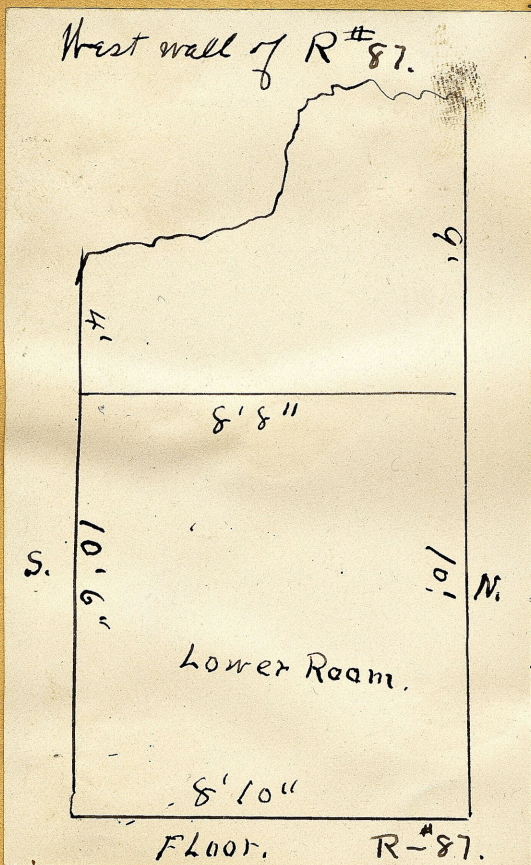
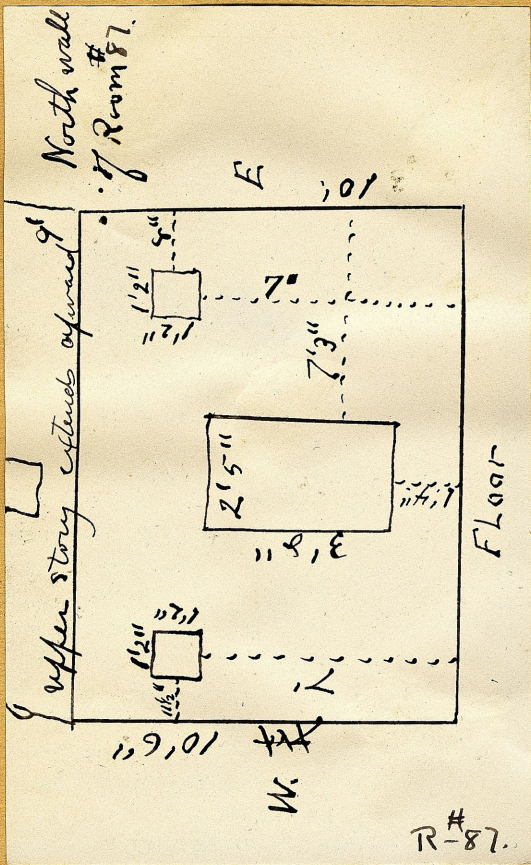
R-105 R-85

Wall continues higher - North wall of Room #83

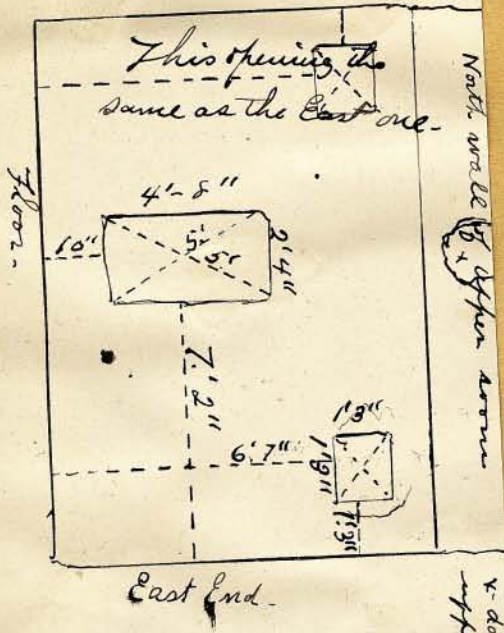


R-#85



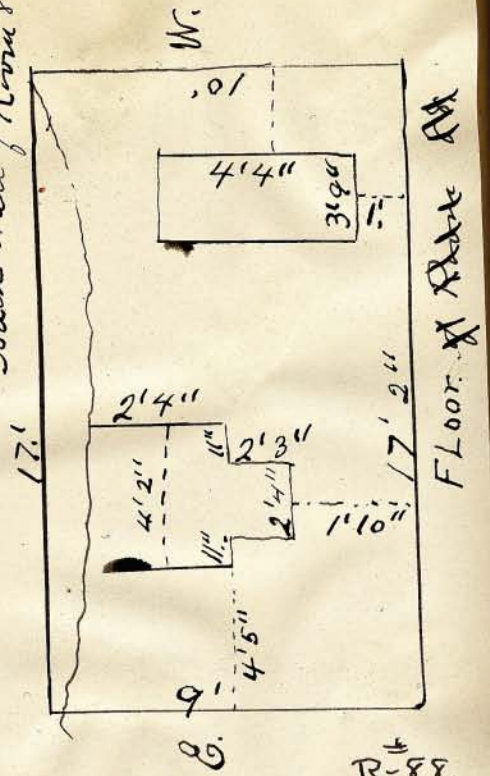


North wall of Lower R. # 88
 Height of Room 9'8"
 Standing wall 18'

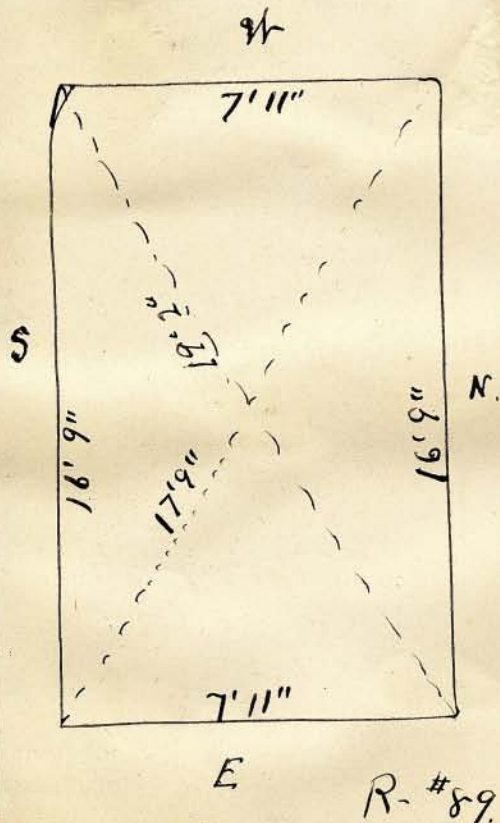


R-88
 N. door in upper part

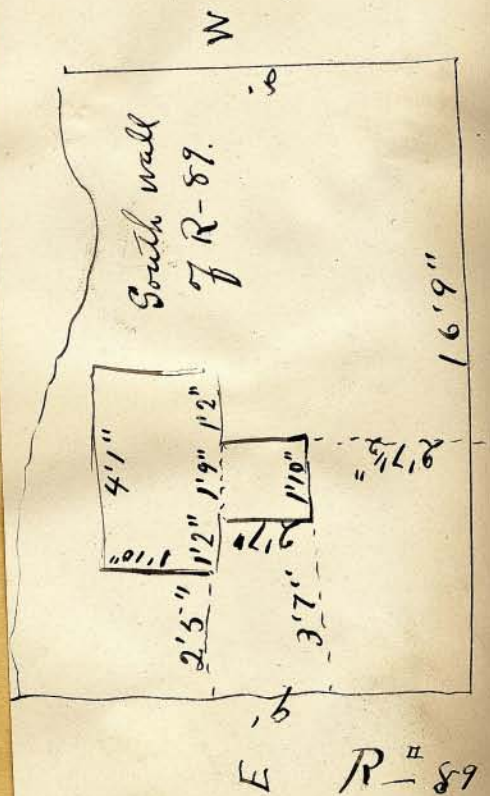
South wall of Room 88



R-88



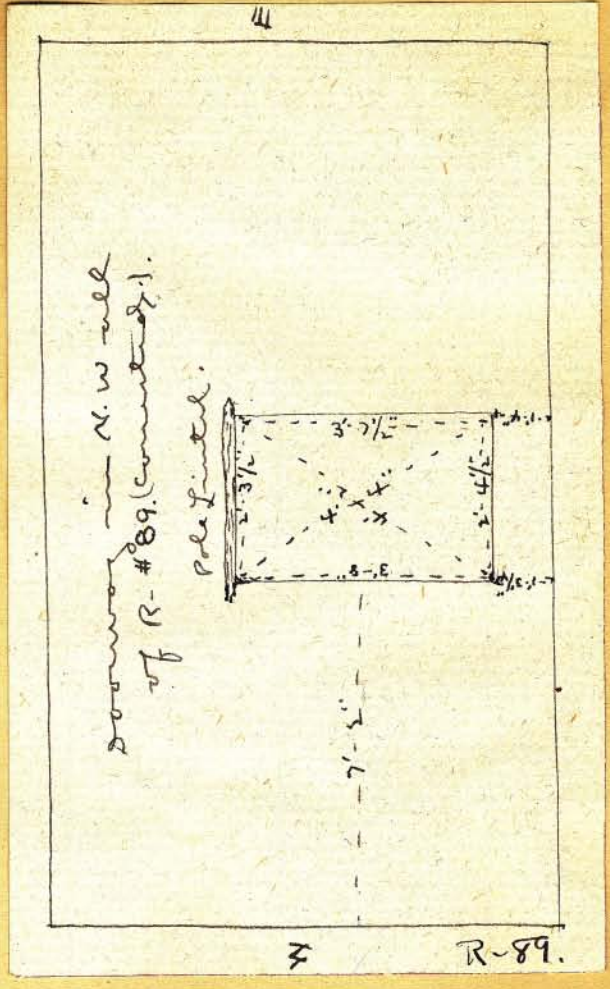
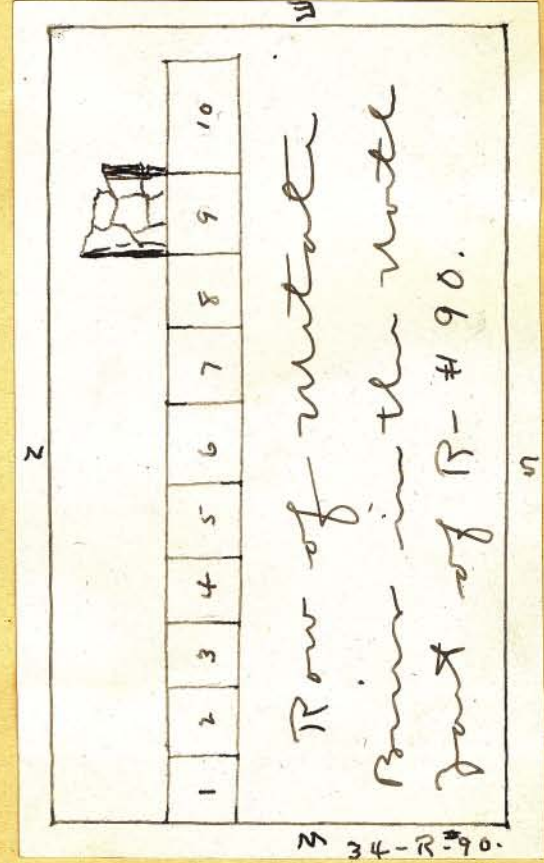
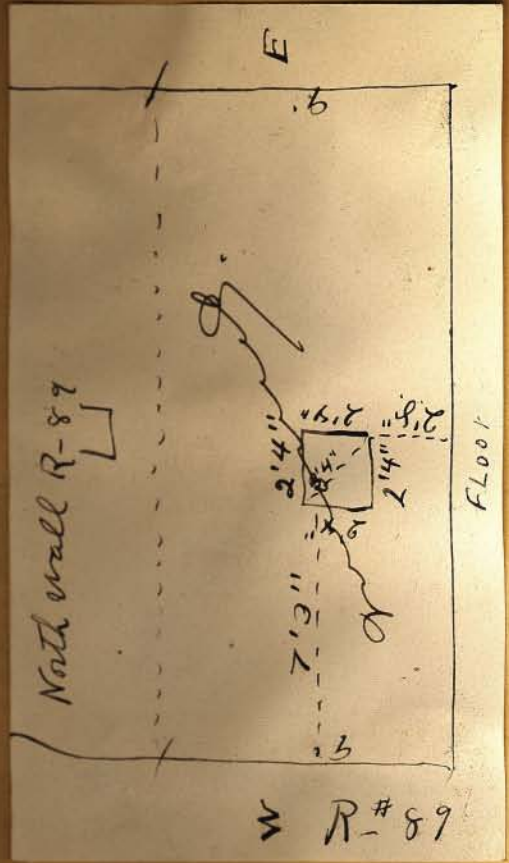
R-#89



R-#89

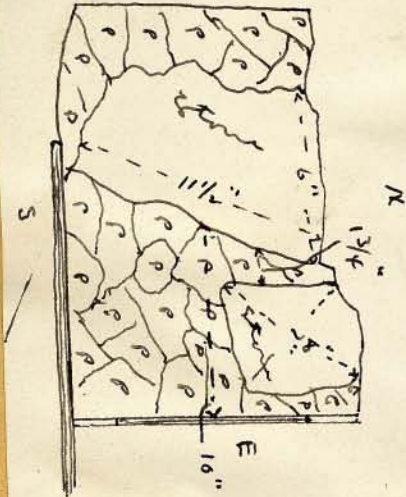
all of the measurements of the metal line were taken from the inner plaster limit. The corner measurements were from the center of the rounded portion.

35-R-96.



Pin #1 - R-90.

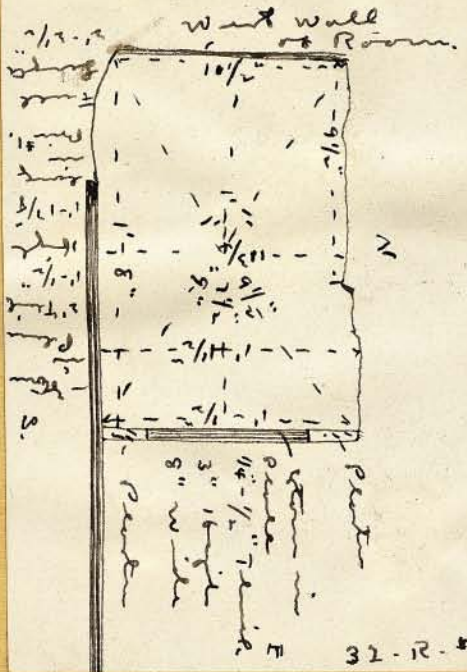
Σ



31-R-90.

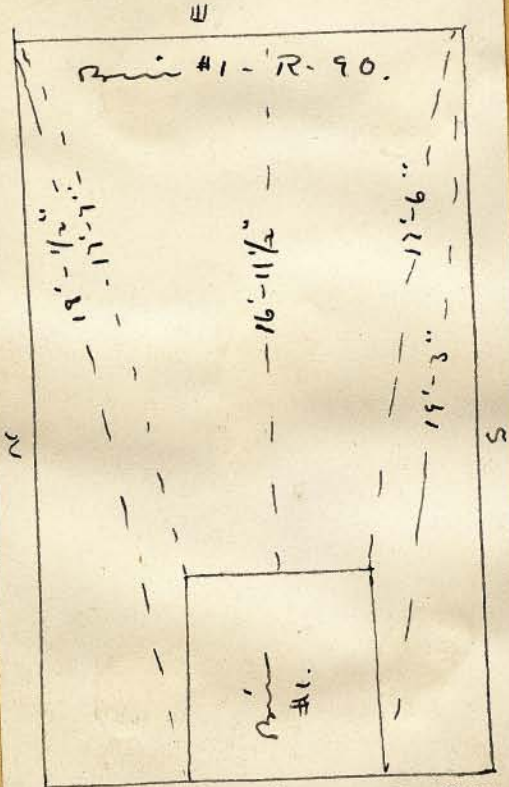
Pin #1 - R-90.

Σ



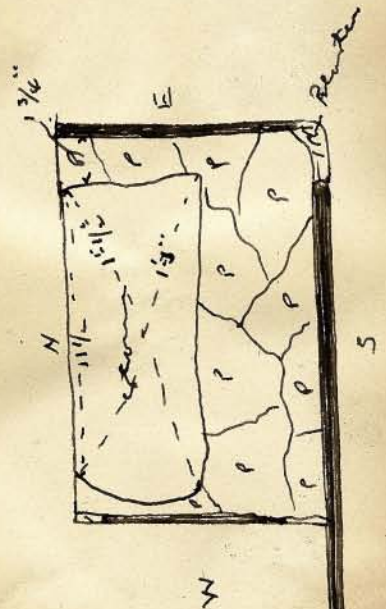
32-R-90.

Pin #1 - R-90.

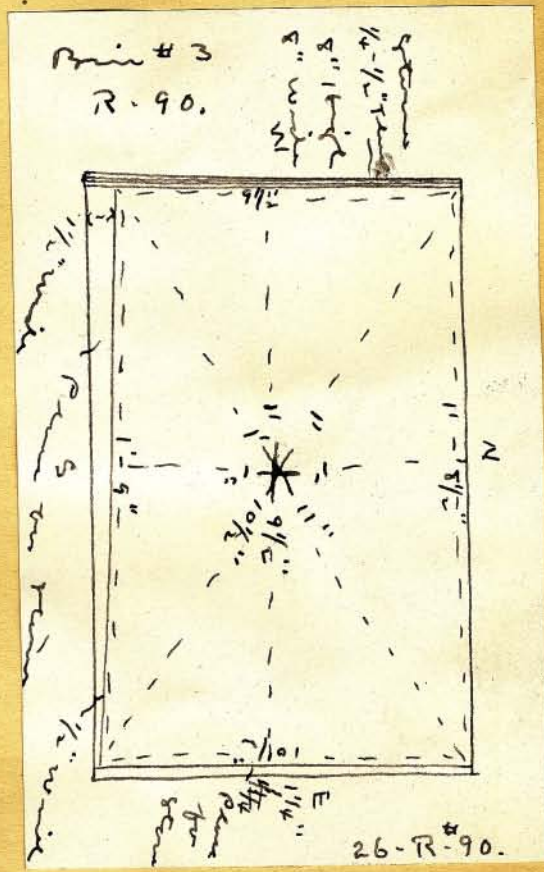
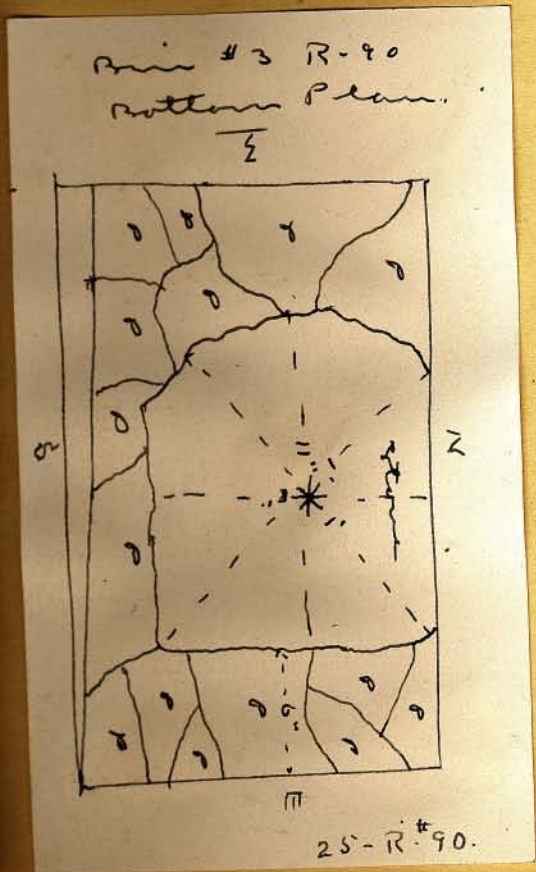
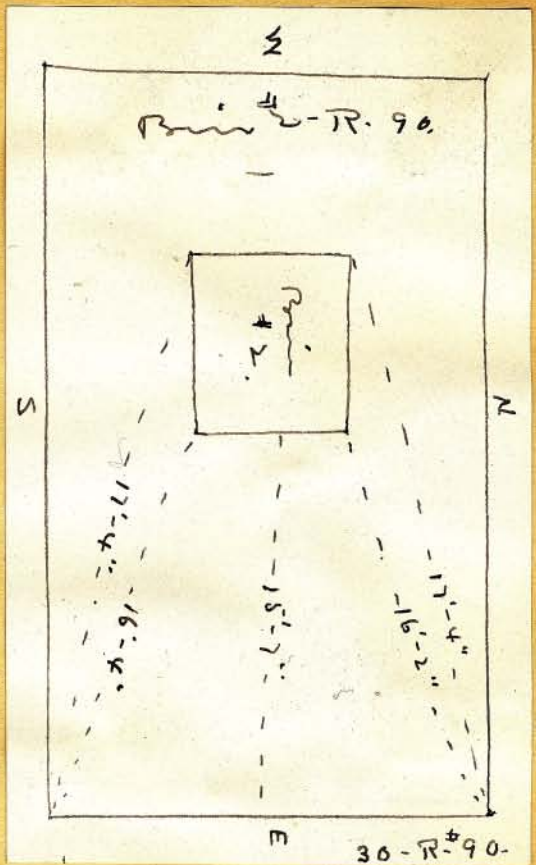
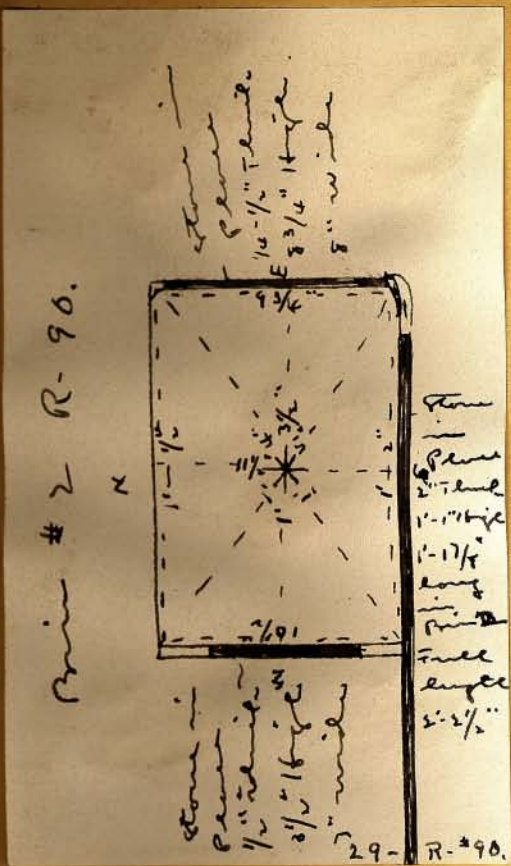


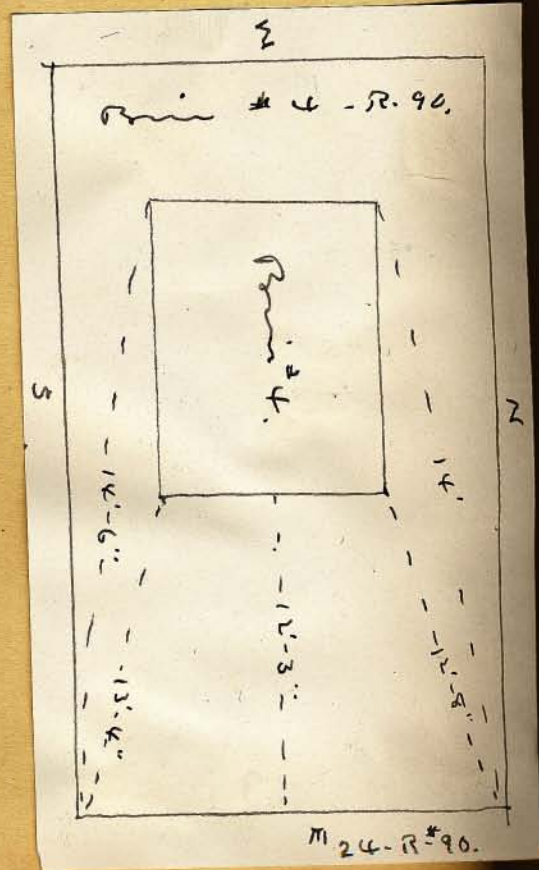
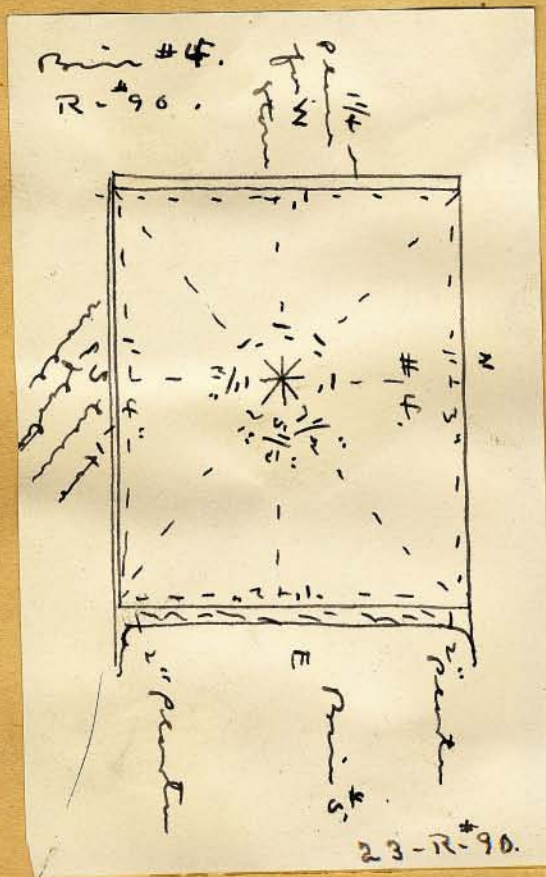
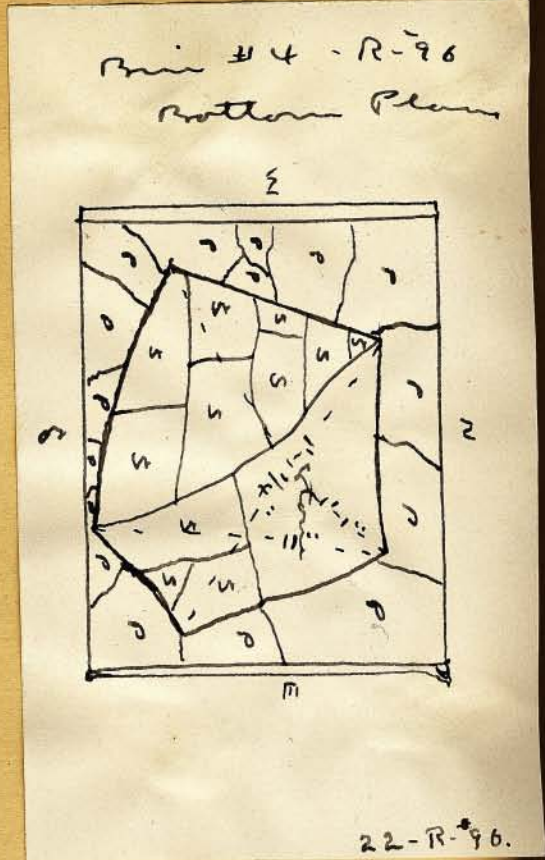
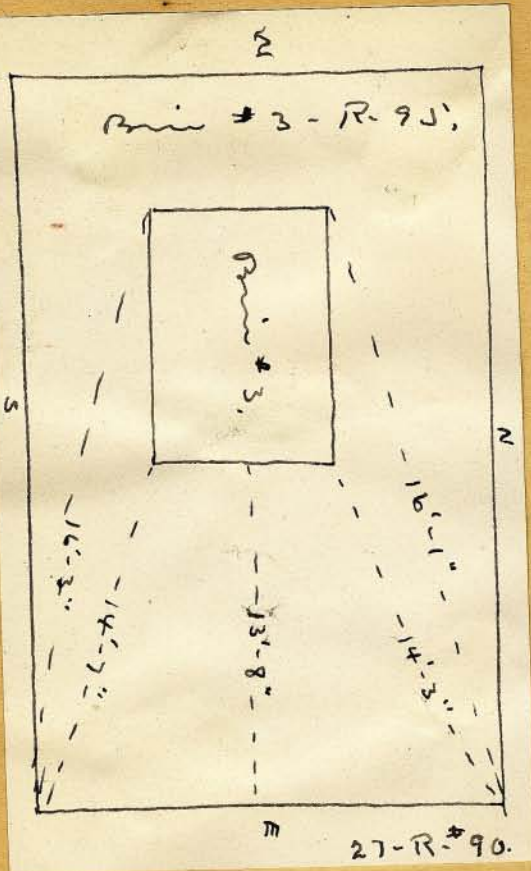
33-R-90

Pin #2 R-90:



28-R-90.

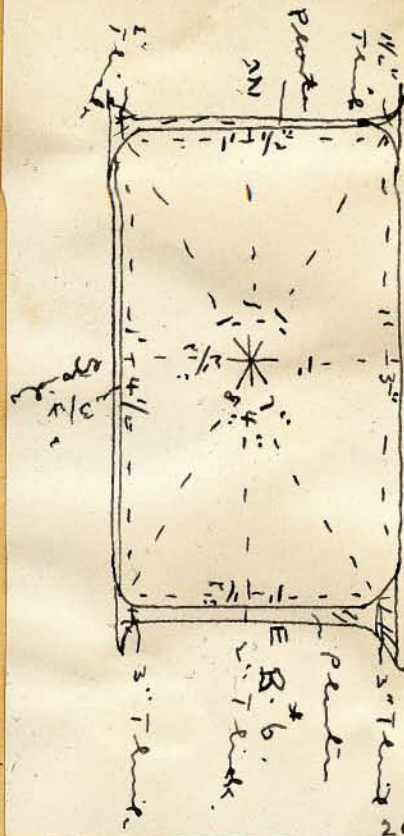




Bin #5 - R-90.
Bottom Plan.



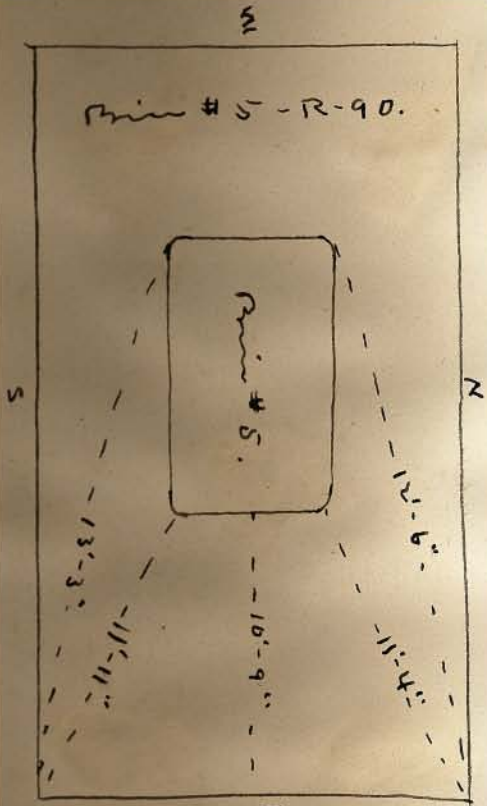
19-R-90.



Bin #5 - R-90.

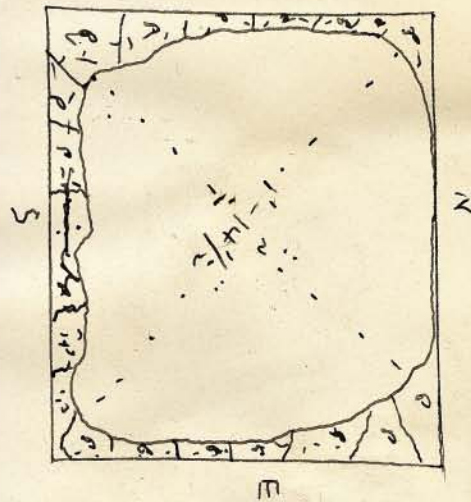
20-R-90.

Bin #5 - R-90.

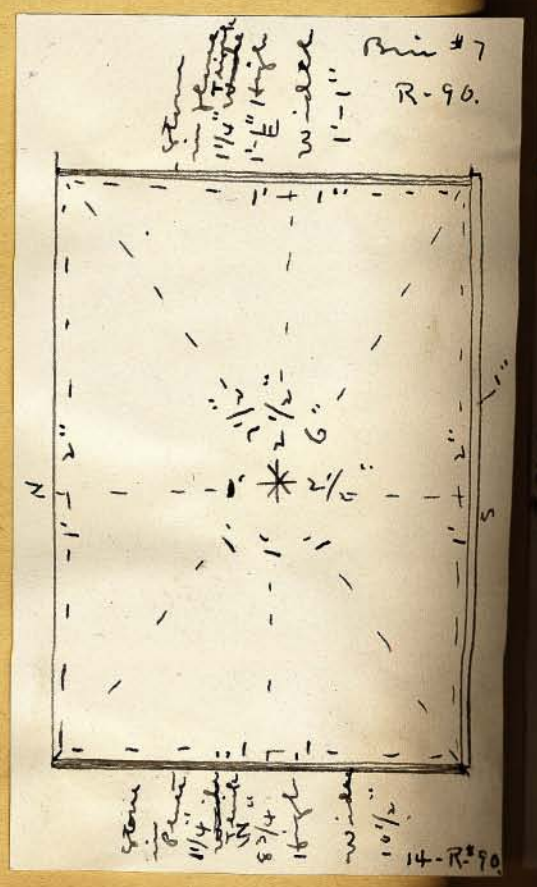
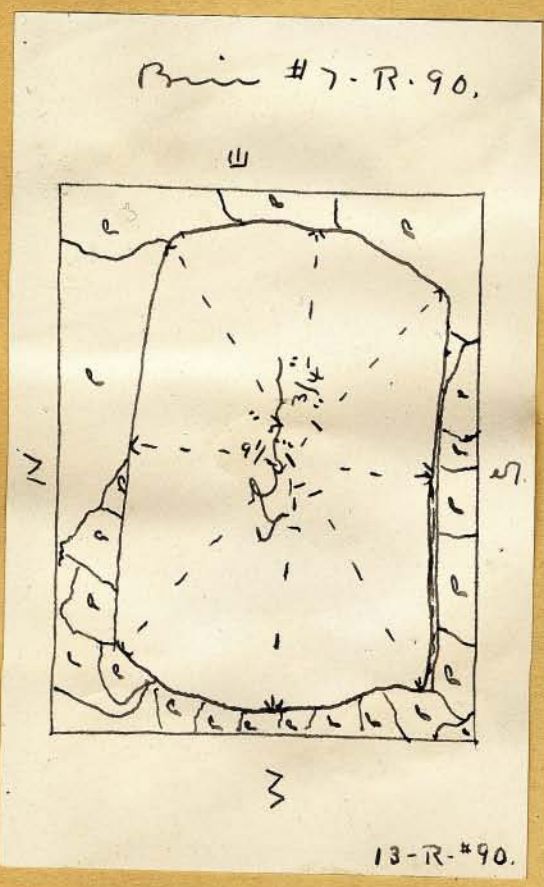
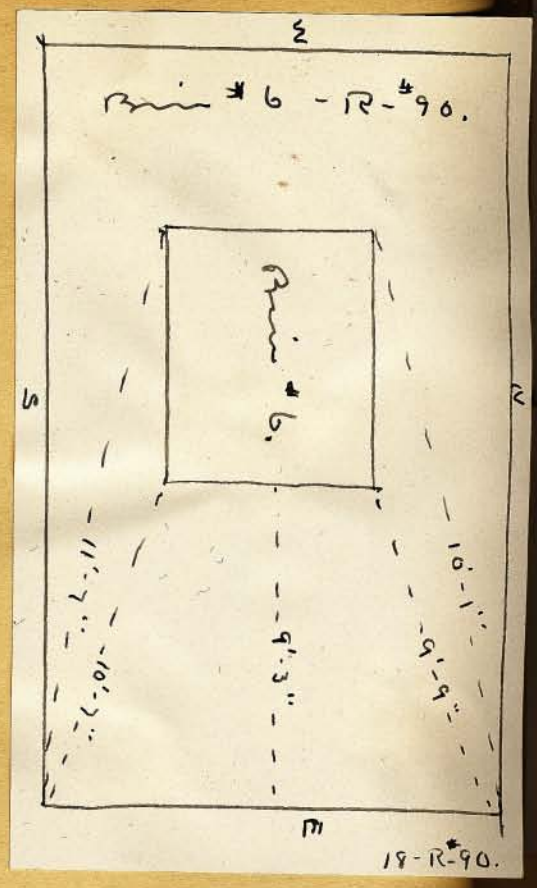
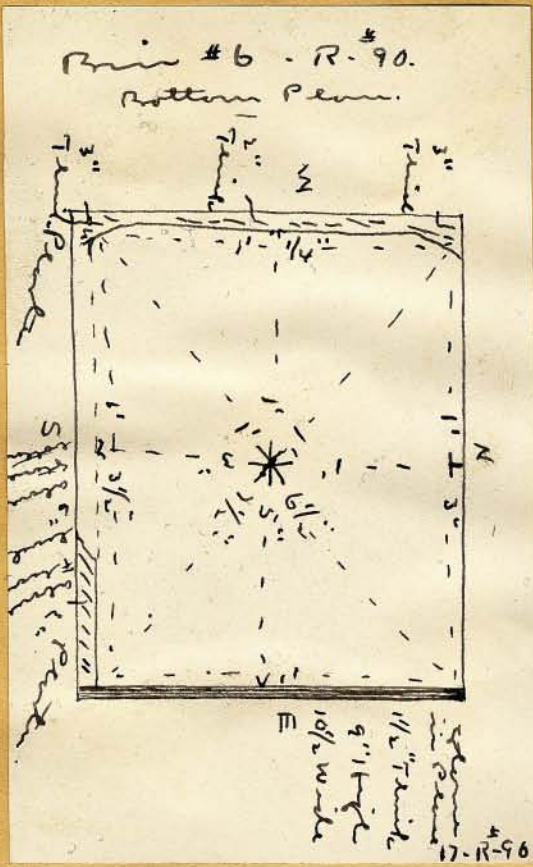


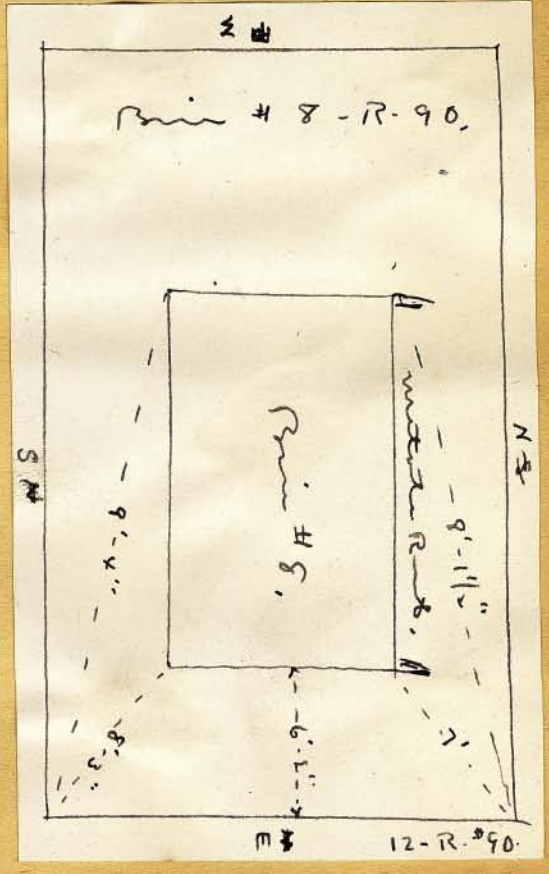
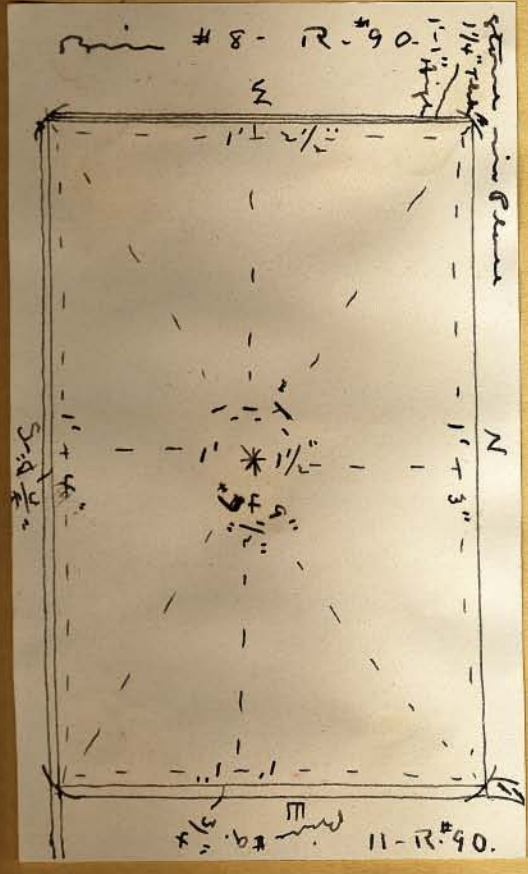
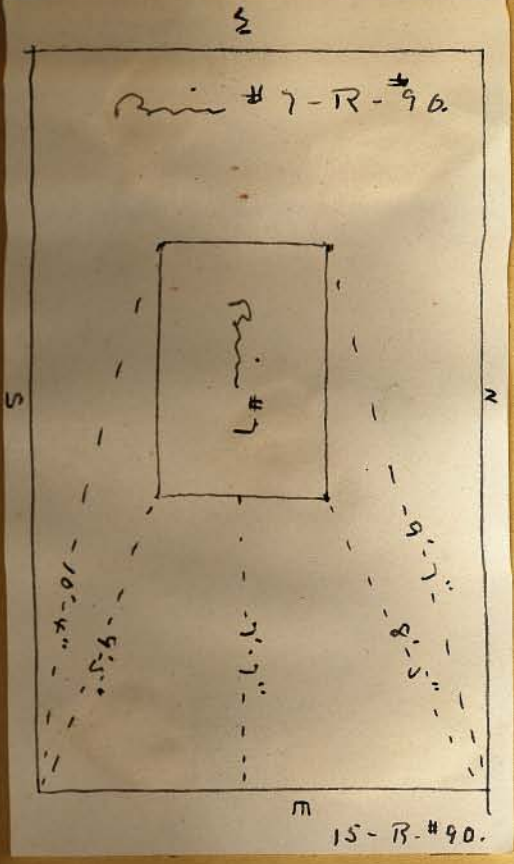
21-R-90.

Bin #6 - R-90.
Bottom Plan.

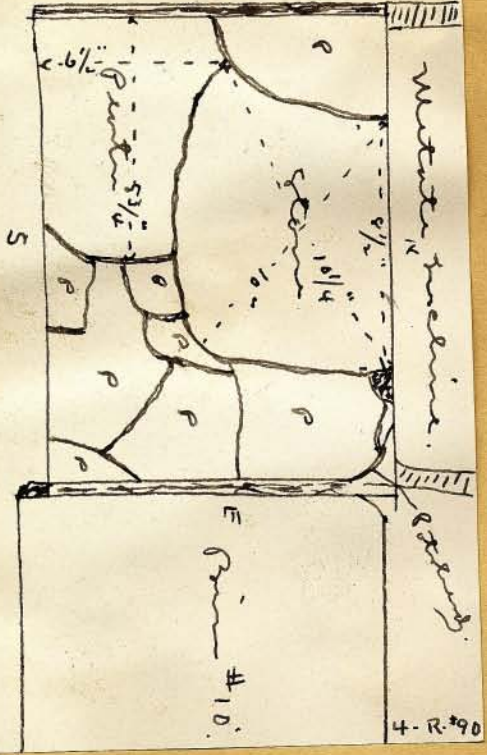


16-R-90.

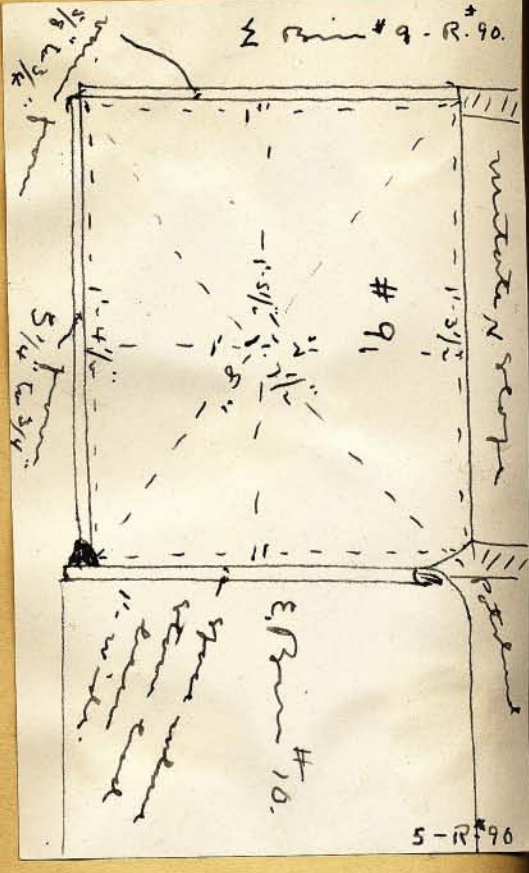




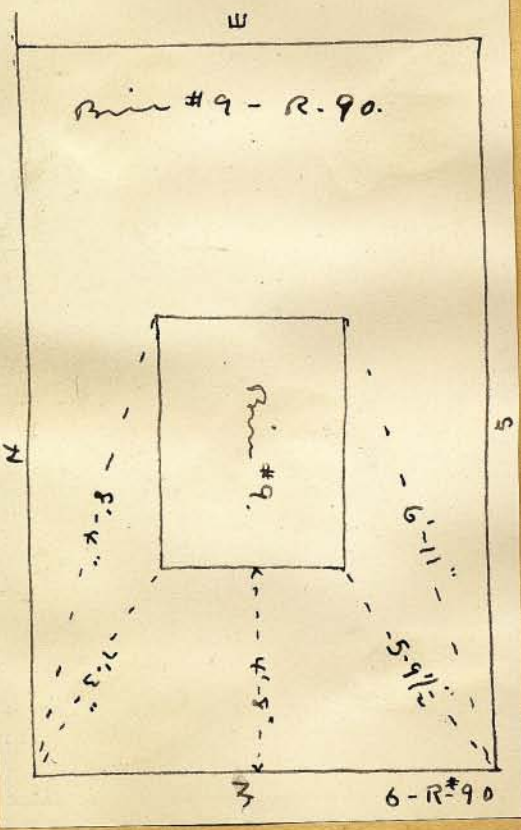
Pin #9 - R-90.



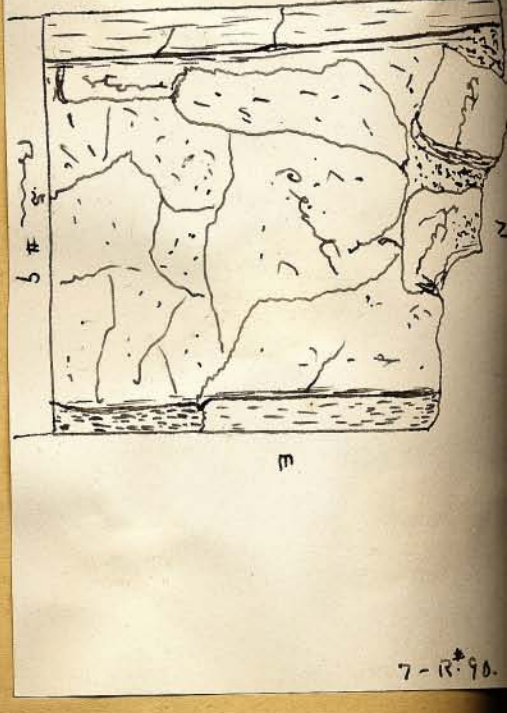
Pin #9 - R-90.

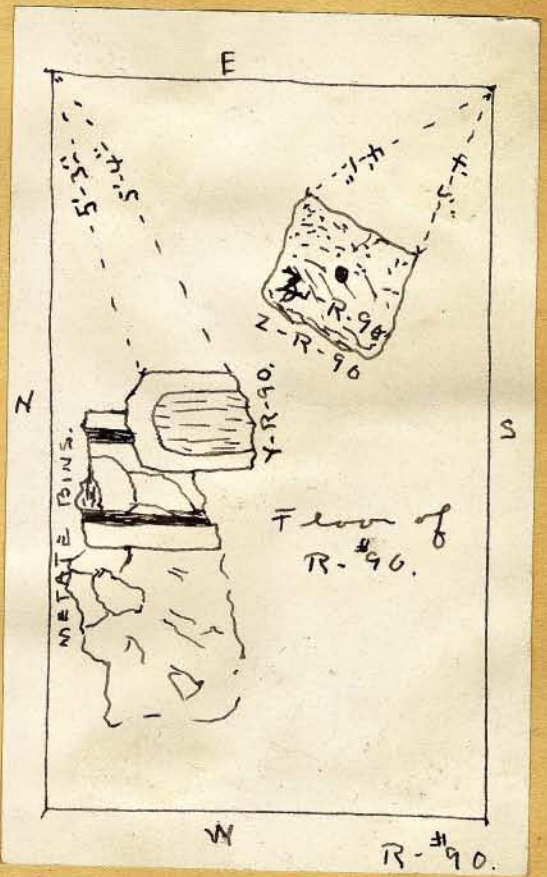
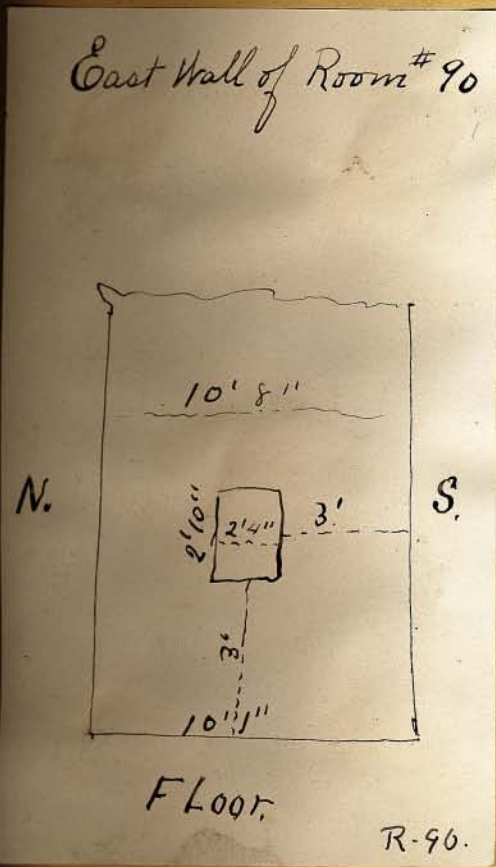
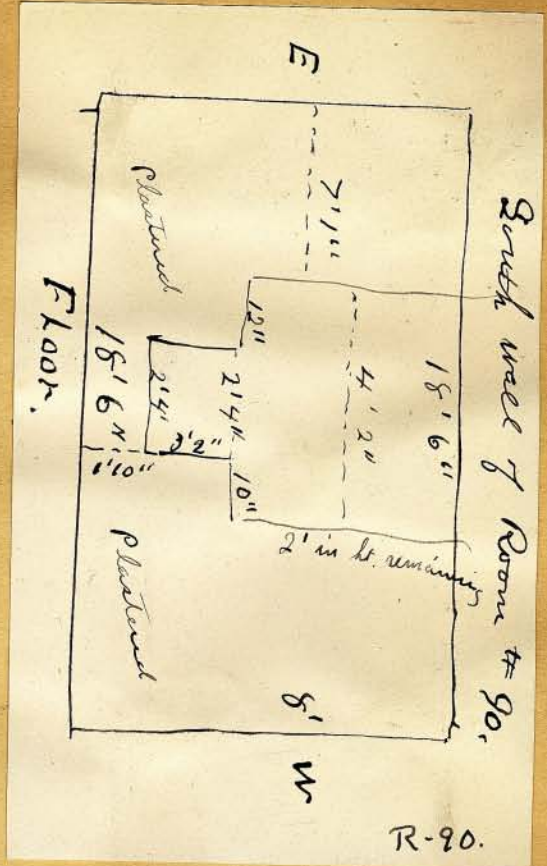
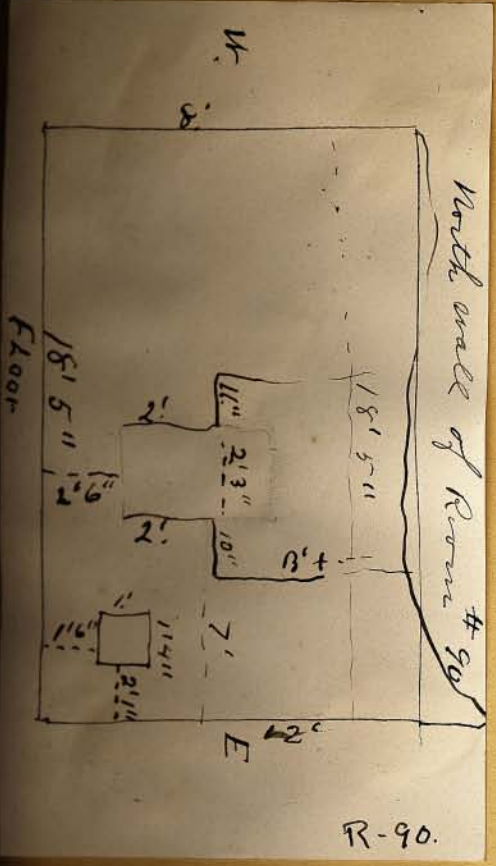


Pin #9 - R-90.

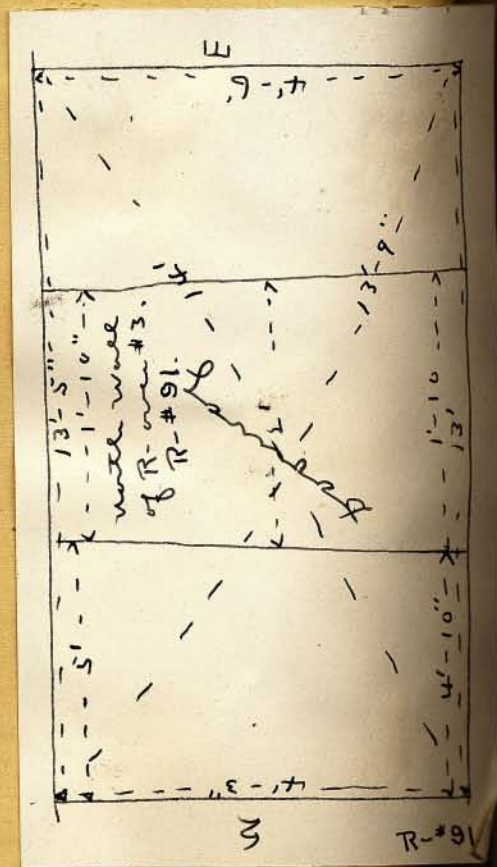
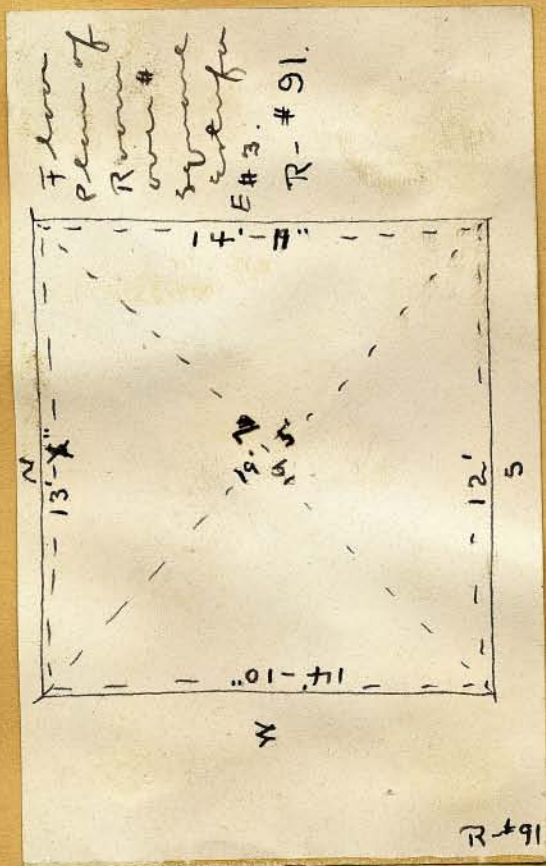
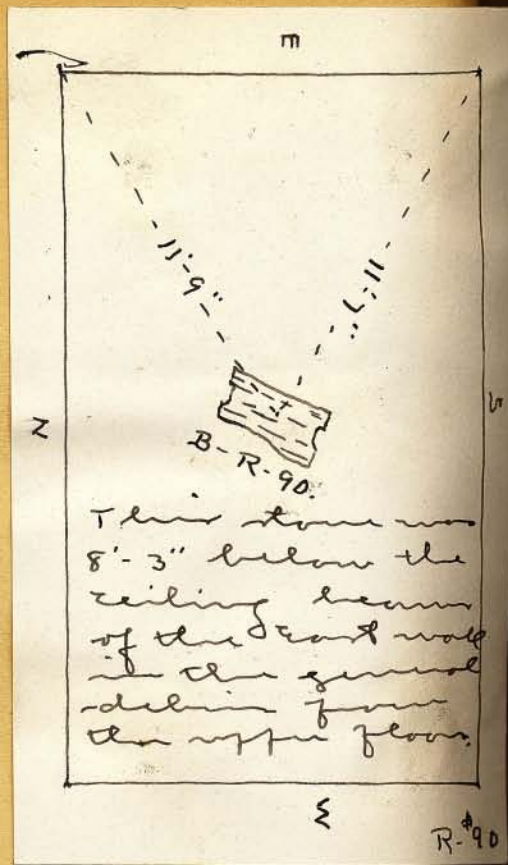
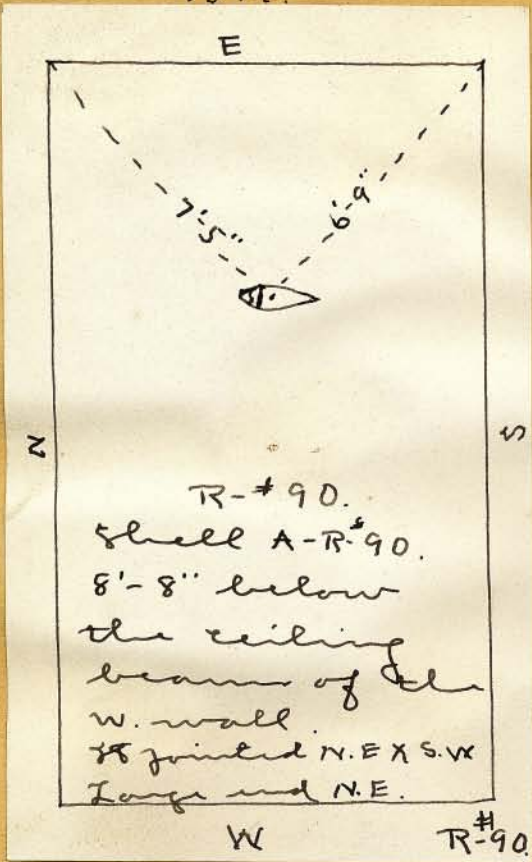


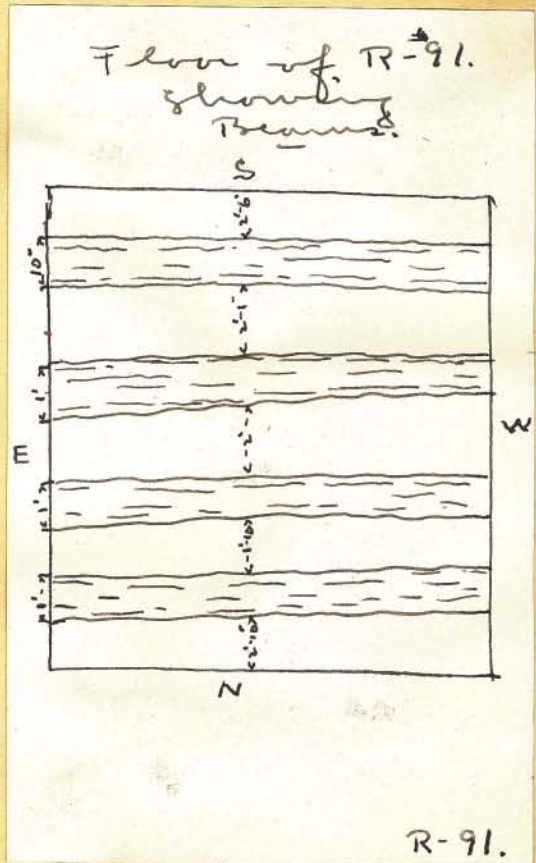
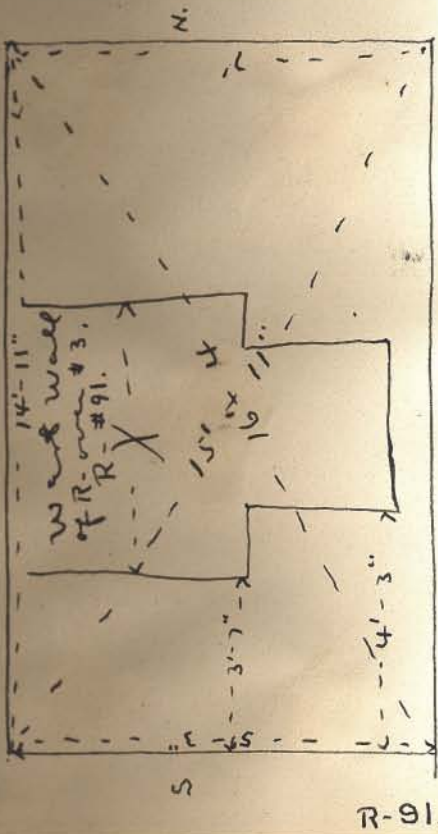
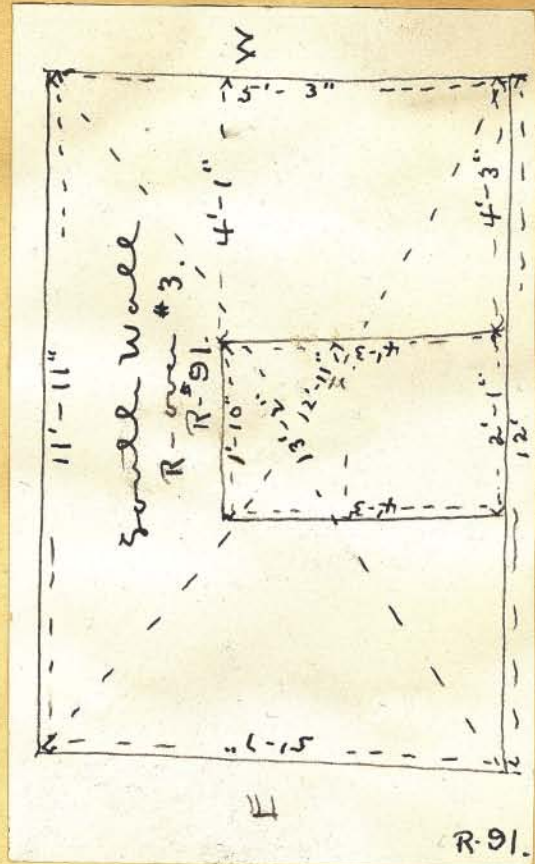
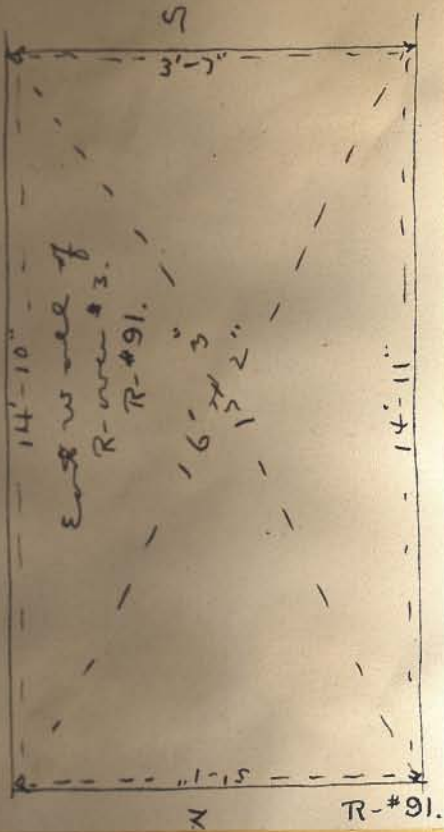
Water Root above Pin #9 - R-90

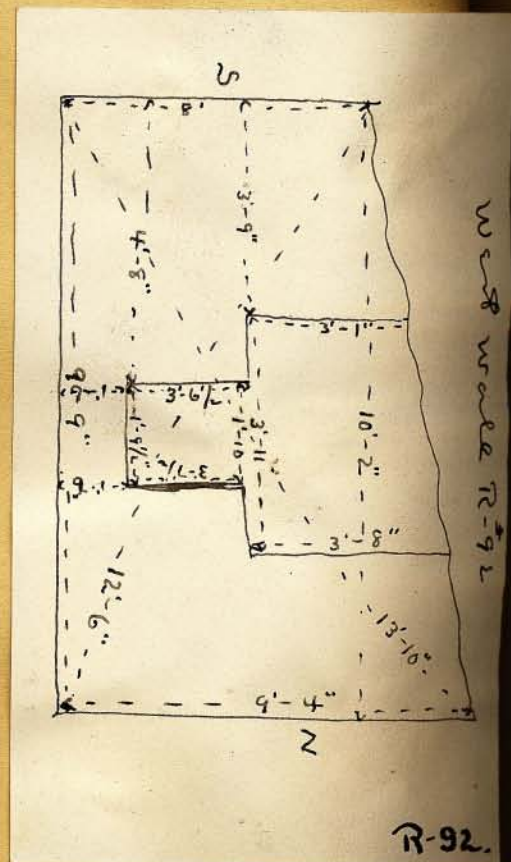
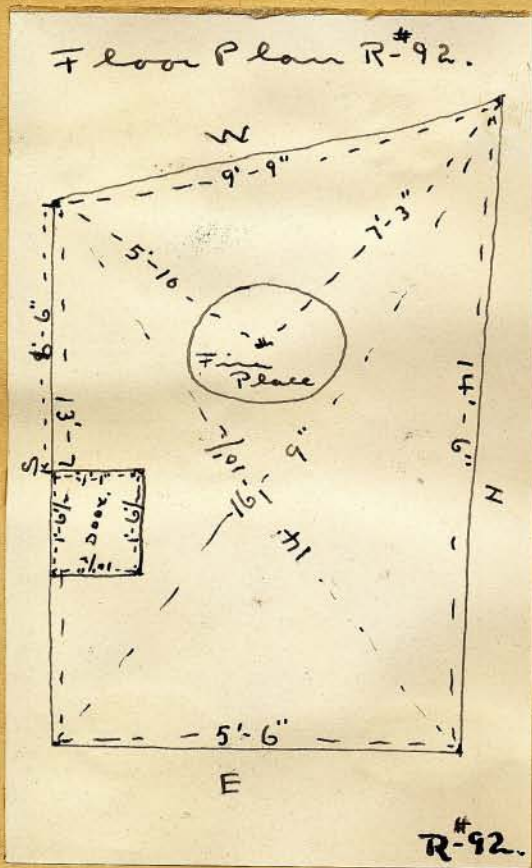
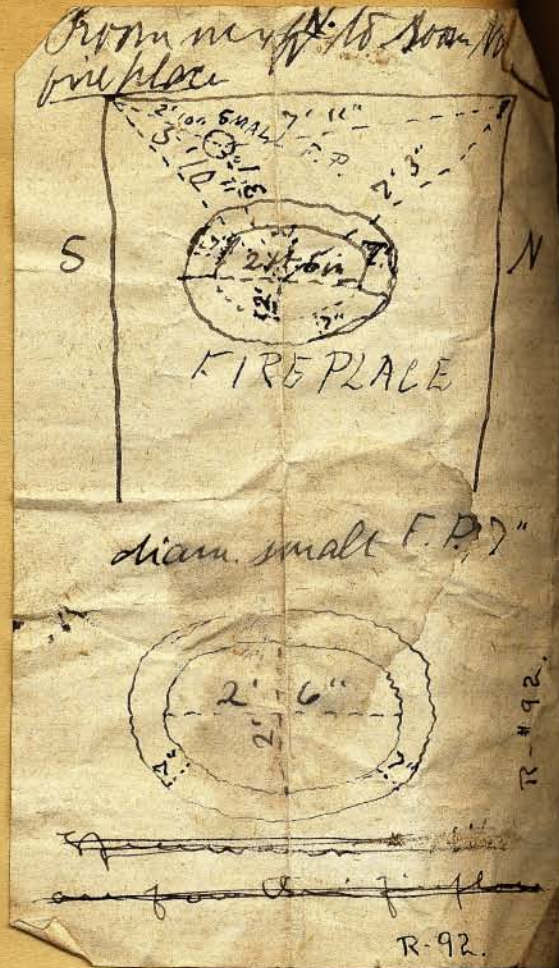
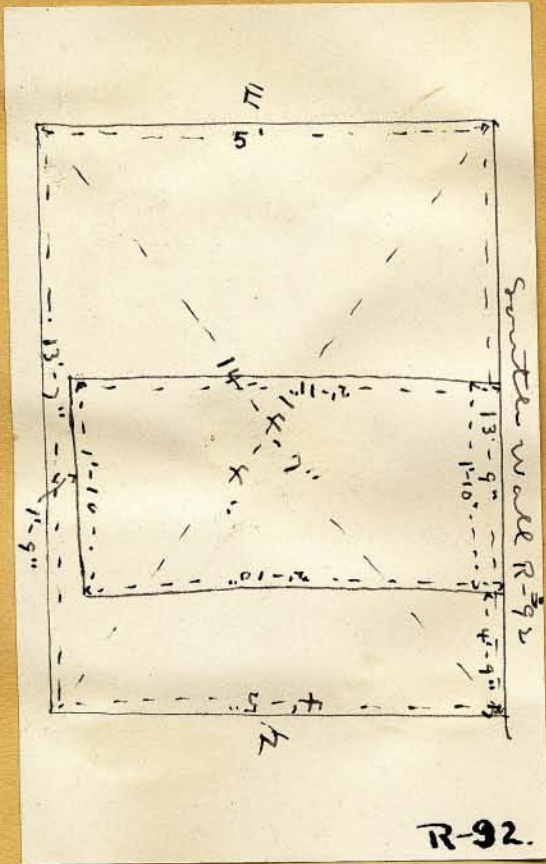


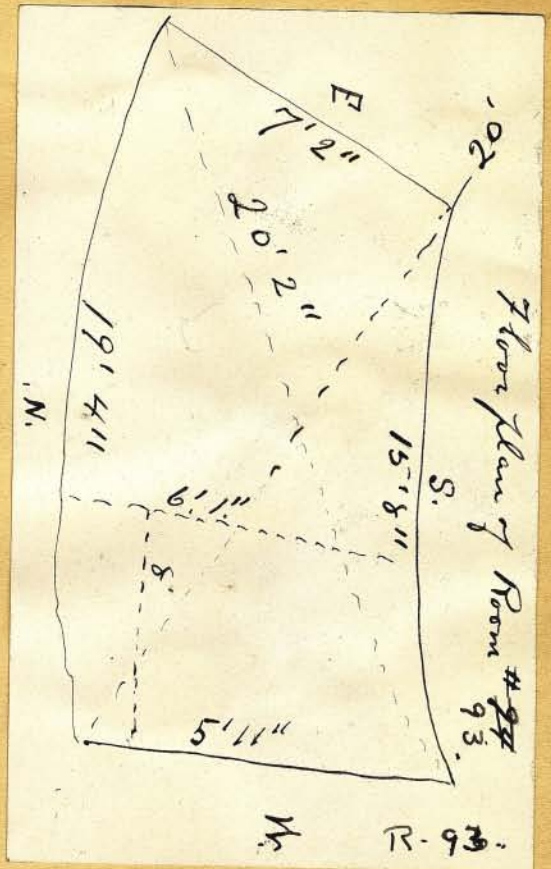
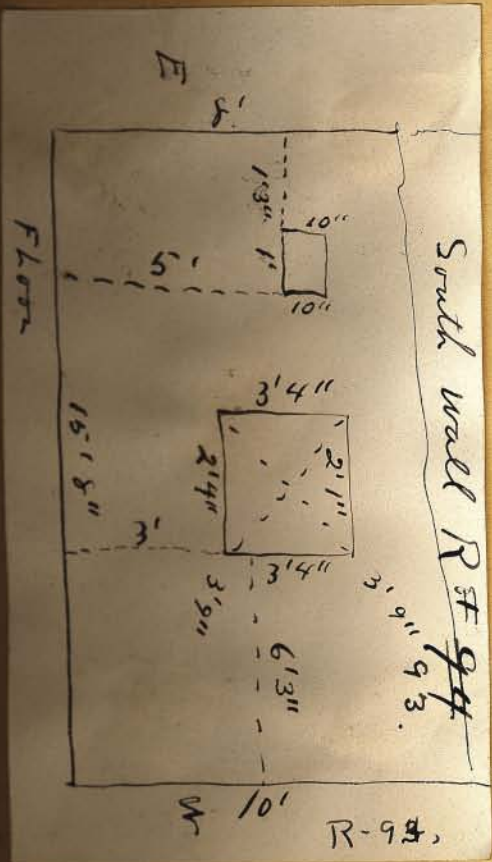
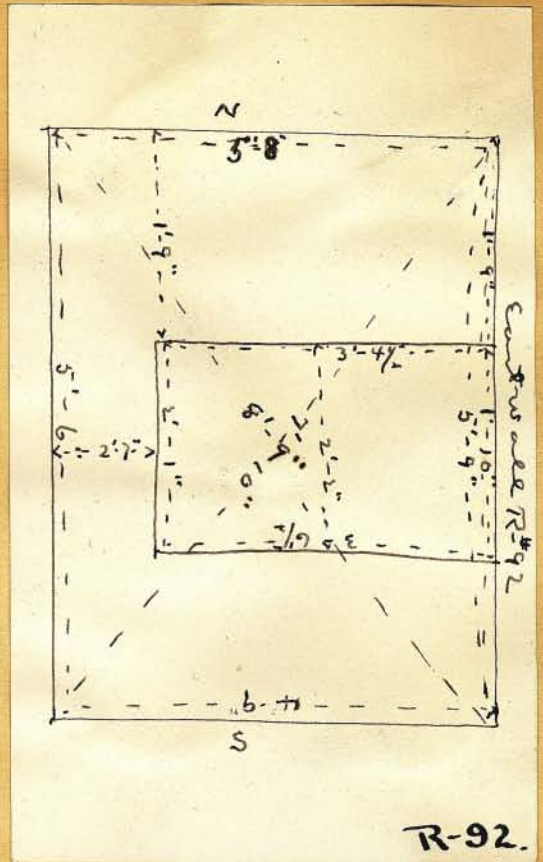


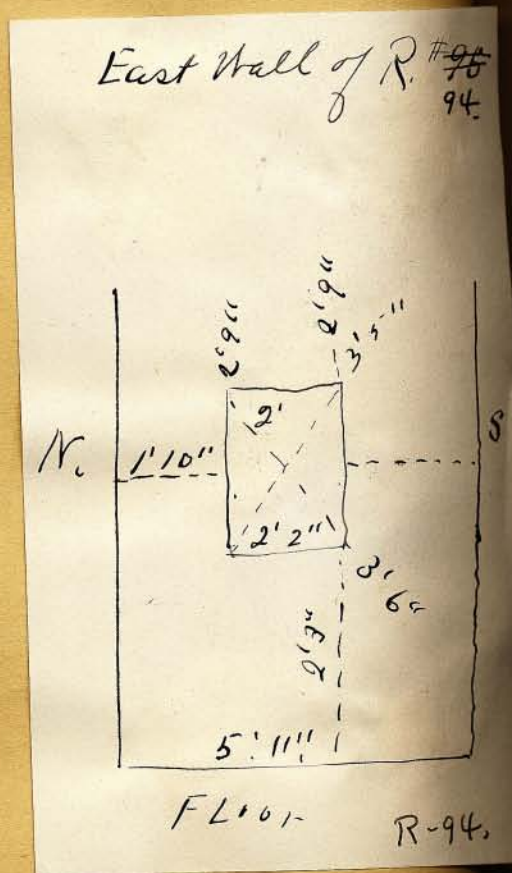
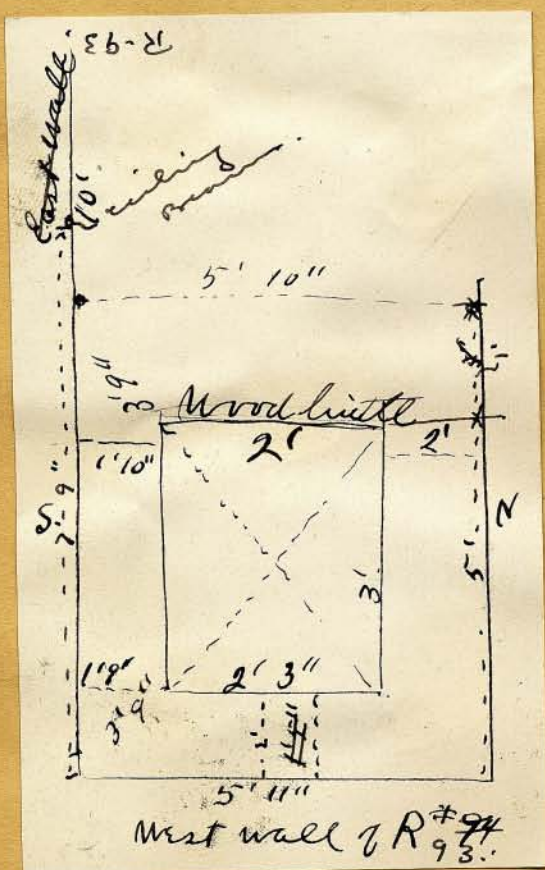
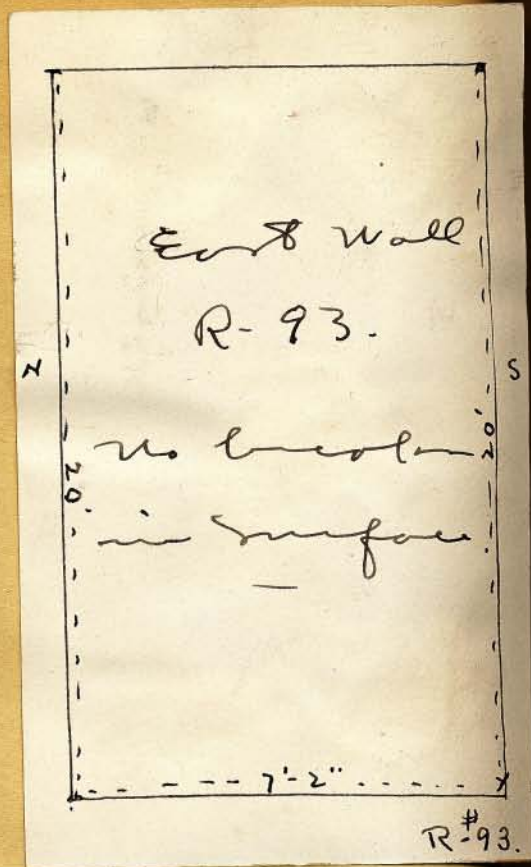
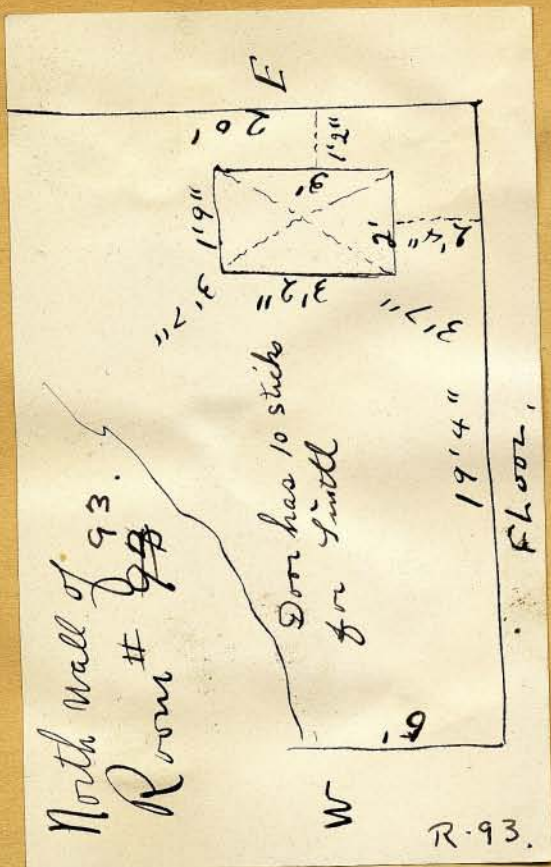
H
7594.

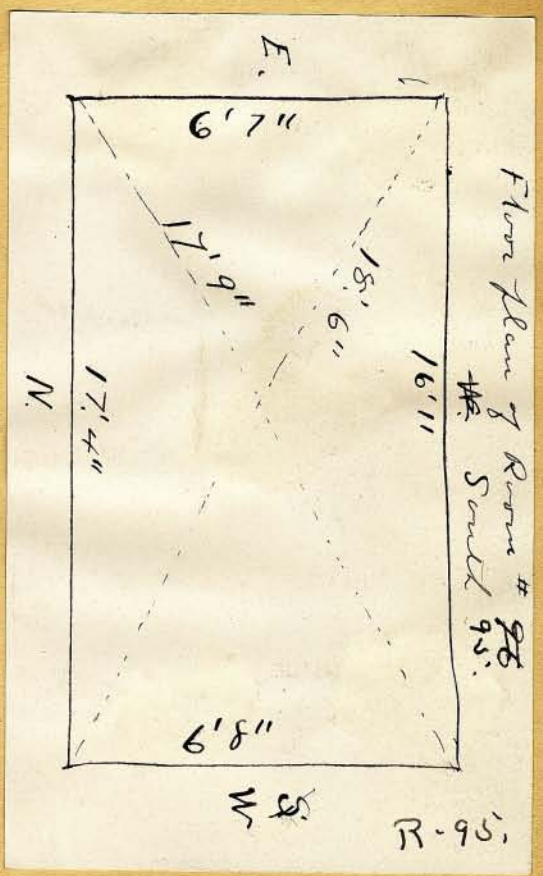
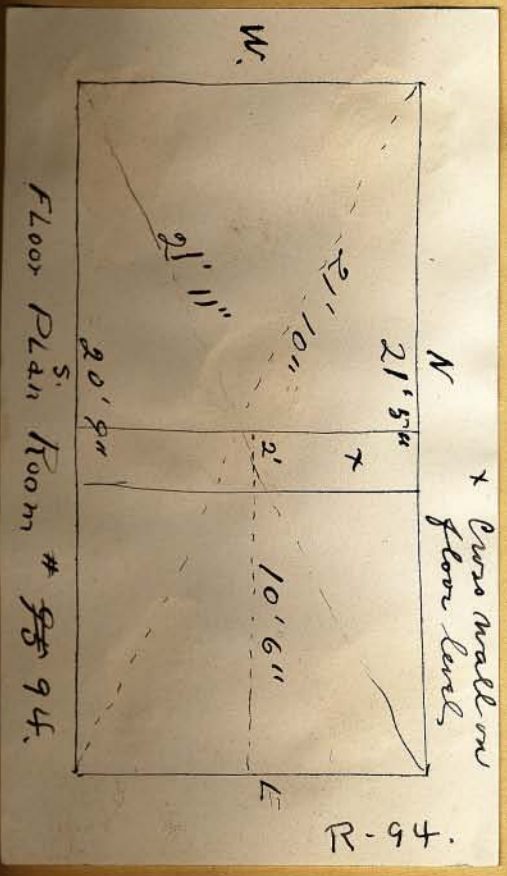
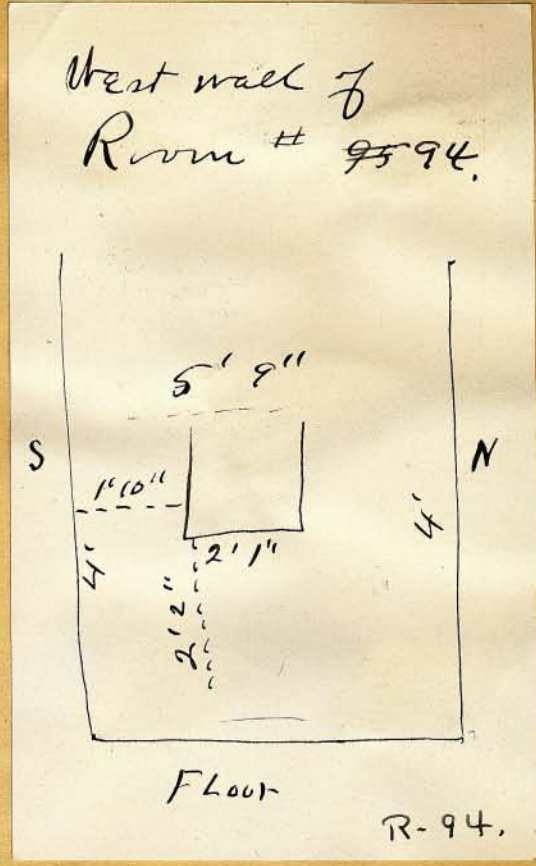
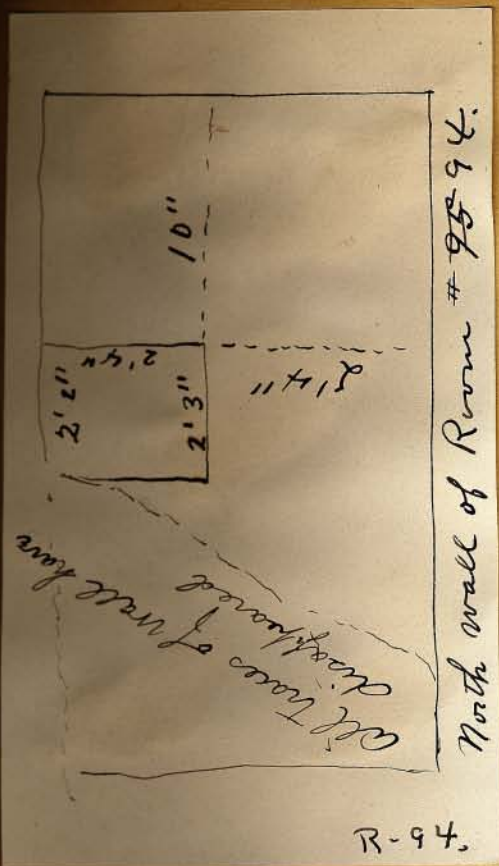


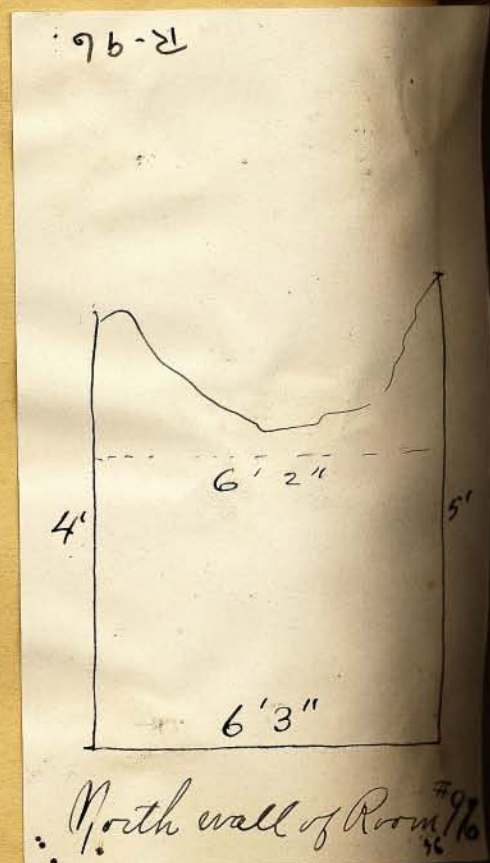
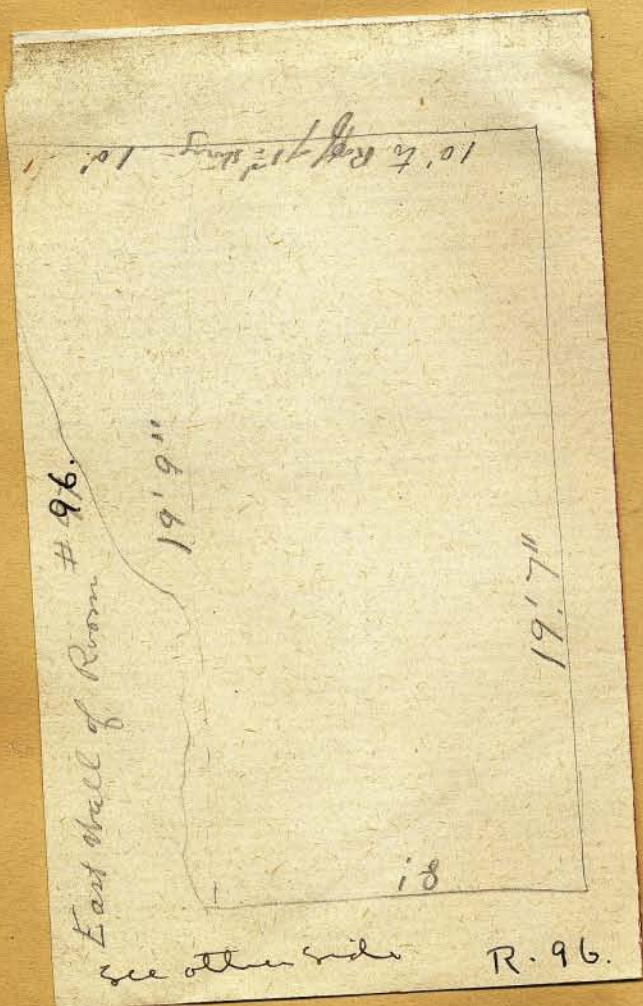
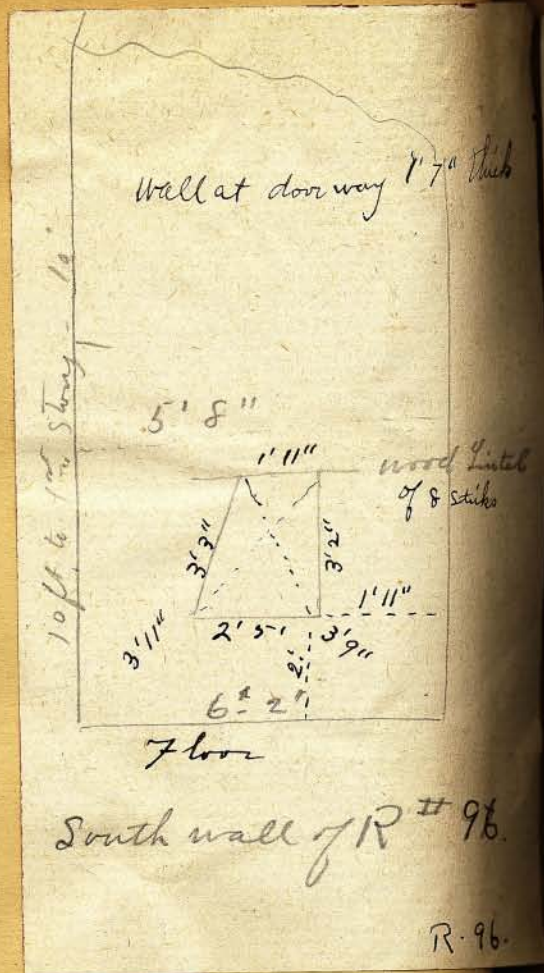
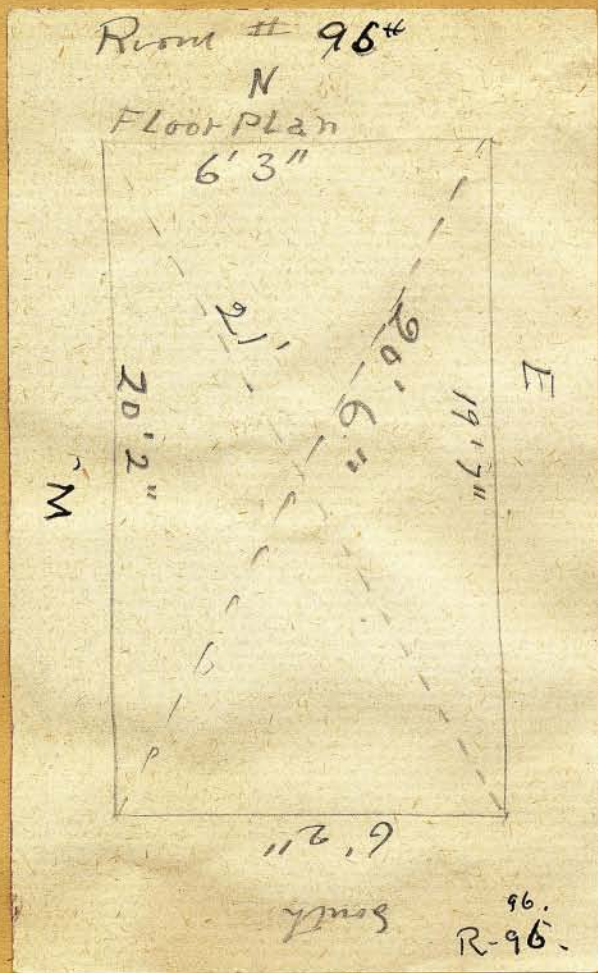






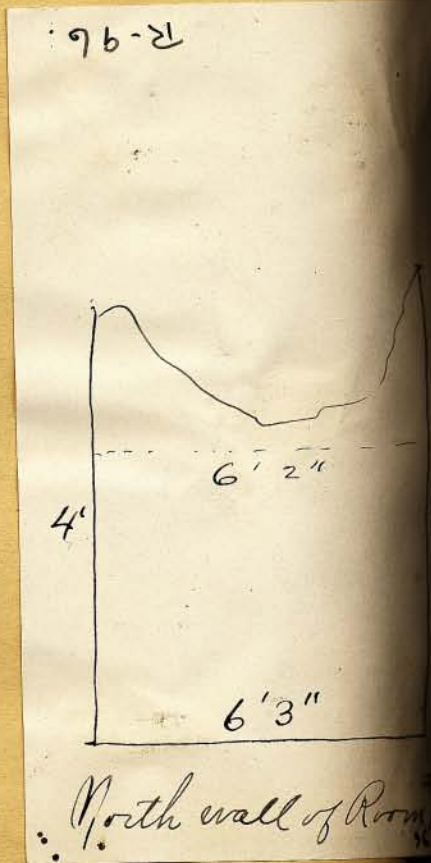
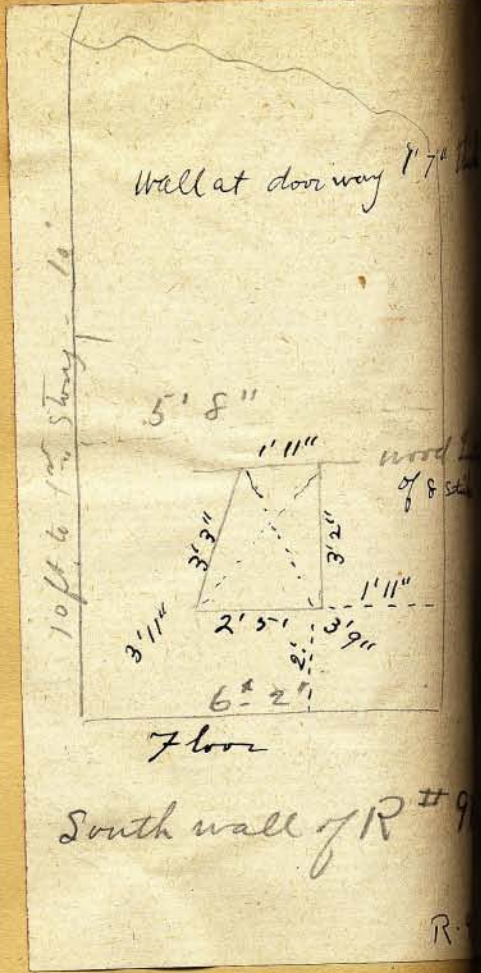


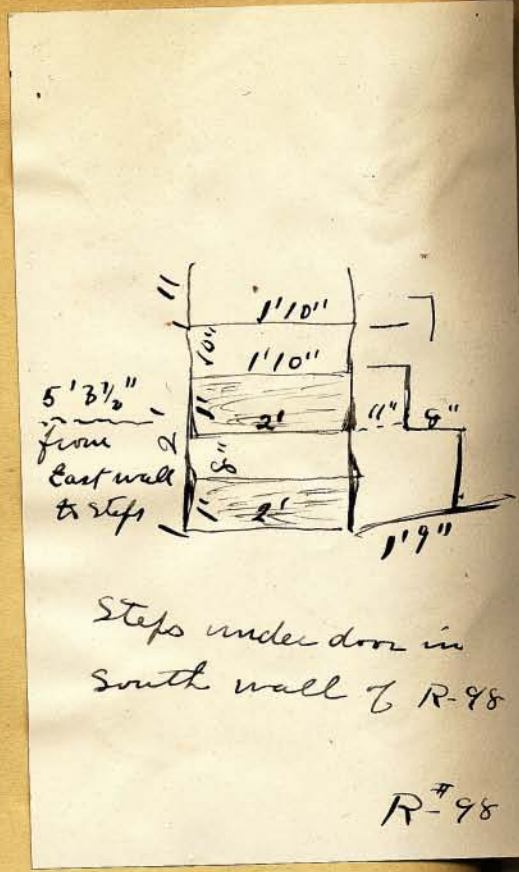
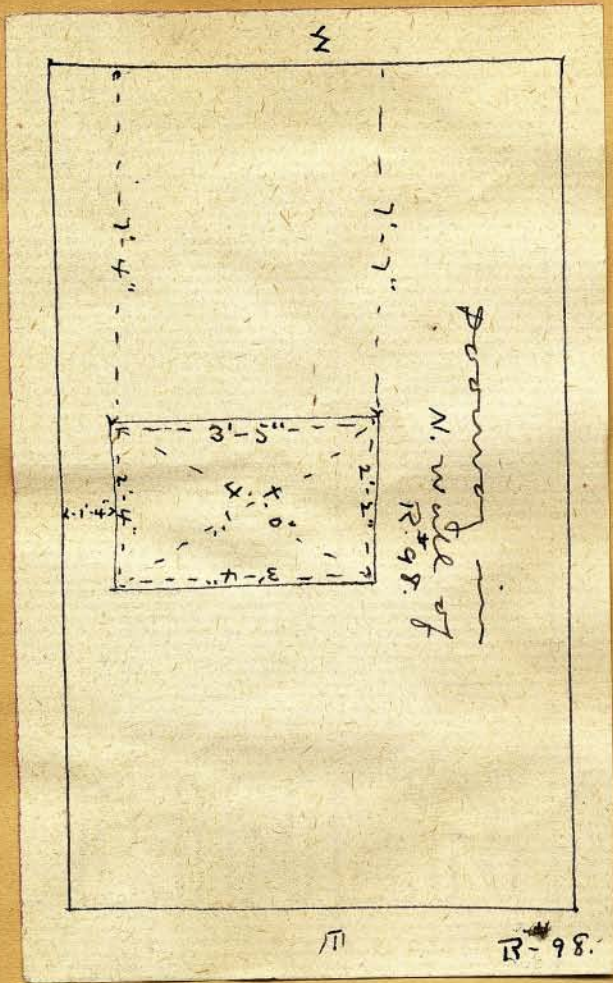




Room # 96[#]

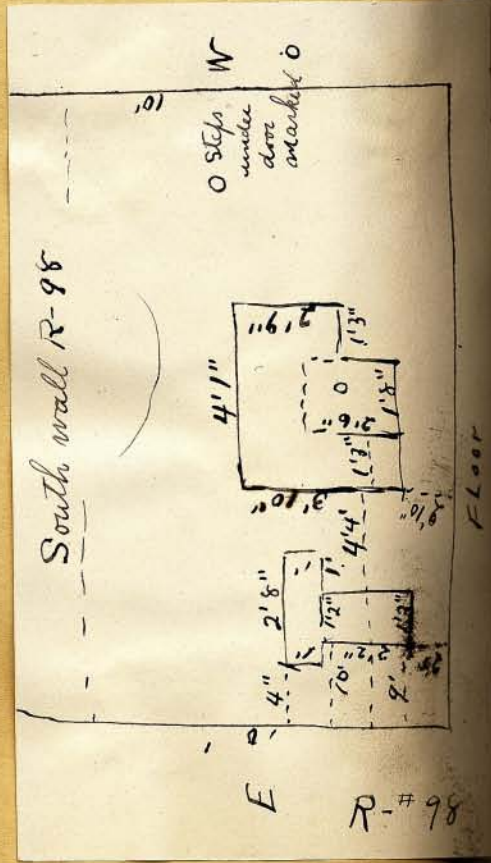
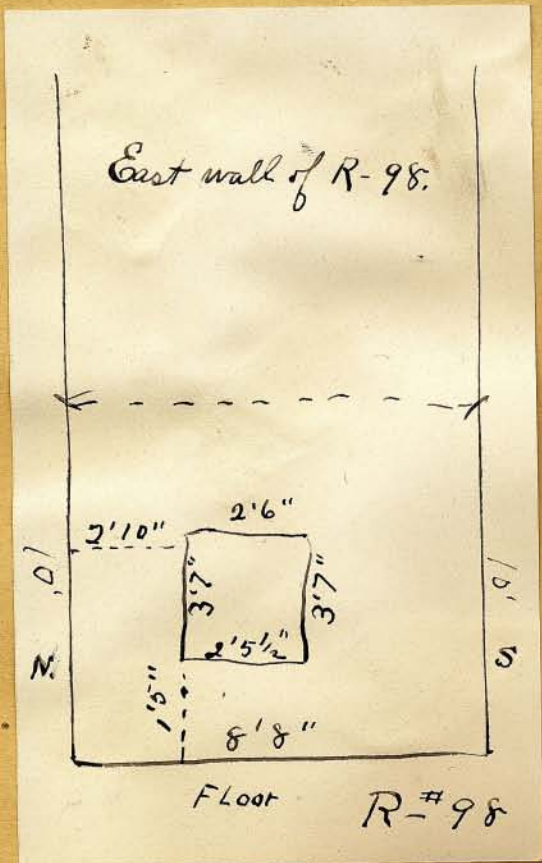
made at end of 707
 made 6'-6" in width
 on same corner with
 on same wall as 5 wall (73)
 11-44
 7-44
 1-21
 5 wall above at 2 end
 south side wall

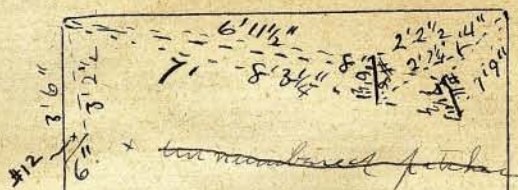




Steps under door in South wall of R-98

R-98



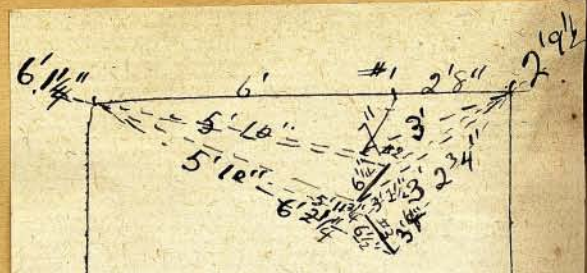


West End R #99

#'s 8 & 11

2' 4" from top of
Pottery to under
side of floor in
West End on
wall plans

R-99.

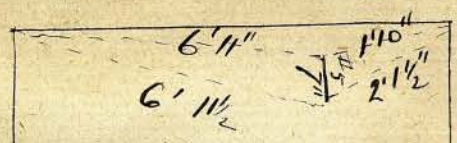


#1. 2 & 3.

R # 99

West End.
5' 4" from upper
side of vessels
to bottom of Ventilation
in North wall

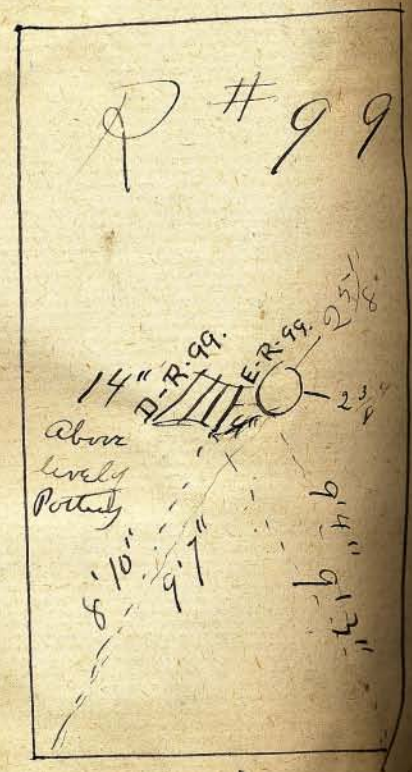
R-99.



Room #99

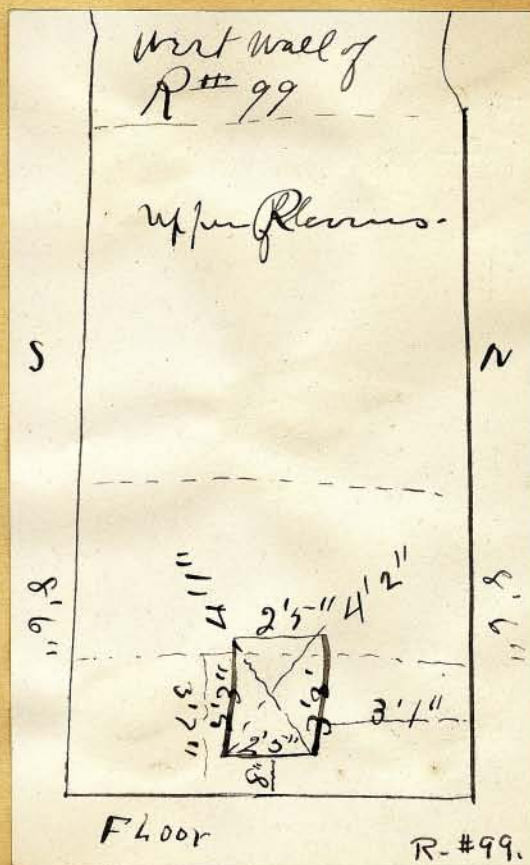
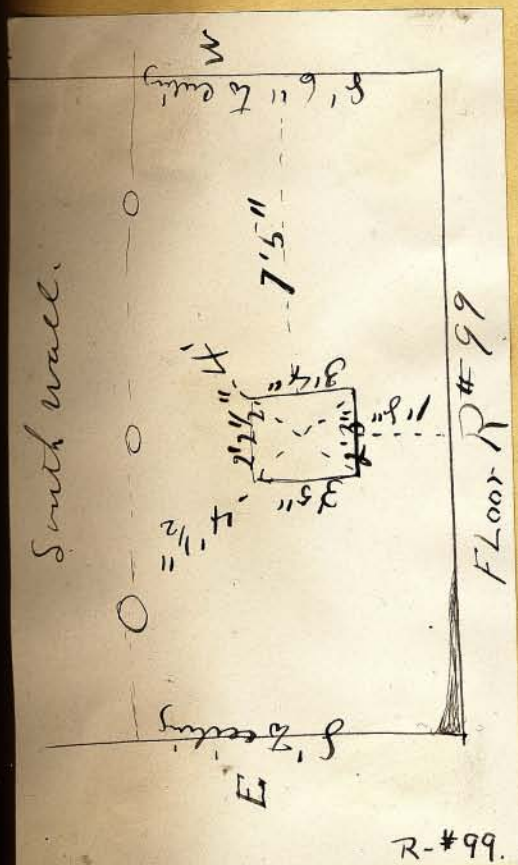
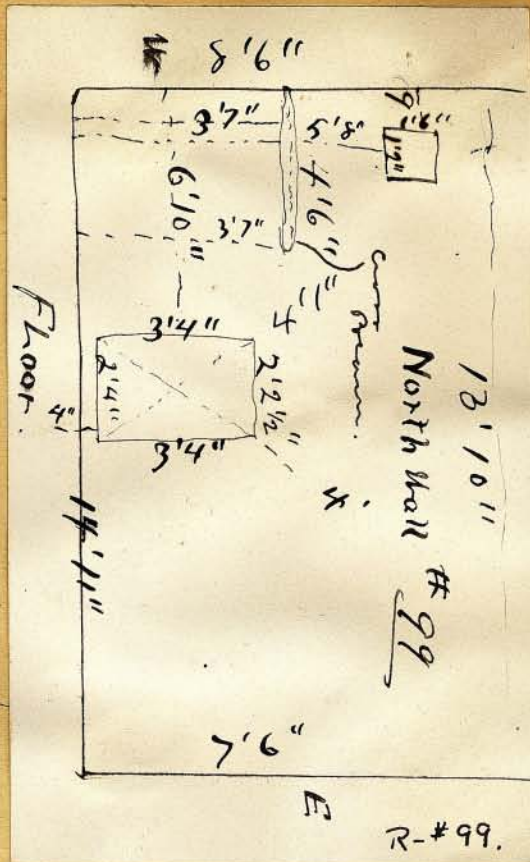
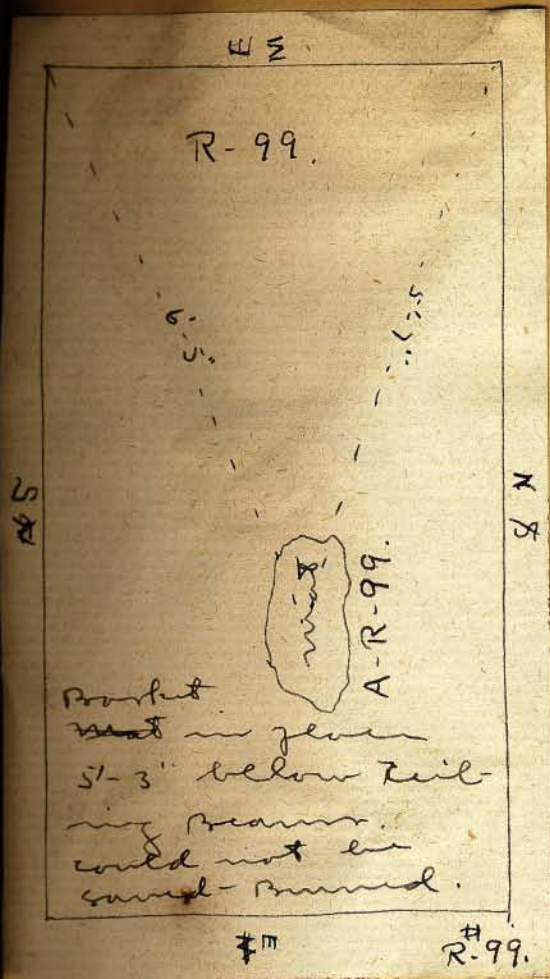
5

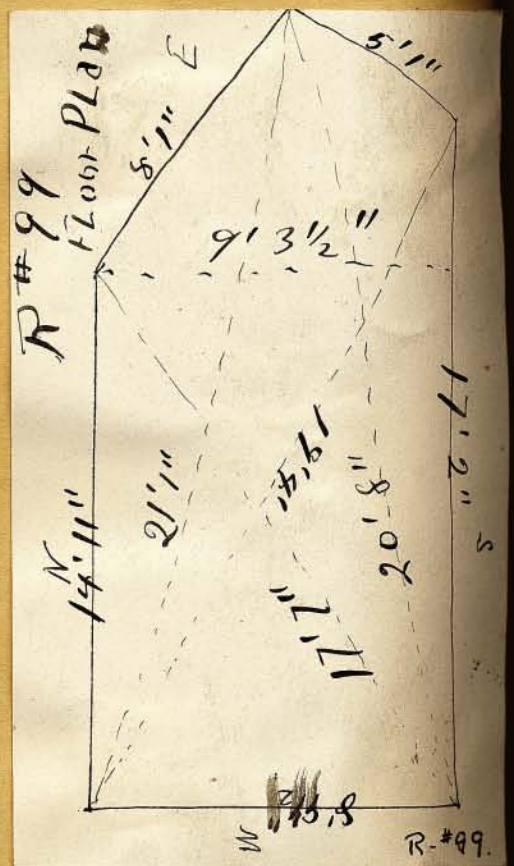
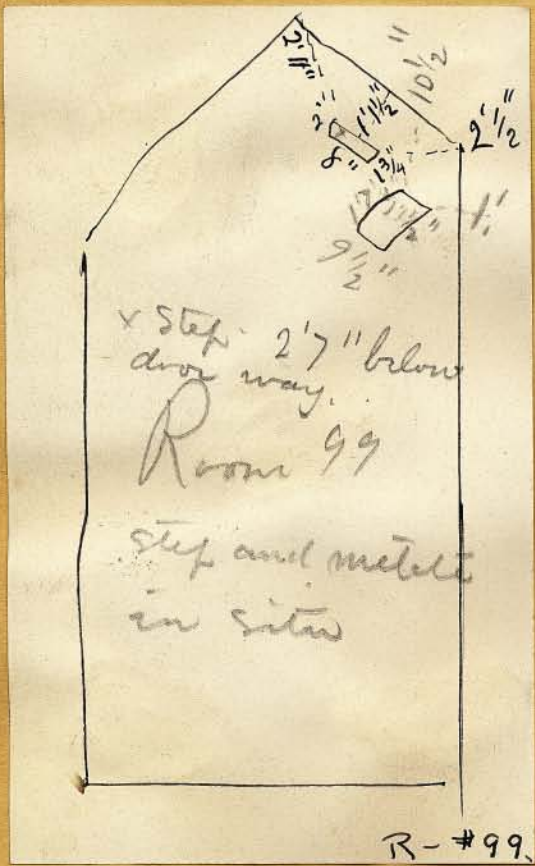
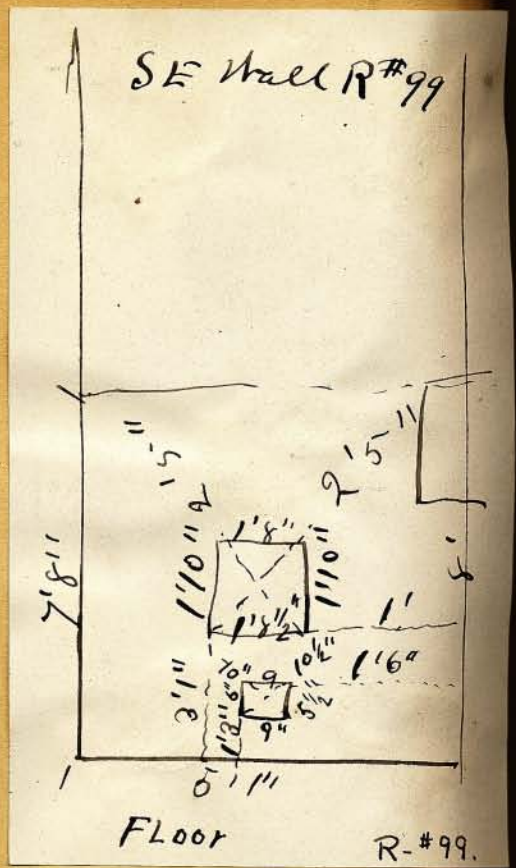
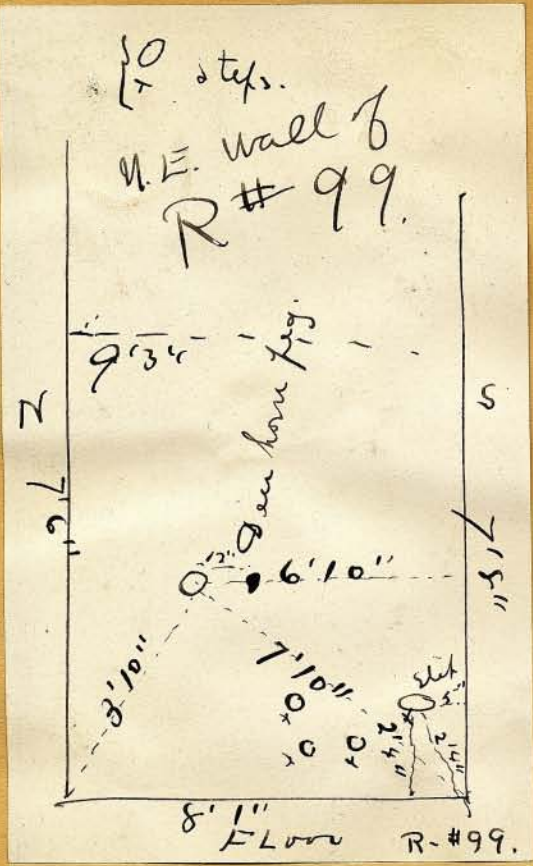
R-99.

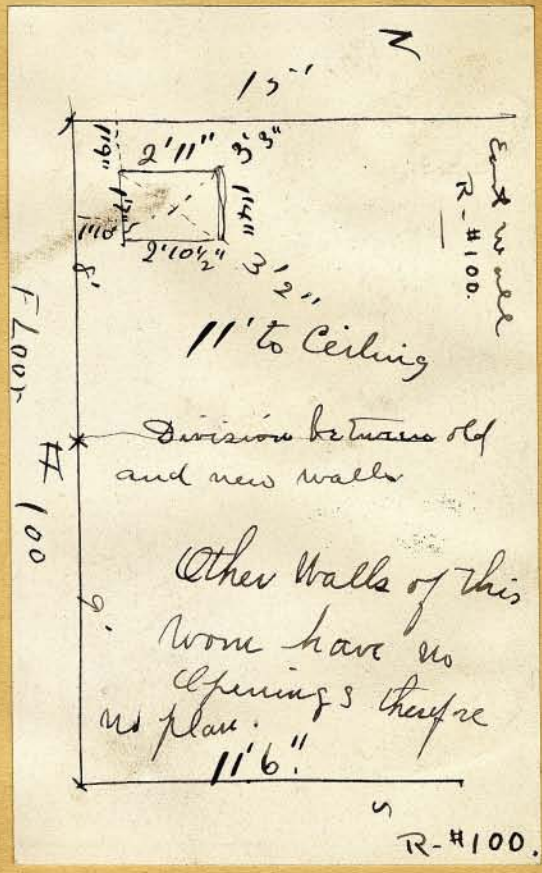
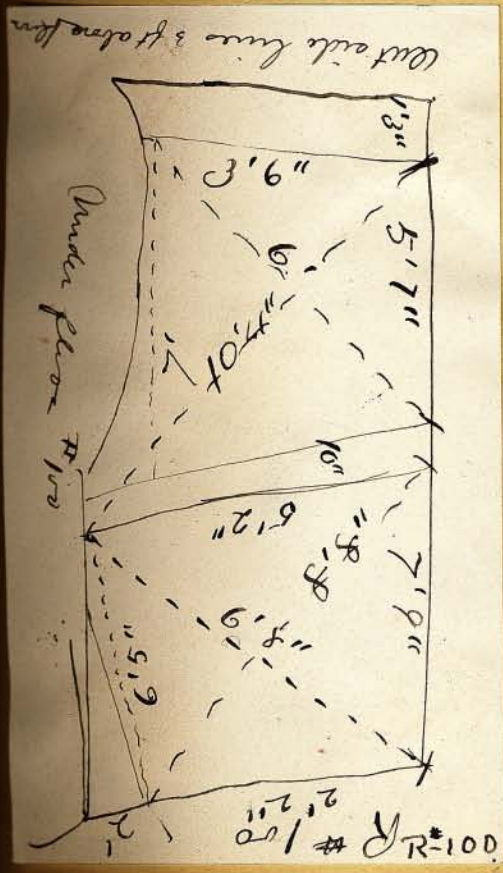
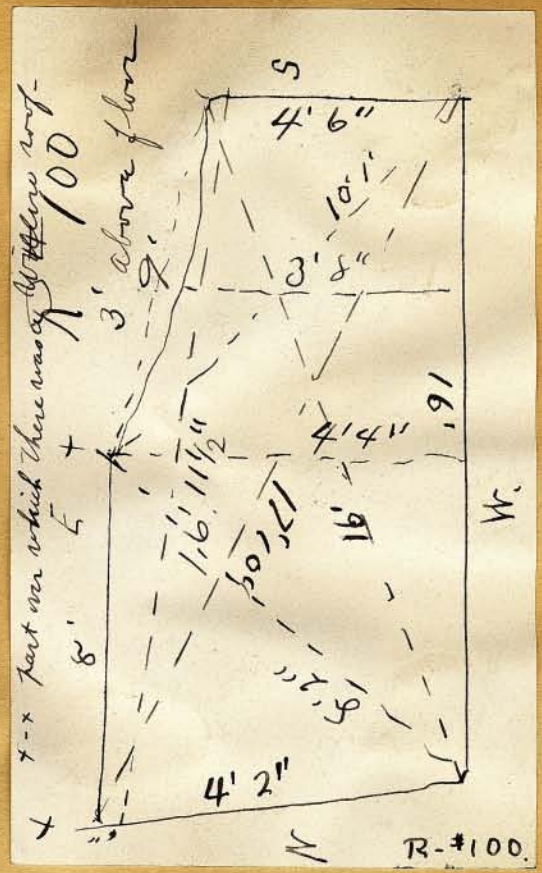
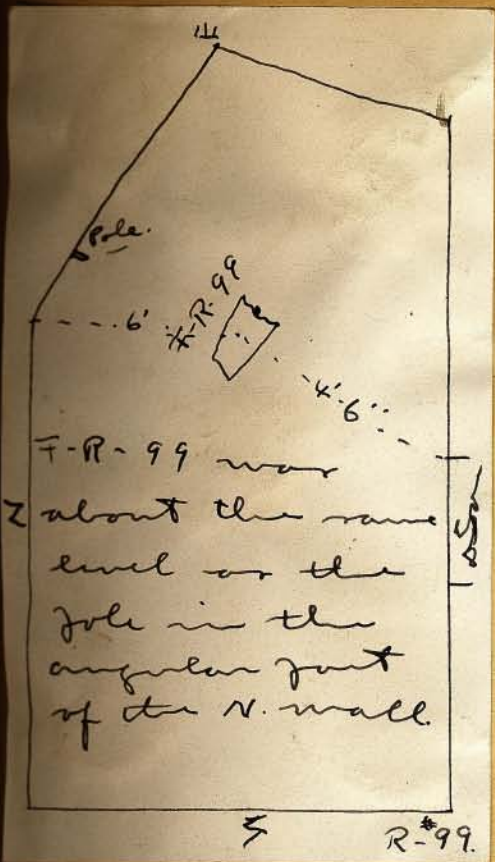


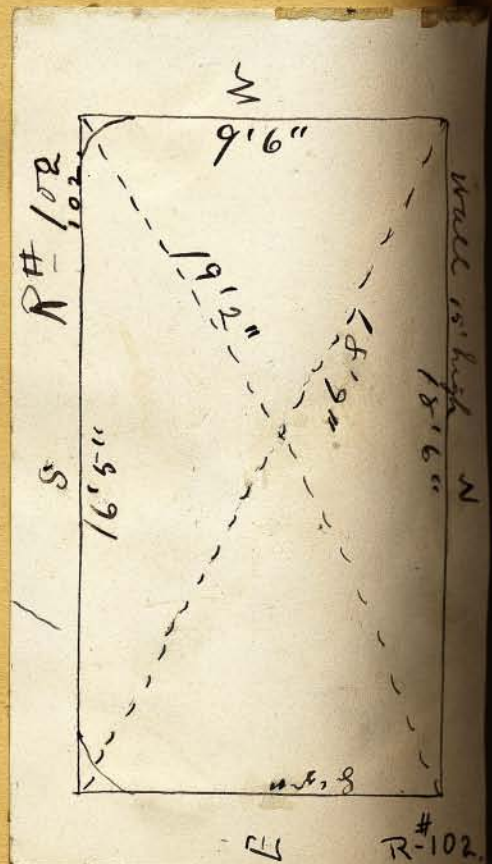
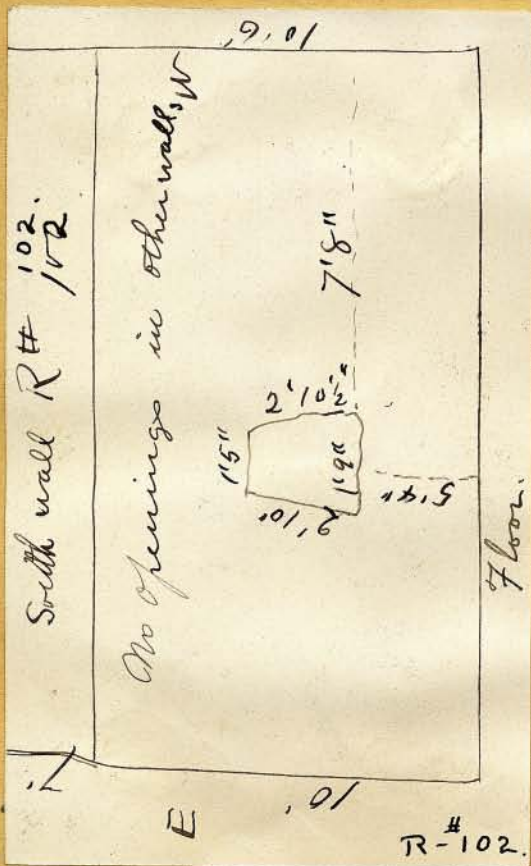
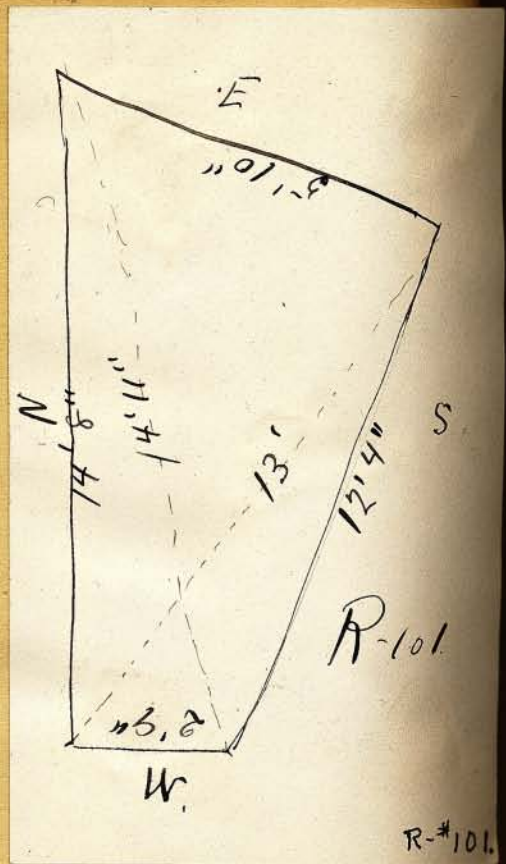
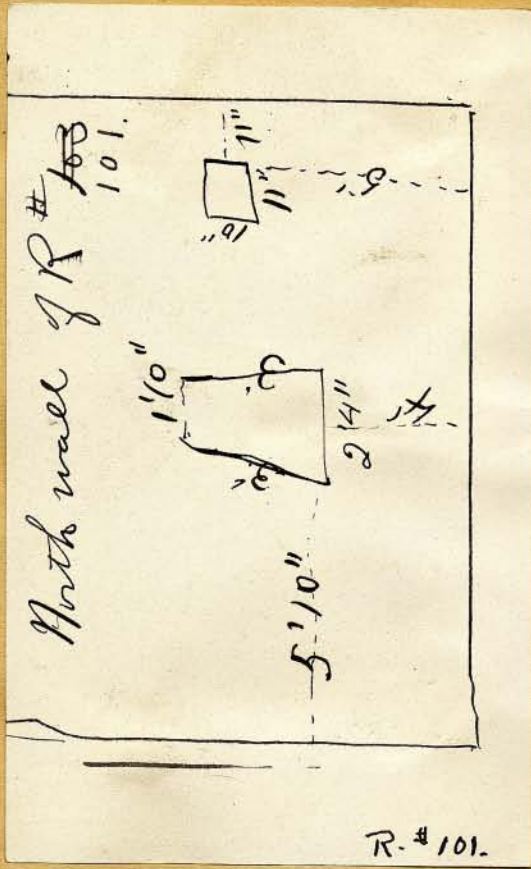
West

R-99.

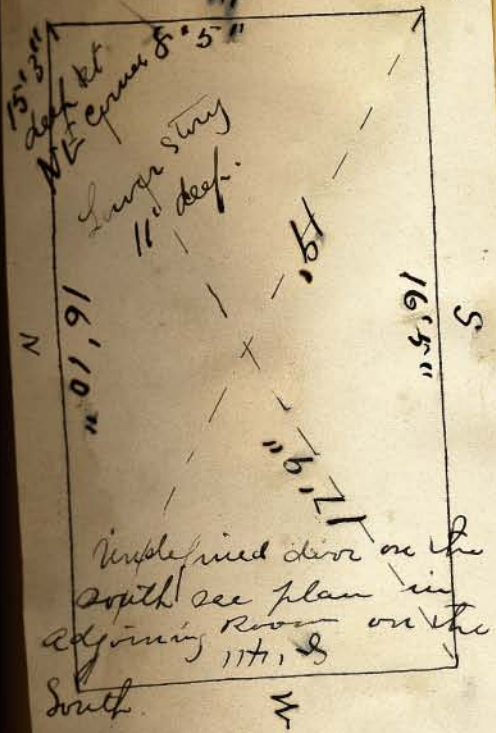






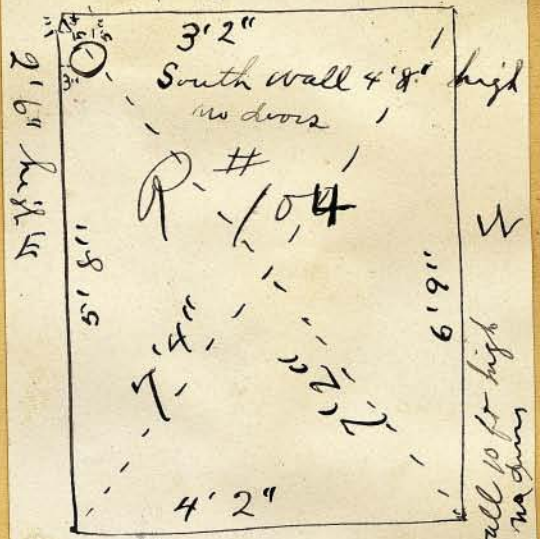


Floor Plan R # 103.



R-103.

7 1/2" dia
2'2" high
above
ground

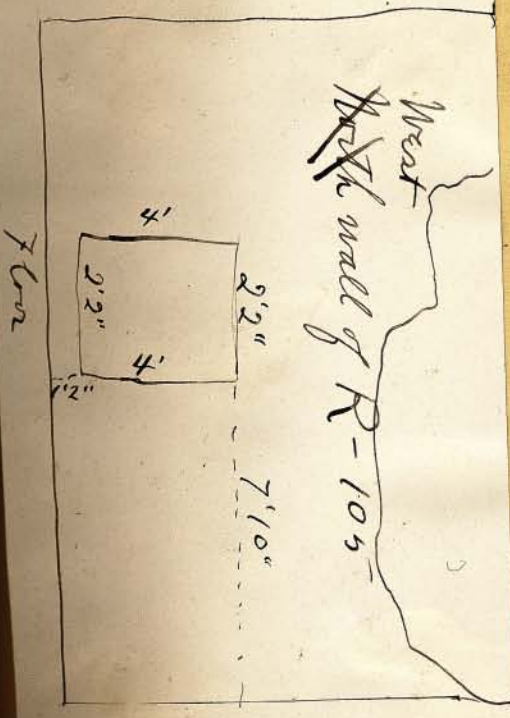


6 ft high. no doors
height of room from
floor to ceiling 8'6"

West wall 10 ft high
no doors

R-104.

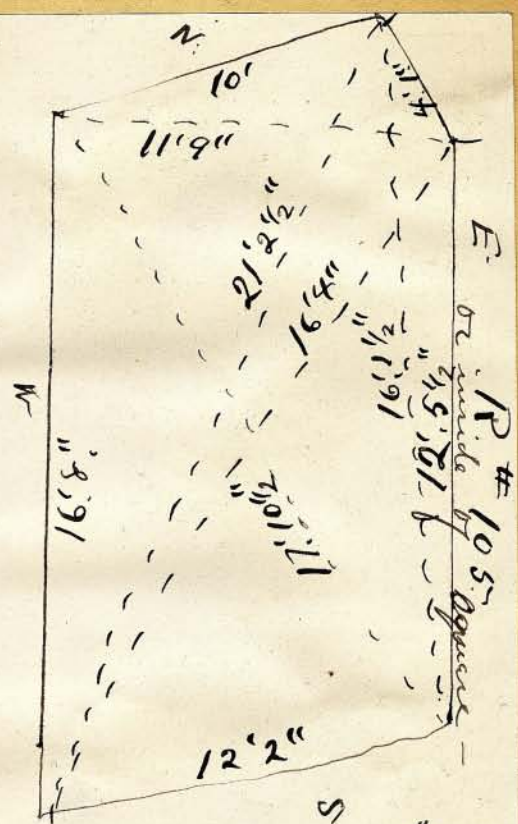
S



N

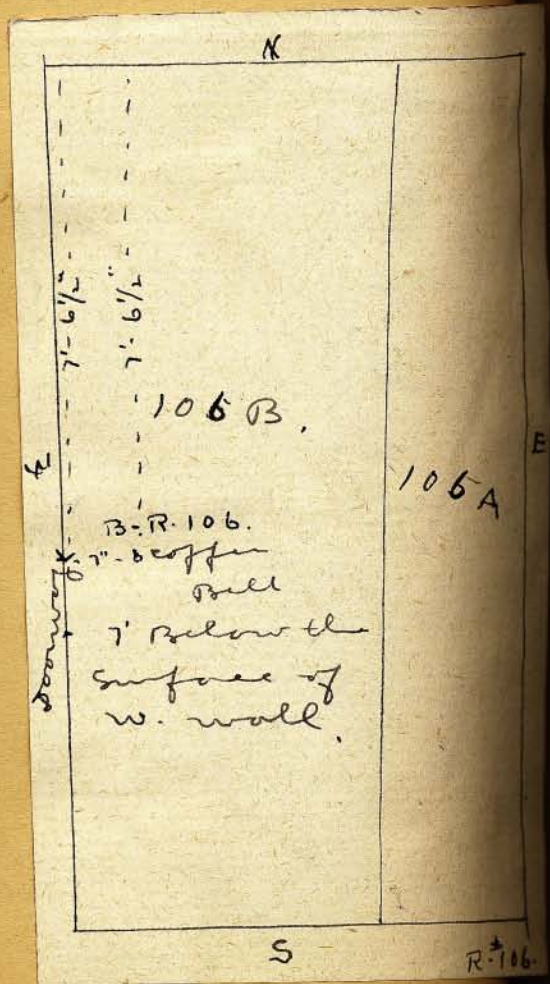
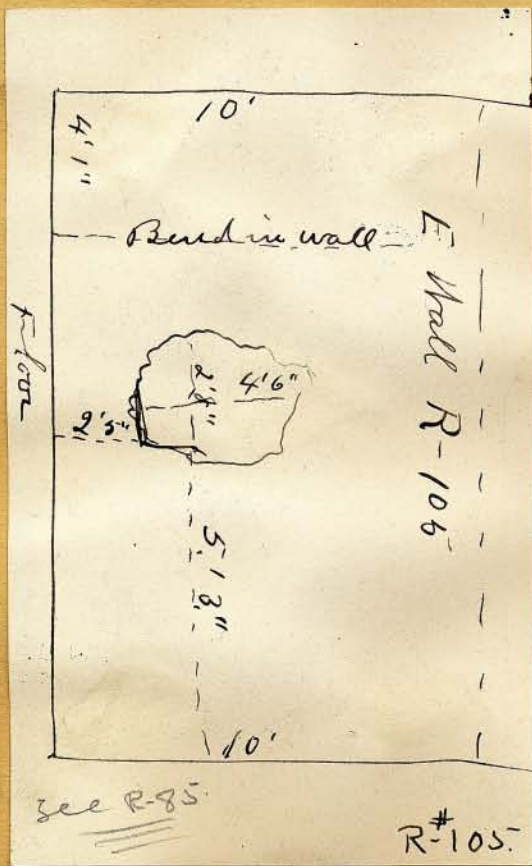
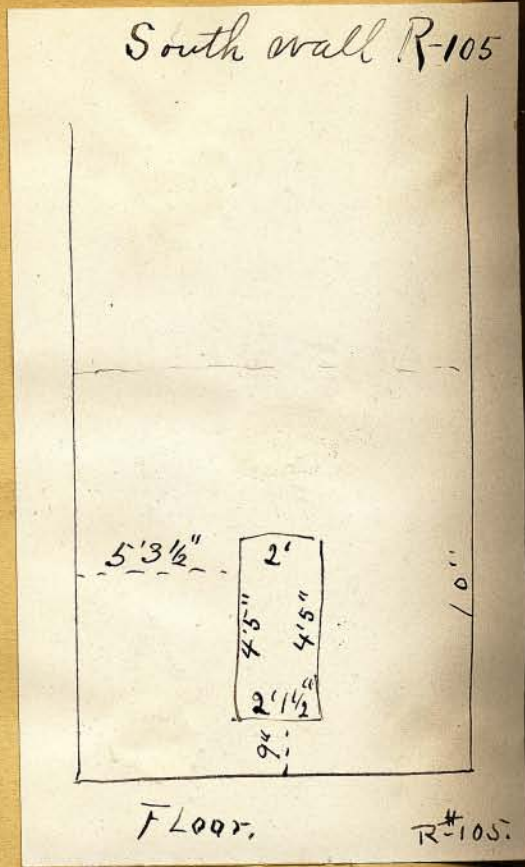
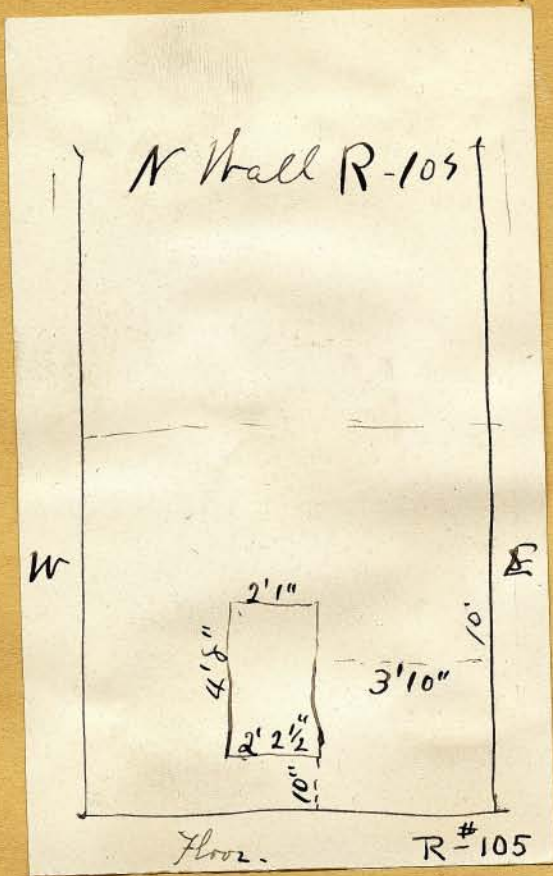
R-105.

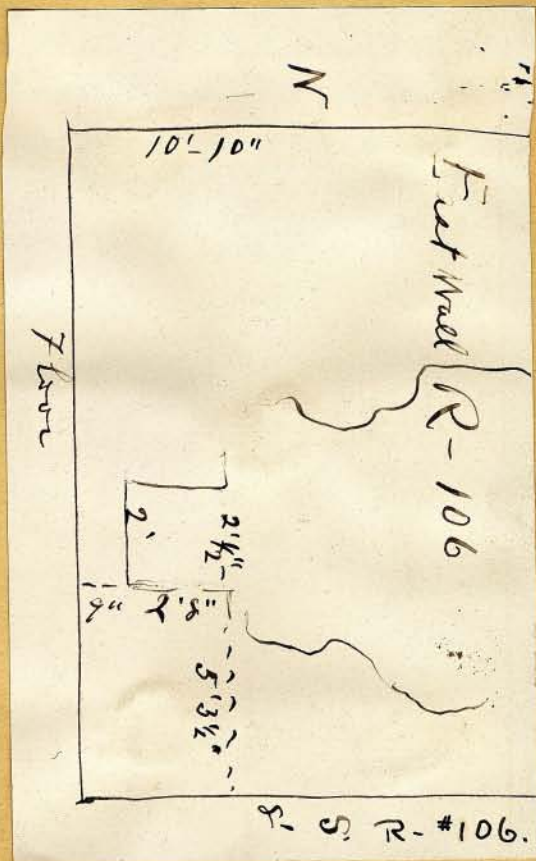
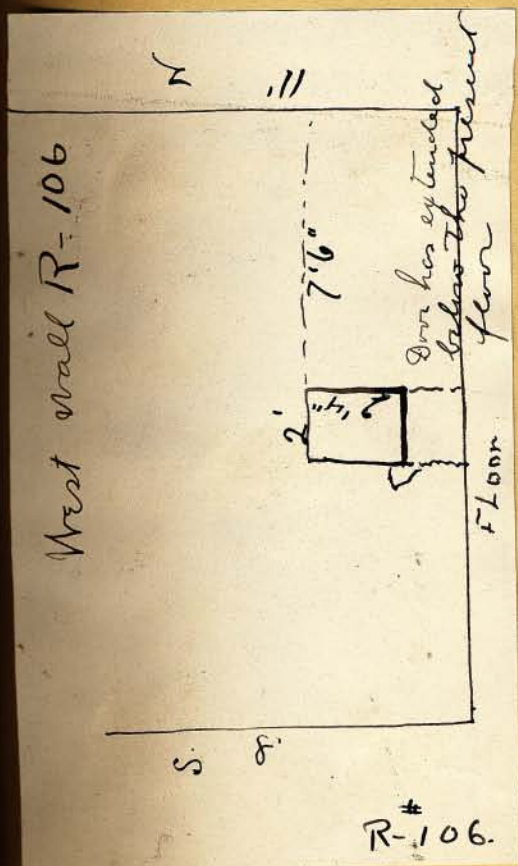
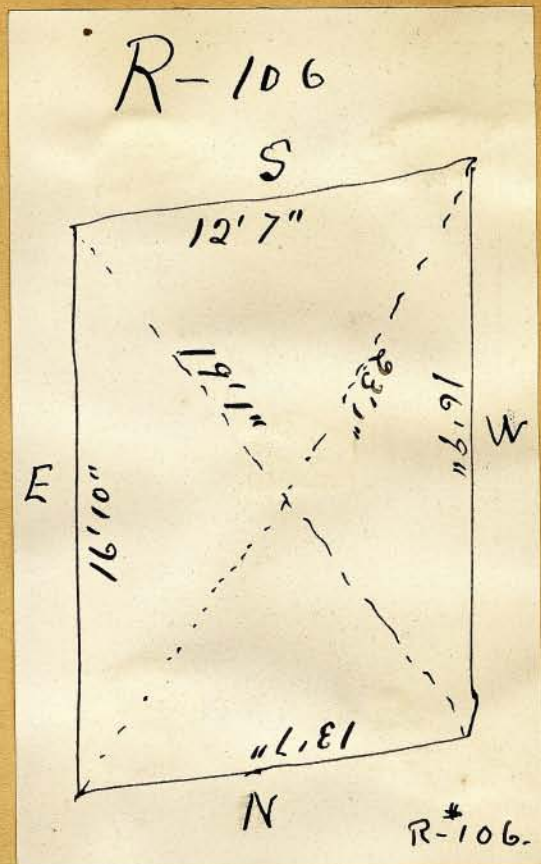
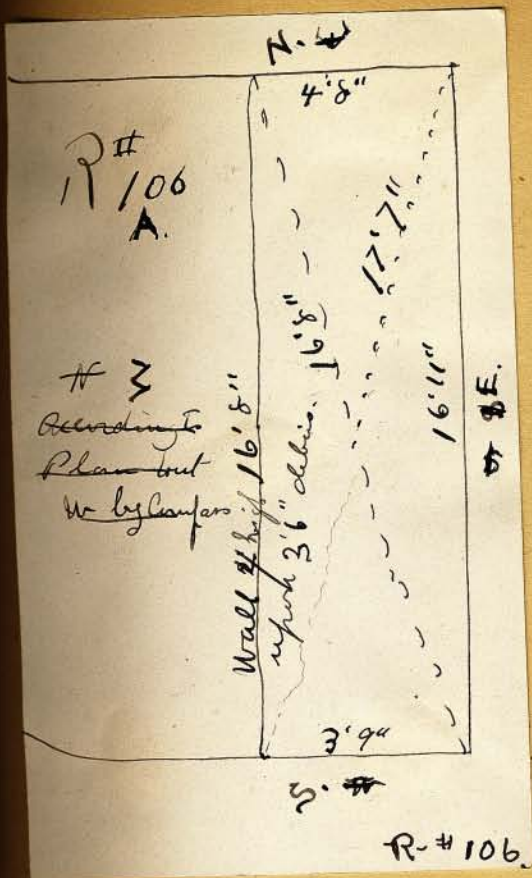
N

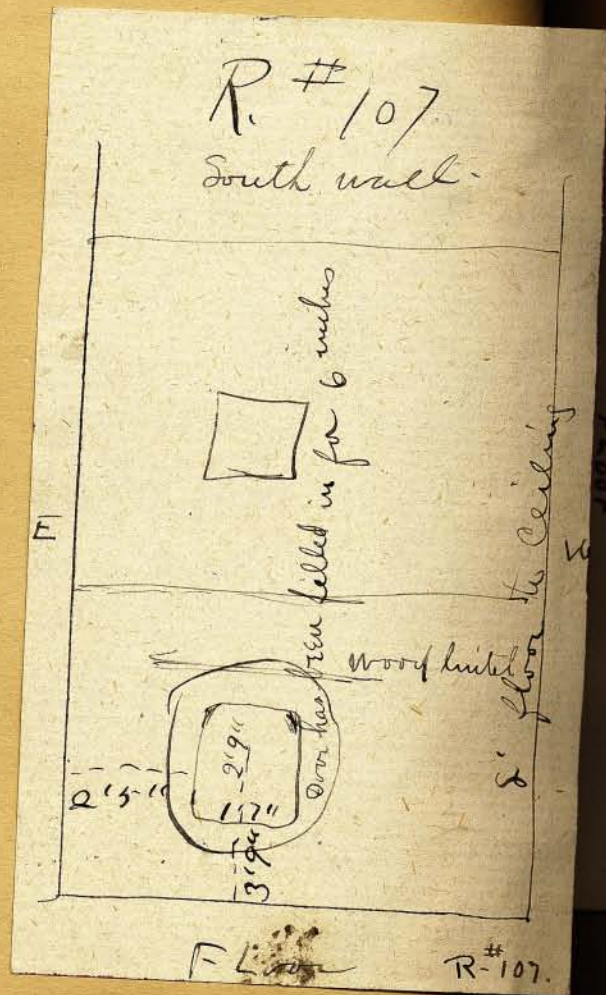
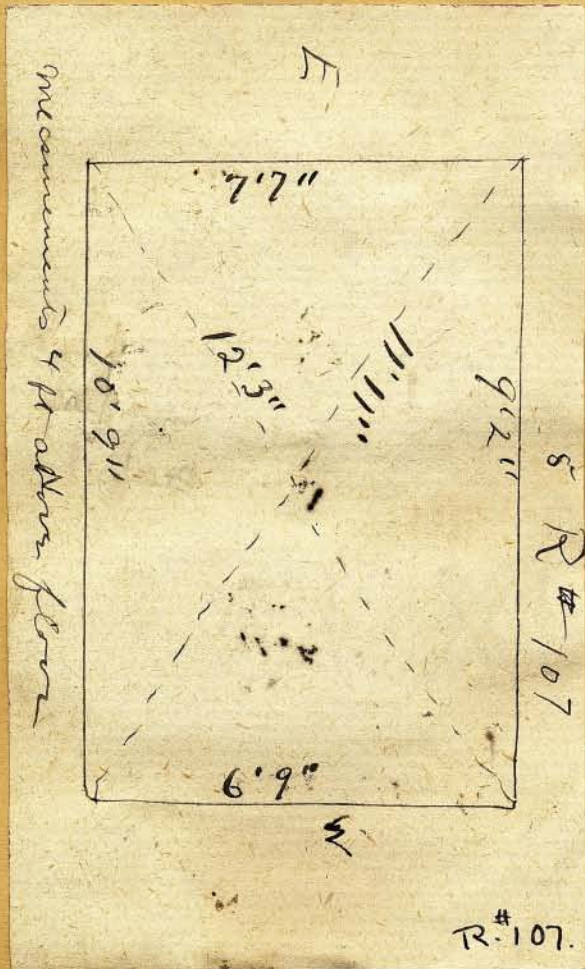
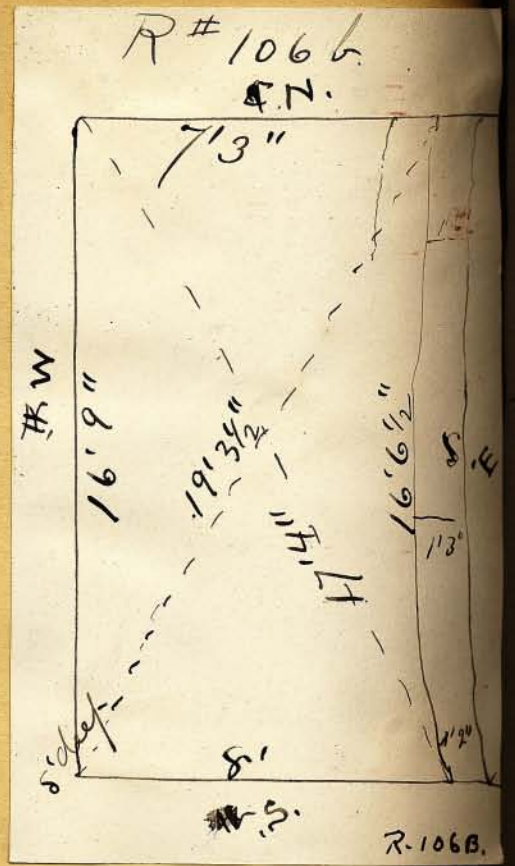
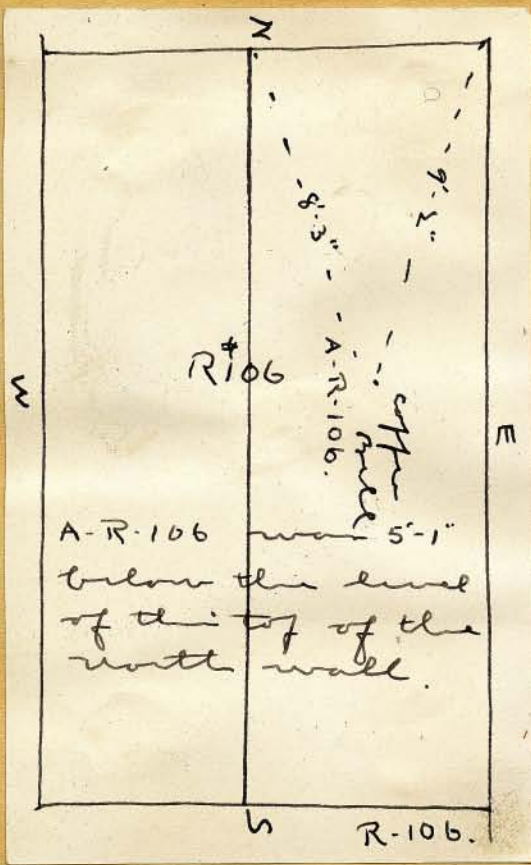


S

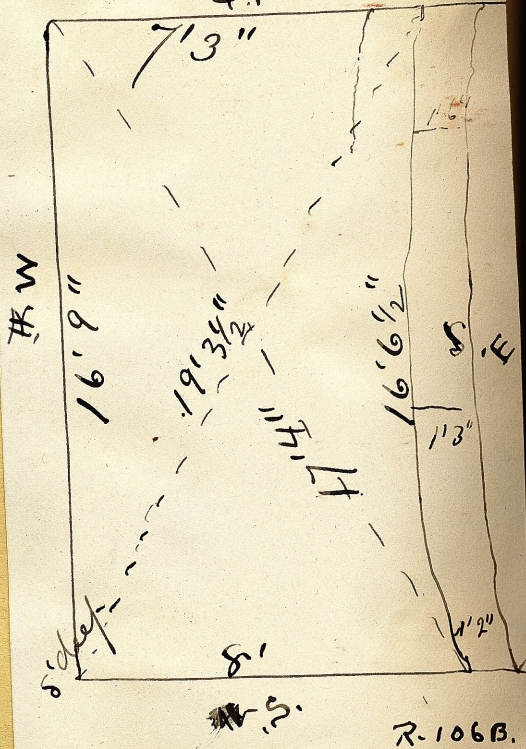
R-105.





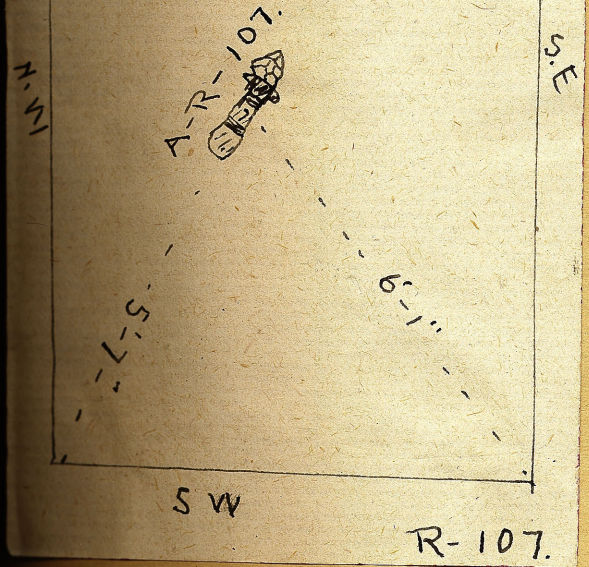


R # 1066.
S.N.



NE

Thin stone knife
A-R-107 was resting
on the floor
level of the
upper Room.



Width of Bench 1 ft. ht. 2'6"

NE

This stone knife
A-R-107 was resting
on the floor
level of the
upper Room.



S.E.

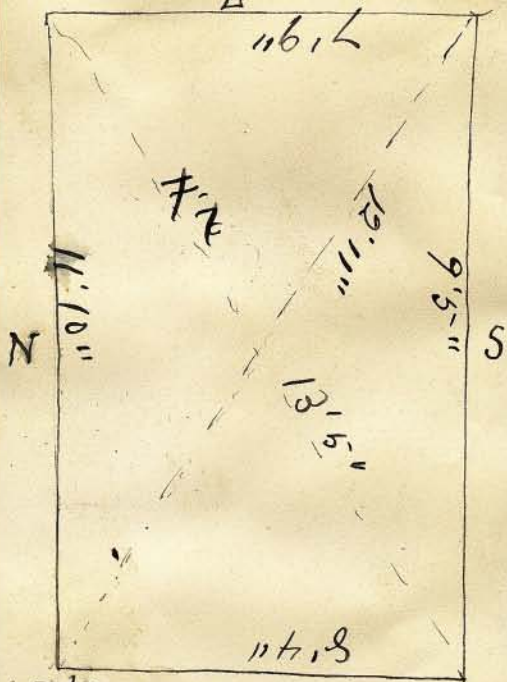
5'-7"
6'-1"

SW

R-107.

R # 107.107

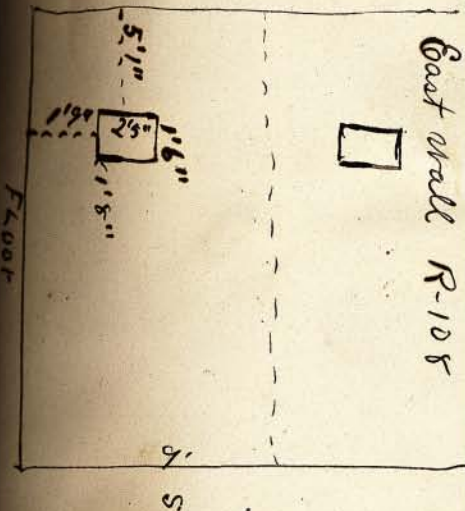
E



M. Mack 12
knife

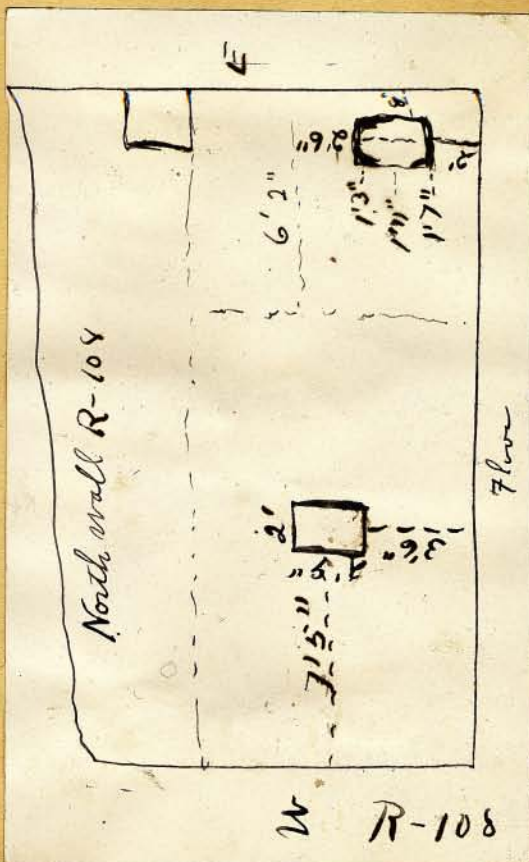
R-#107.

N

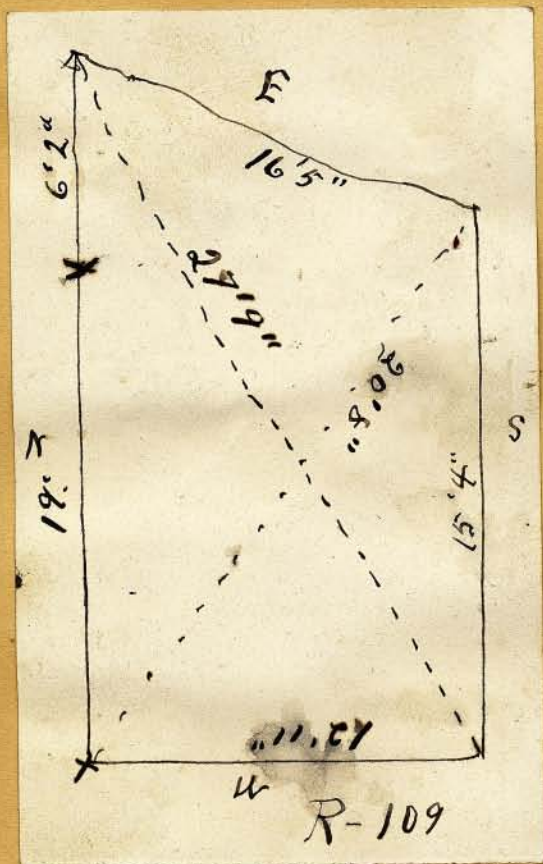
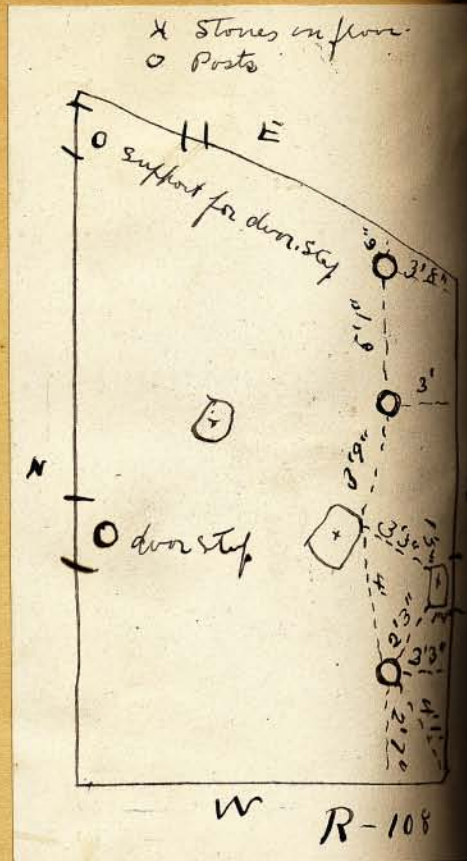
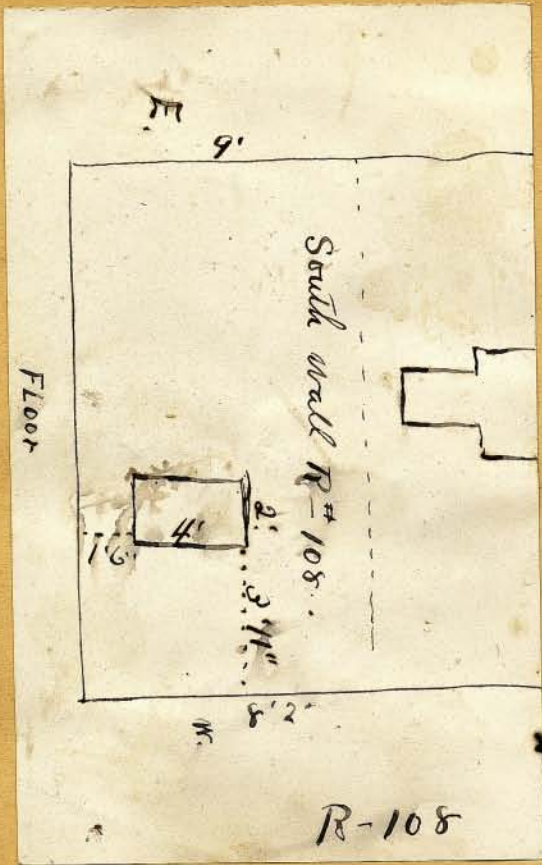


R-#108

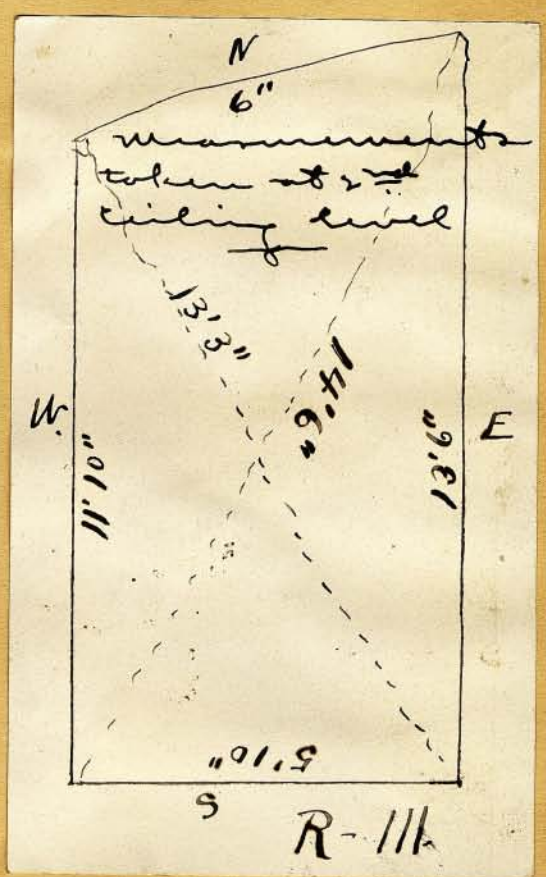
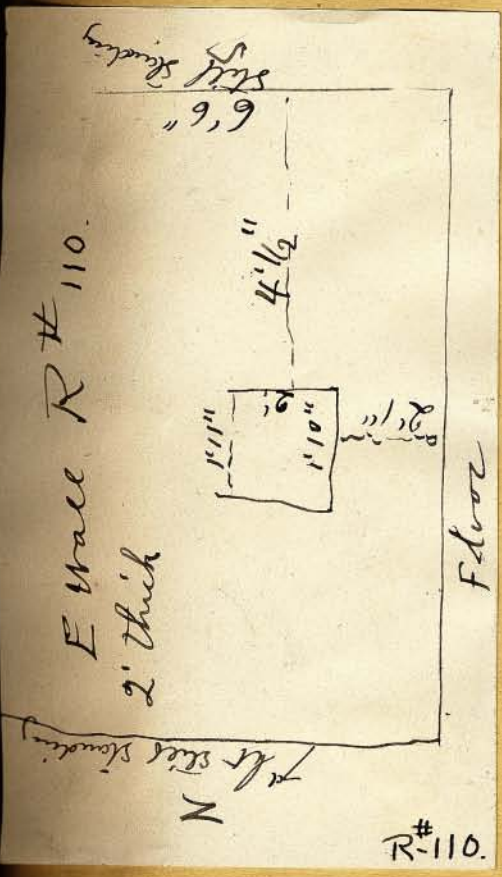
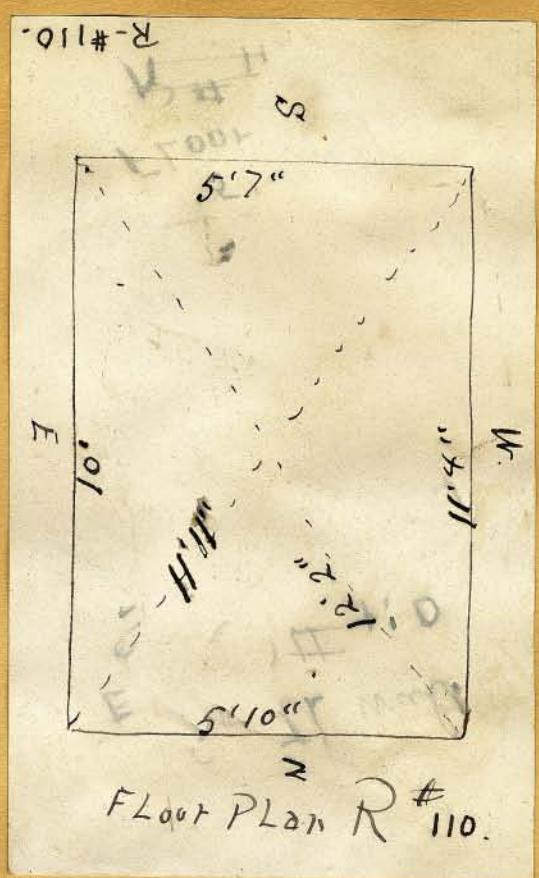
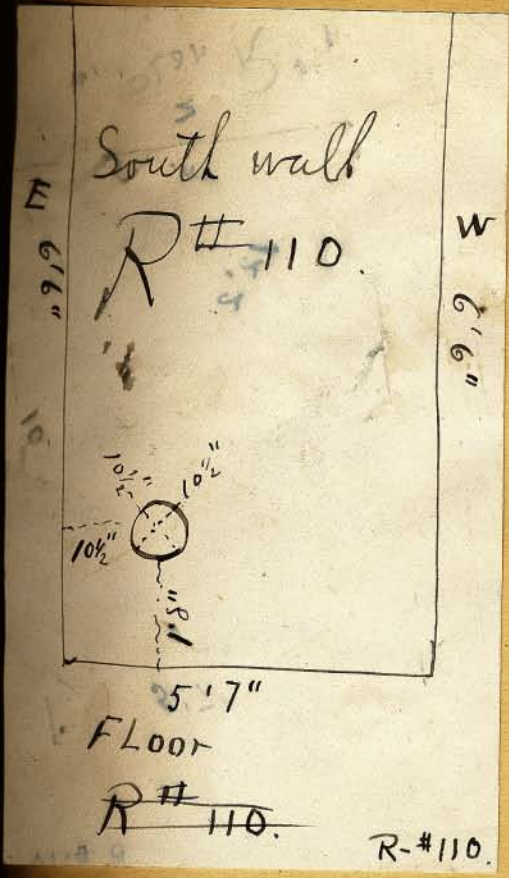
E



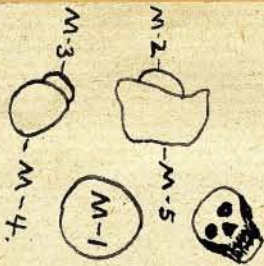
W R-108



Human Bones (vertebrae)
were found in the
general material
from R-109,
This room has not
been completed.



1898.

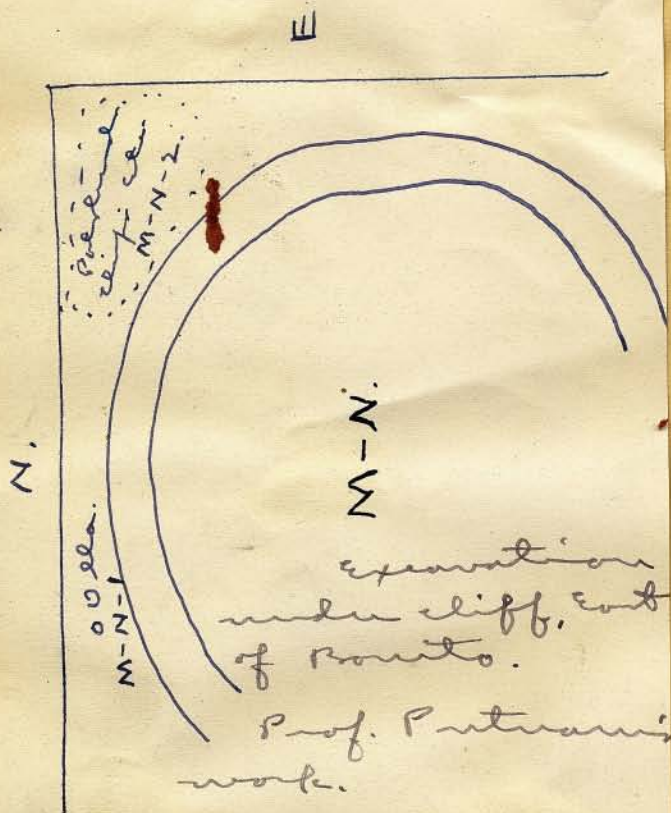


These bowls and
pitcher were found
on the mesa, south of
Chaco Cañon and
some distance S.E. of
Pueblo Bonito.

They were dug out
of an old burial
mound and the
above positions are
the ones given by
the Indian that dug
them.

- M-1 - is a Rare Red. Cer. Bowl
- M-2 - " " 4 Handed Bowl
- M-3 - " " Pitcher
- M-4 - " " Stone one and
was found on M-3.
- M-5 - " " " of Pottery
dug out M-2.

All the material
was found O-B. came from
Mr. Brock. The speci-
mens were found O-B-B.
were taken by him
from Pueblo Bonito
during the winter of
1897-98.



M-N-1.
M-N-2.

Shall from TR #96. H 7594.
A-R #90.

This shell is called
by the Navajos
E-er-er-did-er-er.

From the same place
as the other shells
found at Pueblo Bonito
during the winter of
1897-98.

Bear Prunella ^H
7682

just as found in
the W. central part
of R-92 on the floor.
Had probably been
tried to the ceiling.

R-92

material from the
Floor of R-92.

all the material
marked X. came from
the main floor of the
room the other materi-
al is from a layer about
6" to 1' above it. separated by
a stratum of sand. the upper
material not from the floor above

R-92

Bear Feet and
claw from the
floor of R-92. X.
note the hair on
the feet - the same
color as the man.

R-92

specimens from
the floor of R-92.

note the green Bear
Leaves - the human
hair and the bear
over bushes.
also Turkey Droppings.

R-92

52

8923 to ^H 8939

Found on floor over
the large open room
east of R. # ~~3~~.

These specimens were
found by Richard while
taking out timber before
my arrival.

The timber was for
the new store.

E. of
R-~~3~~ 3.