

COLLECTION: Papers of Neil Judd at the National Anthropological Archives

**CDI
ACCESSION
NUMBER:** 000164

ERRATA: None noted.

COMMENTS: Handwritten and difficult to read in some places.

CITATION: Judd, Neil Merton
N.D. Notes on Burials at Pueblo Bonito. In Papers of Neil M. Judd, Box 6, National Anthropological Archives, Smithsonian Institution, Washington, D. C.



Burials

puerto of east-central Ariz.
- extended burial.

extended @ Navituk

lamdoid flattening -

A skeletal series from Chaco
Canyon. by Carroll T. Riley
in El Palacio, vol. 6, No. 5,
pp. 156-8. May, 1957.

Parts of 17 adult skels.
from several Chaco small-
house sites (Bc. 51, 53, & 59)
& now in storerooms of
Univ. of N. Mex. & U. of Chicago
8 males, 9 females (but
sex of 5 is uncertain)

Burials

Pepper, 1920 - p. 376 (summary)

"The inconsequential number of bodies found in (PB) naturally prompts the question as to the general cemetery wherein were buried the hundreds who must have died there. From the character of the deposits in the series of burial rooms, of which Rooms 32 & 33 were a part, & fr. the accompaniments with the bodies, it is evident that these were members of the priesthood or, at least, people of great importance in the life of the people. Buried with such great stores of treasure, it is but natural to suppose that they were placed in a position secure fr. the possibility of defilement or of theft."

PB Burial Rooms (Pepper, 1920)

Total burials

- p. 138 ✓ R. 32 ① disturbed burial
(1st story, under R. 52)
- 163 ✓ R. 33 ⑭ "Burial room" (1st story of R. 58)
12 above board floor; 2 below floor
- 210 ✓ R. 53 ② (1 of 2 R's worked by Moorhead)
skullless adult? & head of child.
- 216 ✓ R. 56 ② } (1st story under R. 63) 2 below floor
Moorhead } 2 subfloor burials
- 217 ✓ R. 56 ② } (1st story under R. 63) 2 below floor
Moorhead } 2 subfloor burials
- 223 ✓ R. 61 ① } frags only (these fr. nearby)
rooms?
- 264 ✓ R. 79 ① subfloor child burial
- 267 ✓ R. 80 ①? misc. bones "fallen from one of
the upper rooms"

found by Pepper 20 5

" " Moorhead 4 ?

22

Summary

R. 32 apparently held
18 ~~in~~ inches \pm of blown sand
when the 1 burial was
interred since it & most
of obj'ts Pep. describes
were found @ approx.

sill level (12" above floor)

(p. 143 - "over 300" sticks fr. NW (co.)
37 $\frac{1}{2}$ crem, sticks &

81 ^{tipped} arrows standing in NW
cor. were apparently indepen-

dent fr. burial; had been
stored in room before burial,
apparently standing on ~~floor~~ 18" level

On p. 138 Pep says vertebral
column lay "6 inches above the
level of the western doorway";
thus burial made on about
18" accumulated sand.

On p. 129, "many of the sticks
"protruded over a foot above the
surface." Longest is 3'8 $\frac{3}{4}$ "

NW
on 18"
level

p. 376

In initial survey, Pep thought mounds on S. side of canyon might be PB burial cemetery but soon learned they belonged to nearby house groups.

p. 26

Pep first tested (PB) refuse mounds for burials. Then excavated & mapped burials in 2 mounds on S. side @ base of mesa. (see pp. 339-351 - reports & describes 30 skeletons & accompanying artifacts.)

Burial Room 32

(Pepper, 1920)

P. 129

When S. door^{was} opened "a wall of drifted sand was encountered." Sand nearly to ceiling ^{@ E. end; and} drifted in fr. E. Some of "ceremonial sticks" protruded over a foot above the sand. P. 163 - W. door - 21" w. x 2'9" sill 12" h.

W. door "almost filled by sand."

Beams cracked thru middle E-W supporting posts & beams @ N.

Pepper entered thru ^{locked} S. door from R. 28.

P. 134

"A number of human ribs found in SW corner "mixed with frags of wooden inlays & other objects buried with the body."

Other bones scattered nearby, presumably @ level of S. sill.

Various vessels, 1 metal, etc, @ same level ±.

P. 137

12" W. of S. door sand layers total 13" thick; get thicker toward E. wall - "the inflow of sand was fr. the E."

P. 139

Many of vessels had dotted rims - Chaco-S.J. ? or M.V.

Burial - R. 32

p. 138 - Part of vertebral column & 1
pelvis, part of disarticulated
skel. in SW. corner "the pelvis
being ----- 6 inches above the level
of the western doorway." 8 sticks
pointed @ lower end, charred on top,
~~upright in sand~~ @ R. of body -
apparently "stuck into the ----- sand
@ short intervals --- as torches."
Scattered about in sand, 6 other
res. with "squared ends." Burned
cloth about bones trailed into W. door.

about 18"
above floor

p. 139 More spec. described @
or near sill level of W.
& N. doors.

p. 140 - Ceram. sticks stacked in
NW. corner, part covered by
p. 143 sand mostly decayed. About
375 in all.

p. 159 "Standing ^{upright} against NW wall,
a quiver with over 80 arrows.

p. 161 Here, also, an elk antler club,
p. 162 3 braided yucca sandals, baskets,
cottonwood boards, etc.

p. 163 Floor about 1 ft. below door sills.

Room 53

(Pepper, 1920)

p. 210 | "This is one of the (2) rooms explored by the Moorehead party." S & W. 1st story doors. Latter opened into R. 56 (1st story of R. 63) "also worked by the Moorehead party."

M. excavated most of R. 53 but Pep found in debris @ S end "an almost complete skull." - skull missing; mandible in middle of room

"Near ^{the} E. wall the skull of a child was found, & near it was a deposit of turquoise & shell beads" - over 4000 disc turq. & about 30 shell beads or pendants."

"Nothing of importance" found in 3' test hole below floor level.

On floor, near middle E wall, 2 pitchers, a bowl, & s.s. jar cover; in SW quarter, fgs feather blanket & "2 end boards of baby carriers" + fgs cerem, sticks, wood slab, potsherds, animal bones.

p. 213

p. 217
cont.

"graves. This wall was evidently a part of an old room, for on the western side, under the western wall ---- there is another wall which extended the whole length of the western one. Its top was on the level with the floor -- its lower limits extended some feet below..."

Grave N. & S, of the old sub-floor cross wall. That @ N., 2 ft. deep; @ S., 3 ft. deep & bottom was composed of sticks. The sides were made of ⊕ boards -- probably covered with boards -- or matting.

N. grave = 7'3" l. x 4'9" w.

S. " = 6'7" l. x 3' w.

These figs. suggest extended burials.

p. 218

In debris, animal bones, 1 stone jar, part of a stone jar cover, & "a few potsherds."

~~Burials~~

- Architecture:

Room 56

(Pepper, 1920)

p. 216

(1st story of R. 63) Adjoins R. 53 on W. & connects with it by open door.

Two graves found by Mooshead party; "The bones were scattered throughout --- the northeastern part of the R. also a mass of human bones in the northwestern corner, so it was impossible to determine how many bodies had been buried here."

p. 217

Ceiling: 25" rough poles that ran fr. E. to W. - covered with brush & adobe floor of R. 63,

Jog in NW. cor. where wall had been torn out & replaced; "corner was rounded to the old wall site."

2 graves under floor "had been separated by a stone wall, the top of which was on the level of the floor, & extended fr. the E. to the W. wall. Its width @ the top was 1 foot 2 inches & extended --- below the lower level of the

(Pepper, 1920, p. 217)

Room 56

N. 6'7"

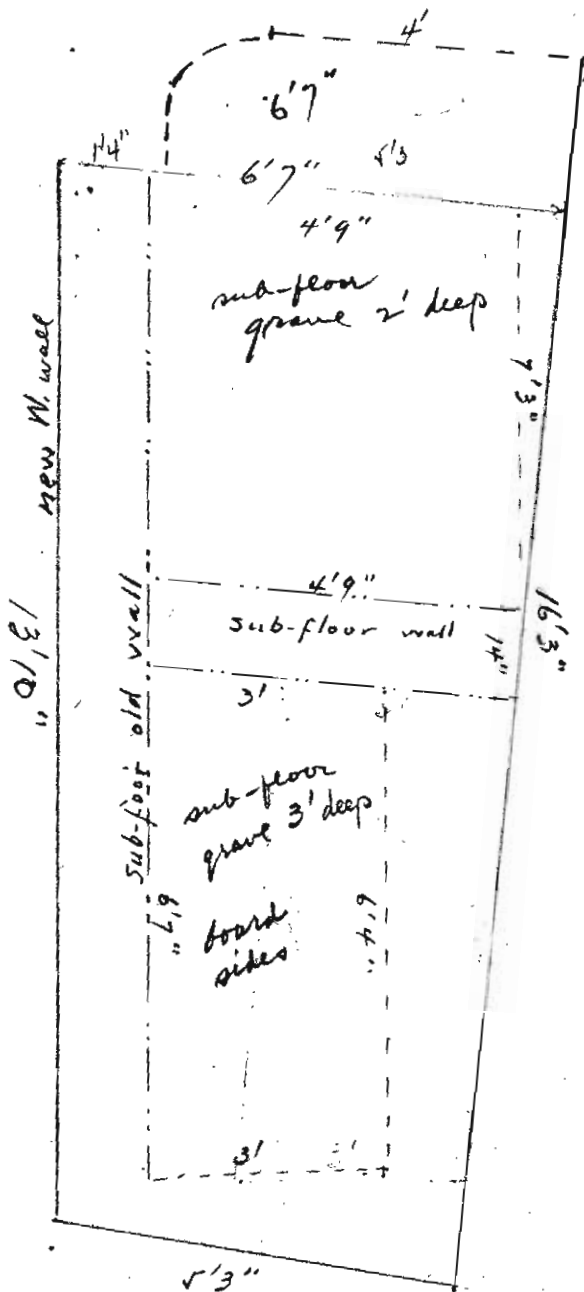
S. 5'3"

E. 16'3"

W 13'10"

av. dist. floor to ceiling beams,
√16"

Possible arrangement
fr. Pepper's description.



Room 61

(Pepper, 1920)

P. 222 N. of & connected with
R. 53 by open door.

P. 223

Spec. fr. debris near
floor include "fgts of a human
skull" scattered thru SE cor.
Pcs. of mandible & fgts of
cranium, "chained & blacked."
No evidence of fire in room.
"---- a few fgts of human
bones beside the skull"----
but not turned.

Also among debris; 2
stone slabs, grooved ax, stone
pestle, fgts silicified wood,
pebbles; 3 rabbit skels, animal
bones, 2 wooden inplts....."

Child burial R. 79

(Pepper, 1920, p. 264)

In R. 79 (at N6, ^{or E.} cor. kira 75)

"Below the floor level, in the center of the room, a skeleton of a child was found. With it were a (no) of pots/herds

"The burial of children below the floors of rooms seems to have been a custom among the people who inhabited this pueblo" — but,

I do not find in his text another ^{such} instance of a ^{subfloor} child burial in rooms. (S)

Wess (orig. # 923) child skull found in R. 287 about 4' above floor in ash/pit. Another in fireplace - R. 290 (?)

(Pepper, 1920)

Room 80

p. 264 In N.E. $\frac{1}{4}$. N. of σ
adjoining R. 69 just N.
of Kiva M.

"Near the W. wall σ @ a
depth of 3 ft. 6 in., a painted
stone mortar was found.

p. 267 "On the same level, but (E)
of the mortar, a number of
human bones were found.
They were scattered throughout
the debris σ had evidently
fallen fr one of the upper
rooms." Bones broken
 σ partly buried.

Very little else fr. the
general debris but, @
floor level, "a mass of
stone inlets..."

(Pep. doesn't give ceiling height)

Burials

F. T. Bickford, 1890

During 8 days spent among Chaco
ruins found no human remains
"except some frags of skulls in Pãasca
Blanca" — "in rubbish of a fallen
outer wall as if they had rolled
from within."

Burials

(Pepper, 1920)

p. 378 "There was no evidence of human bodies having been buried in rooms above the 1st floor & only portions of skeletons were in evidence in Rooms 61 & 80 which contained broken & charred bones."

~~Introduction~~
Introduction
under

Population

Size of Positions

Indicated height, men

" " , women

cited Obsept. VIII - Ms. p. 27c

- 1 of 2 footprints in floor of R. 244 measures
8 1/2" long x 3 3/4" across ball of foot,
(R. foot; print in NE. cor. of R. Foot is size 3 1/2, Triple E +
1 print in pavement 38" below floor
of R. 228. (Havers Neg. 285-26A) ruler
shows 8" long. No data on R. cards

T. 33 burials

Pepper, 1909.

<u>Skel. or Skull</u>			<u>mandible</u> <u>present</u>	
# 1	p. 210	on back; ^{partly} articulated	0	
	# 2	+ cervical vertebrae	0	
	3	decayed cloth on skull (many things beads & ornaments near 2-3)	0	
4	p. 211	appar. articulated	1	
5	p. 212	cloth on back; articulated	1	
	p. 214	6	disartic.; most of cervical vertebrae in place.	0
	p. 219	7	0	
		8	0	
		9	0	
	p. 220	10	1	
		11	0	
12		12	partly articulated skel.; body extended toward N.	0
<u>Under floor :</u>				
13		{ artic.; body extended to SW. many ornaments	1	
14		{ " " " about N-S much turquoise, other ornaments & other objects	1	

R.

Moorehead @ (PB)

"A narrative of explorations in New Mexico, Arizona, Indiana, etc." - Warren K. Moorehead Dept. of Archaeology, Bull. III, Phillips Acad., Andover, Mass., 1906.

p. 33

Left Farmington, N.H., in April, 1897, with 9 men. "It was not the purpose of Mr. Peabody's expedition to attempt a thoro exploration, but simply to make a typical collection in 3 weeks, & as a total of about 2000 specimens of various kinds were secured in that time, the object of the visitation was accomplished."

p. 34

Made surface collections @ "each ruin." "A small cemetery about a mile from the principal ruin was explored. At a depth of one half to one meter were found a number of skeletons & 40 or 50 jars, bowls, etc."

First story rooms @ (PB) "are quite dark" owing to fallen upper stories, drifted sand, "and other agencies." "The entire party [10 men] spent 2 or 3 days in these underground rooms, climbing fr. one into another & collecting pottery & other objects. Under the floor of the small room near the northwest corner of (PB) was found a splendidly preserved skeleton of a young woman wrapped in a large feather robe, which was originally 1.3 by 2 meters. Some of the pottery accompanying

Papers, 1920, pp. 210, 216
copy Moorehead
opened 2 forms
R. 53 + T. 56.

sent to R. 56

p. 34
P. cont.

"This burial is shown in fig. 13 [in next # above, fig. 13 is said to illustrate pottery from a small cemetery about a mile from PB] Unfortunately, of the feather robe nothing remains but the cords on which the feathers were strung. Sandals of both the cloth & fibre kind were collected, as well as some wooden objects & a 'throwing stick'."

Moorehead quotes from his camp letter to Mr. Peabody describing observations in PB: "We opened one or two rooms ---"

p. 38

"Selecting @ random a small room filled with rubbish, the workmen dug it out to a depth of ③ meters, down to a hard adobe floor."

p. 41

"In one of the underground rooms was found a double vase or jar of most singular pattern." This is double cylindrical vase, with measurements, figured as Fig. 10 which, on p. 34 is said to illustrate some of pottery from small cemetery about 1 mi. fr. PB.

p. 42

WKTH estimates Chaco population as "at least 10,000"

p. 50

"As our stay was brief, we made no remarkable discoveries."

Pepper, 1920, p. 210 says of Room 52 "This was one of the ② rooms explored by the Moorehead party." The other was R. 56.