

**COLLECTION:**

Papers of Frank H.H. Roberts at the National Anthropological Archives

**CDI  
ACCESSION  
NUMBER:**

000166

**ERRATA:****COMMENTS:**

Bc 53, Field Notes - 1940 Deacon, John. Kiva A mostly. Includes lots of drawings, dimensions, floor features, observations, and sherd counts.

**CITATION:**

Deacon, John.  
1940 Bc 53, Field Notes. In Papers of Frank H.H. Roberts, Box 8, National Anthropological Archives, Smithsonian Institution, Washington D.C.



Frank H.H. Roberts Jr.  
4851

Archaeological Sites

Chaco Canyon, NM  
Bc-53

Box 8

NATIONAL  
ANTHROPOLOGICAL ARCHIVES  
SMITHSONIAN INSTITUTION

F.H. H. Roberts  
Papers

1947-48

Chaco Canyon, N. Mex., D-55 site

Field notes

1940

Duncan, John

★ SHAW'S ★

No. S 5611

John C. Deacon

Stanford Univ.

A Product of WILSON-JONES CO., U. S. A.

August 5, 1940

Preliminary work begun. Site cleaned of brush and rocks, and drainage trench dug. Trench also dug on west to find extent of drainage.

trench I

August 6, 1940

Trench D dug towards ~~S~~ N.W. corner. 3 feet below the surface and 3 feet from <sup>west</sup> corner a wall was located. This required the digging of trench I parallel with the wall. (west to east)

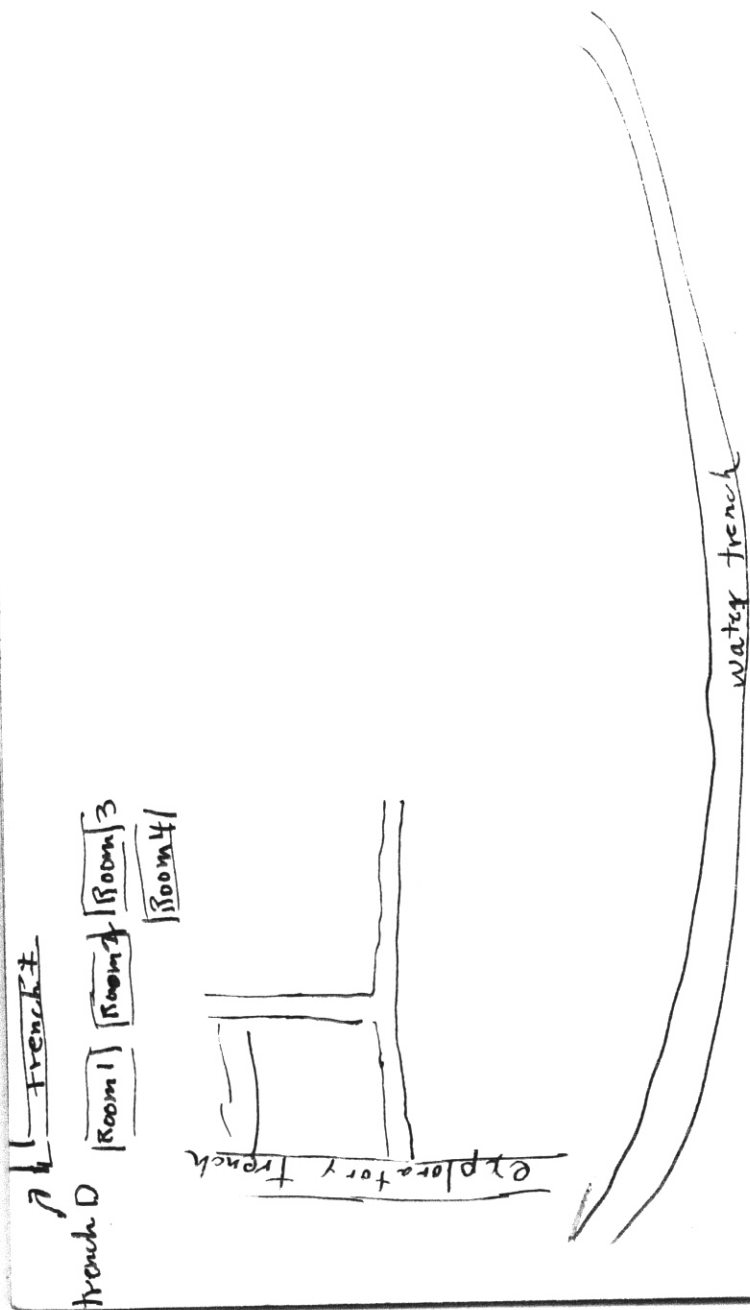
Finds:

Bone - small animal bone found in trench I -

Sherds - about 50 mostly Gallup, Escavada, and Epiberont, found in trench I.

Other work -

[Outlining of walls]



Trench I  
Stone

August 7, 1940

Hammer - Trench I

catalogue  
No. BC53  $\frac{20}{5}$

51" below surface

5" from north wall no 1 w  
at NW corner

14" long (35 cm)

$6\frac{1}{2}$ " wide (18 cm)

stone slab at base of wall  
(support)

140 sherds found

animal bones

frequency of reed marked plaster  
in trench I

other work

outlining of walls continued  
and rooms located and numbered  
manos, axes, and a pot removed

Trench D dug to second west wall  
wall did not extend down  
to first wall. It was  
of later period.

Artifacts

BC53  $\frac{20}{3}$

BC53  $\frac{20}{4}$

Signite ornament (Fragment)  
East end of Trench I

Pot cover (Fragment)

East end Trench I  $\leftarrow$  4' 2" from surface

August 8, 1940

outer wall  $29\frac{1}{2}$ " high at corner  
top 33 inches from surface

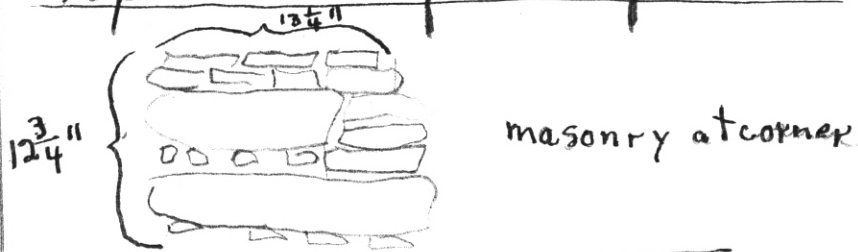
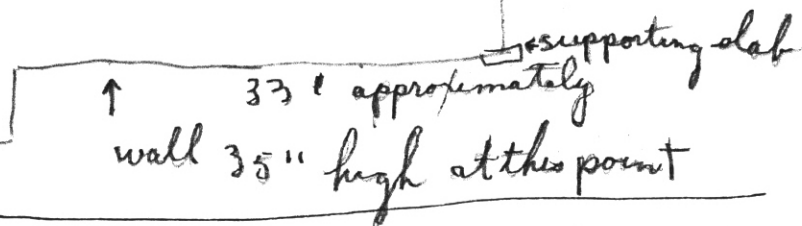


Diagram  
of outer  
west wall



Tried to establish wall parallel  
to and in between walls one and  
two on the west. Finally dug  
out entire area finding a moderate  
amount of sherds. (115)

Pot cover - smooth and broken

Catalogue  
No. BC53  $\frac{20}{10}$

7.6 cm long 7.4 wide  
North side of east ~~into~~ west  
wall of upper pueblo  
corner of rooms 3 & 6  
2 ft down in fill

August 9, 1940

Kiva A -

Level #

$37\frac{1}{2}$ " top wall to ~~bottom~~ bottom  
of level 1

$22\frac{3}{4}$ " top wall <sup>of Kiva</sup> to bottom level 1

Sherds very scarce (29)

Kiva wall -  
masonry of whitish blocks - no  
spalls.  
average size of blocks 10" by 4"

Artifacts - Awl sharpener (fragment)  
material sandstone  
4 cm by  $4\frac{1}{2}$  cm.

Locus -  $22\frac{3}{4}$ " below top of wall  
surrounding ~~Kiva~~  
2' from north end of Kiva

The rock was in partial or  
beginning stages of decomposition

Kiva A

August 10, 1940

Level 1  $22\frac{3}{4}$ "

Level 2  $9\frac{1}{4}$ " (32" total)

L2 — Level 2 was excavated.

Level 2 was similar to level 1 in the amount of large rocks in the fill.

Sherds — very scarce.

Bones — several small bones

Artifacts —

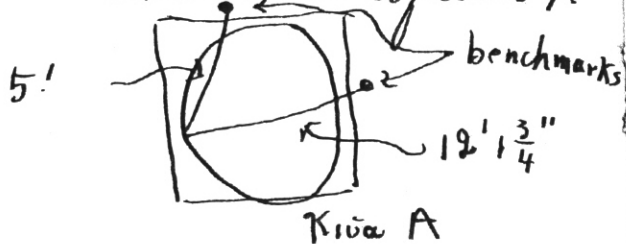
Arrowhead — material obsidian  
Locus — level 2 (broken)

Vertical ~~Horizontal~~ — 32" from top Kiva wall

Horizontal — 7" from wall ~~west~~ <sup>west</sup> side of Kiva.

5' from south corner of rooms 1 and 2 (Benchmark)

$12'1\frac{3}{4}$ " from benchmarks on west wall of room 4.



40 mm by 23 mm  
6 mm thick

Catalogue no. BC53  $\frac{22}{11}$

August 12, 1940

Level 3 — excavated

— 12 inches (total 44")

Sherds — scarce

Bones — 1 or 2 animal bones found.

Reed-marked plaster — 1 or 2 examples

~~to~~ charcoal patch about a foot and a half wide found at depth of 44 inches at bottom of level 3.

Fill — was loose dirt with a relatively small amount of rocks in it. Fill under level 3 seemed to be a yellowish clay and more rocky.

Profile of Kiva is at the south end.

Walls are fairly even with the masonry being in worse condition at the east side.

Bulge in wall at north end resembles a chimney.

Worked sherd —

3.3 cm long — 3 cm wide — Type McElmo  
Catalogue No. BC53  $\frac{10}{7}$

← profile

Kiva A

August 16, 1940

Level 4

9 inches < 44" to 53" from top  
of north end of  
Kiva wall.

The measurement was  
taken from highest  
point on wall >

Fill - It was very rocky  
on the eastern side of Kiva in  
this level. Mostly building stones.



Kiva A < Level 4 >

Sherds - very scarce < 46 >

Reed marked plaster - several  
good specimens found.

Artifacts -

Bone Awl -

Vertical locus

Level 4

54  $\frac{3}{4}$ " below Benchmark  
A

Horizontal locus

95  $\frac{1}{2}$ " from B. Mark A

155" from point A'

15" from wall.

~~Bone awl~~  
~~Vertical locus~~

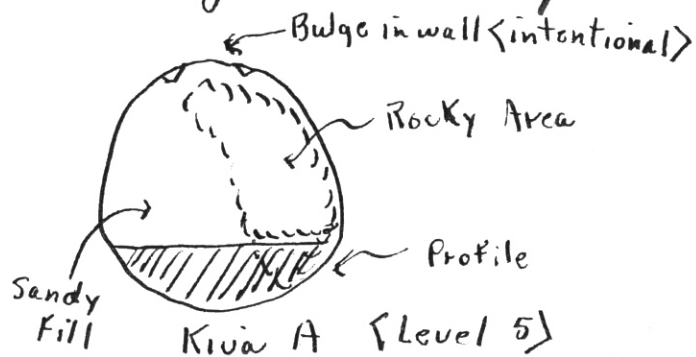
~~Level 4~~  
Charcoal - layer a charcoal  
found at bottom of Level 4  
in middle of Kiva. Thick-  
ness was from  $\frac{1}{2}$ " to 1"

Kiva A

August 17, 1940

Level 5  
12 inches (53" to 65" from top of Kiva wall)

Fill - was more rocky than level 4. Mostly on east side of Kiva



Shards - still scarce but a little more common

Artifacts - catalogue no. <sup>BC</sup>53 <sup>30</sup>/<sub>26</sub>

Bone Awl

Vertical locus

Level 4

58" below benchmark A

Horizontal locus

41" to benchmark A

83" to point A' on wall of room 4

13" from Kiva wall.

7.2 cm by 1 cm

Bone awl - imperfect "broken" vertical locus

Level 5

5'9" below benchmark A

Horizontal locus

8'4" from Benchmark A

6'7 $\frac{1}{2}$ " from point A' on wall of room 4

3'9" from wall of Kiva

13.5 cm by 2.5 cm

Bone awl

vertical locus

Level 5

5'5" below benchmark A

horizontal locus

8'10 $\frac{1}{2}$ " from benchmark A

4'5 $\frac{3}{4}$ " from point A' on wall of room 4

Kiva Bench -

Located in level 5

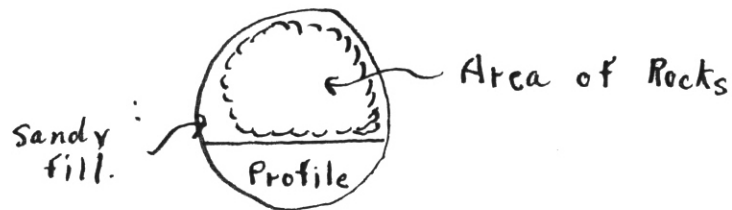
Level 6 was begun before the bench was exposed.

Kiva A

August 19, 1940

Level 6 (65" to 84 $\frac{3}{4}$ ") (from top Kiva wall)

Fill - Extremely rocky -  
apparently construction blocks



Sherds - very scarce

August 24, 1940

Kiva A

Interim - Kiva dug to within few inches of floor. Sherds and other material was thrown out. Profile was reduced without stratification taken.

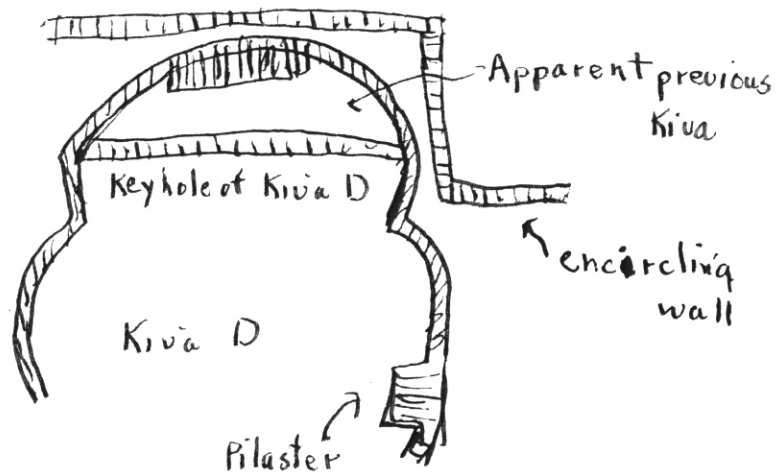
Work done on this day:

Remaining fill taken off of keyhole end to Kiva. Very much broken floor was tentatively located. Edges of floor was established. A mass of plaster and a few rocks were on floor of keyhole part of Kiva. Sherds were scattered and extremely scarce.

Kiva D

August 26, 1940

Establishment of walls at south end of Kiva D



Fill - charcoal mixed clay - a few sherds.

Trench circa Kiva A  
sherds - scarce

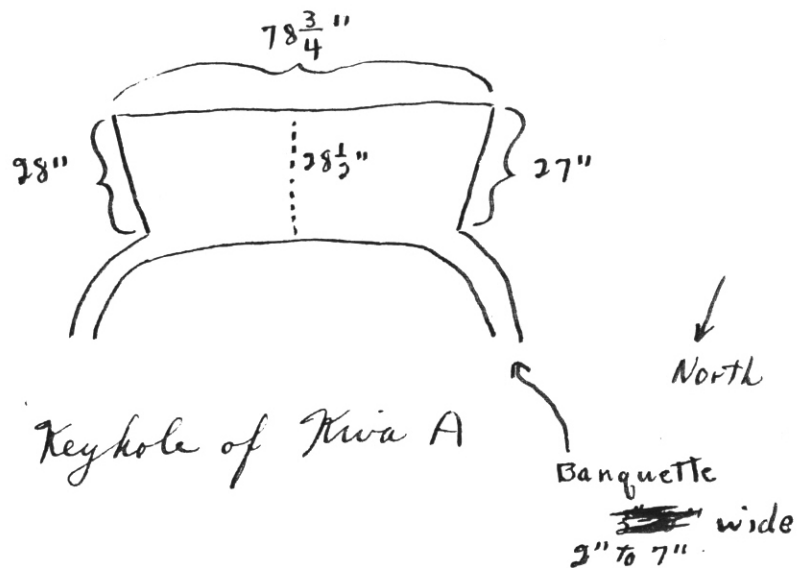
Pot cover - smoothed & broken sandstone

7.1 cm by 8 cm  
1 cm thick

catalogue no. BC 53  $\frac{20}{31}$

August 27, 1940

~~Kiva~~ Kiva A



Floor of main part of Kiva.

105" below highest point on  
~~top~~ north wall of Kiva

45" from banquette to floor.

110  $\frac{1}{2}$ " below benchmark A

Kiva A

August 28, 1940

Floor of Kiva -

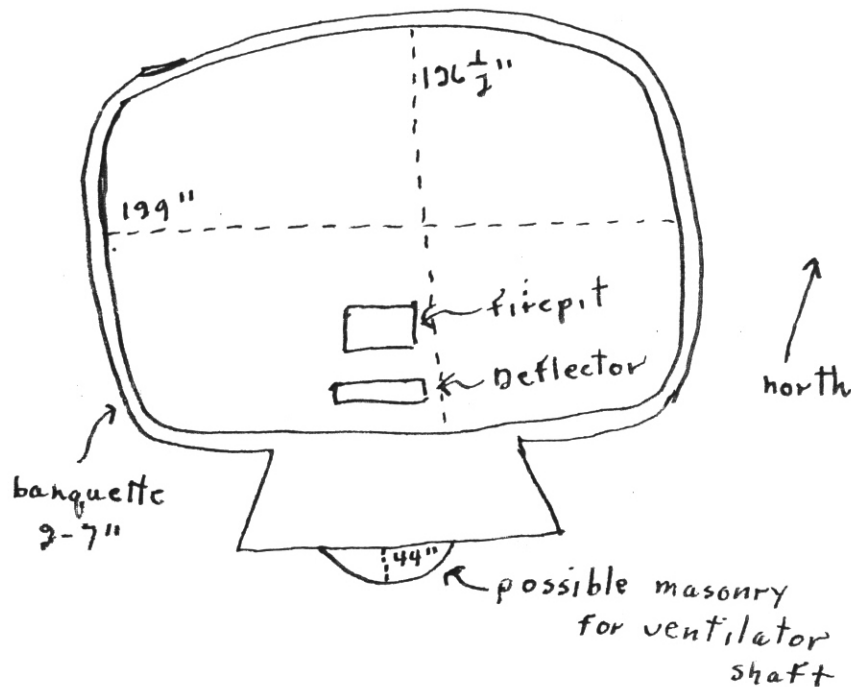
Trowling of floor at 105" from  
highest point on Kiva floor

A piece of wood was found in north  
part of room and fireplace was  
located at south central region

Sherds - were scarce

August 29, 1940

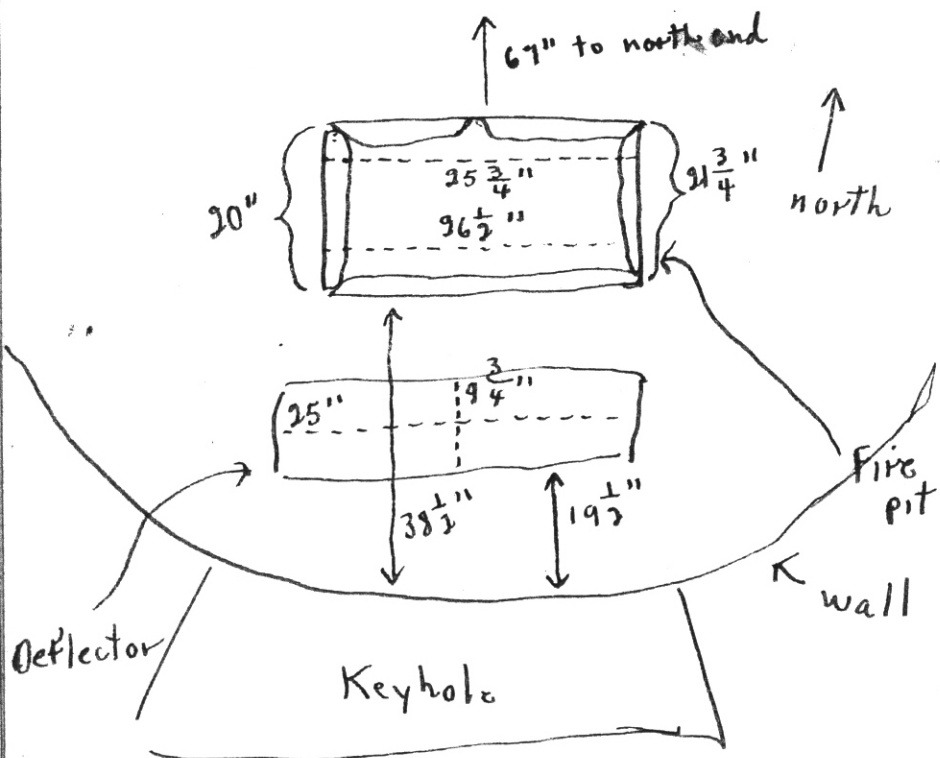
Kiva A



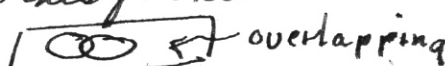
Kiva A

Fire pit & Deflector

a sandy loam (loamy sand) was found beneath the charcoal



Charcoal — rings of reddish material much like decomposed rock were found in the fire pit in this fashion



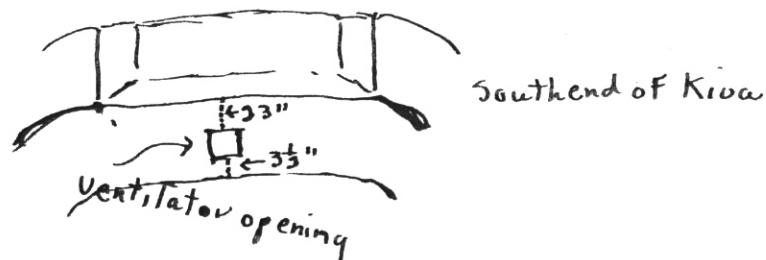
overlapping

Kiva A

Charcoal (continued)

The charcoal continued to a depth of an average of about  $8\frac{1}{2}$ " below the top of pit. Underneath was a sandy loam.

Ventilator — Keyhole

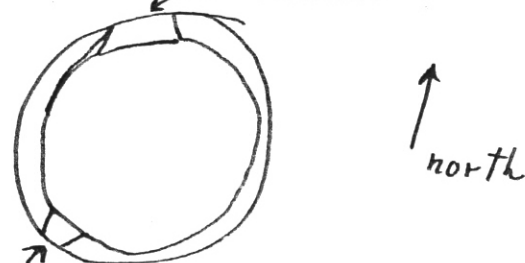


Opening for ventilator was 16" by 14" wide

Pilasters (so-called)

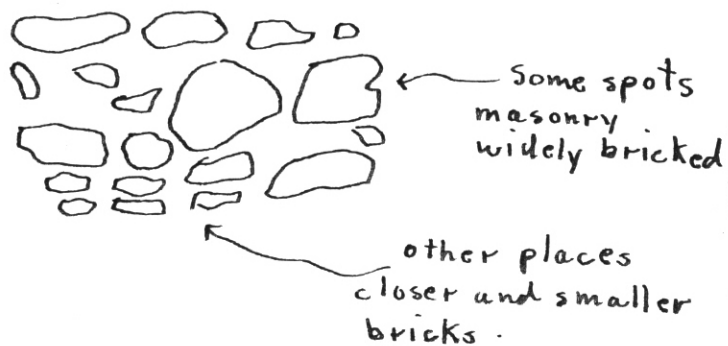
one at north end of Kiva and another at South western side

They start near top of wall and bulge out to the width of the bench



Pilaster 2

## Wall &amp; Masonry



Well is plastered on an average of 36" above banquette.

## Banquette -

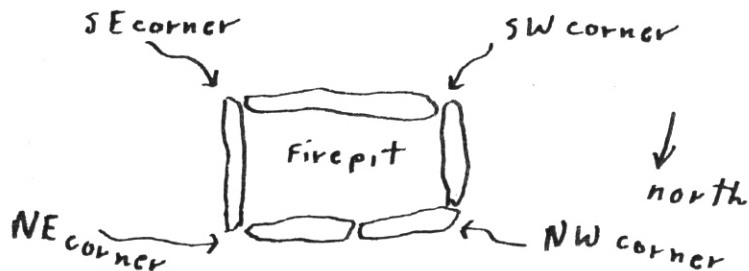
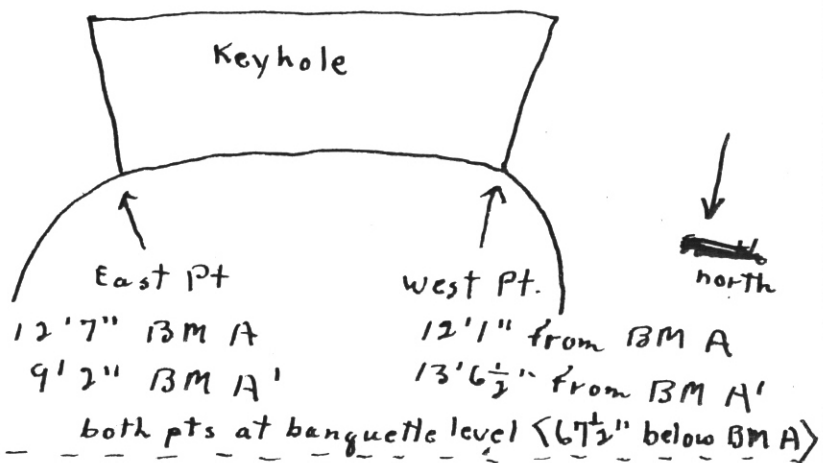
Average width - 2" to 7"

Average distance from top wall 60"

Average distance to floor 43"

~~47~~ 62 1/2" from highest pt. on Kiva wall at ~~south~~ north end.

## Location of Firepit (from benchmark)



Horizontal positions of corners. (firepit)

SE corner - 60 1/2" from west point  
39" from east point

NE corner - 74" from west point  
60" from east point

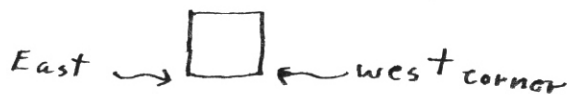
SW corner -  $47\frac{1}{4}$ " to west point  
57" to east point

NW corner - 63" to west point  
71" to east point

Vertical locus

SE corner - 46" below west point  
SW " 46 $\frac{3}{4}$ " " " "  
NE " 47 $\frac{1}{2}$ " " " "  
NW " 46" " " "

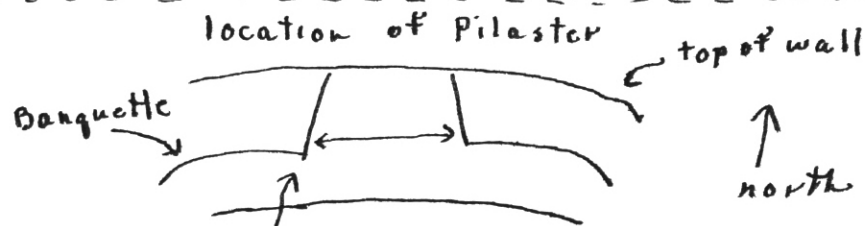
Ventilator opening (2 lower corners)



East corner -  $44\frac{3}{4}$ " from ~~east~~ west pt.  
25" from east pt.

West corner -  $27\frac{3}{4}$ " from west pt.  
39" from east pt.

$3\frac{1}{2}$ " from base (floor) } both pts  
39" from banquette



Horizontal locus -  $14\frac{1}{2}$ " from BMA  
121" from BM A'

banquette  $67\frac{1}{2}$ " below BM A

Stratigraphy

Kiva A

Sherds

Level 1 & 2

depth 32" (Highest pt. on north Kiva wall used as benchmark)

Sherds scarce

pottery types:

Escavada	7	24.17
Gallup	9	31.08
Exuberant	10	34.53
McElmo	3	10.36
	29	100.14

Level 3

depth 32" to 44"  
sherds scarce

pottery types:

Red Mesa	1	2.63
Escavada	9	23.67
Shaco B. on W.	1	2.63
Gallup	14	35.82
Exuberant	10	26.30
McElmo	3	7.89
	38	98.94

Kwa A. 1

Level 4

Depth 44" to 53"

sherds scarce

Escavada	2	4.32
Red Mesa	1	2.17
Gallup	19	41.23
Epuberant	20	43.20
McElmo	3	6.49
Forestdale	1	2.17
	<u>46</u>	<u>99.58</u>

Level 5

Depth 53" to 65"

sherds scarce

pottery types:

Escavada	8	12.08
Upper Gila corrugated	1	1.51
Gallup	16	24.16
Epuberant	32	48.32
Deadman's Bon R.	1	1.51
McElmo	7	10.51
Shaco corrugated	1	1.51
	<u>66</u>	<u>99.66</u>

Kiva A

Level 6

Depth 65" to 85"

sherds moderate

pottery types:

Red Mesa	1	2
Gallup	14	28
Epuberant	30	60
Escavada	1	2
McElmo	3	6
Forestdale	1	2
	<u>50</u>	<u>100</u>

Floor level (not classified yet)

~~Trench A~~  
Trench SW of Kiwa A

depth 1" to 12"

sherds moderate

pottery types:

Gallup	19	34.58
Exuberant	19	34.58
Escavada	11	20.02
Red Mesa	4	7.82
Abajo	1	1.82
McElmo	1	1.82
	<u>55</u>	<u>100.64</u>

Trench circa Kiwa A

sherds scarce

pottery types:

Red Mesa	1	3.57
Forestdale	1	3.57
Escavada	5	17.85
Gallup	9	32.03
Exuberant	10	35.60
McElmo	2	7.14
	<u>28</u>	<u>99.76</u>