

**COLLECTION:** Chaco Archive

**CDI  
ACCESSION  
NUMBER:**

000650

**ERRATA:**

**COMMENTS:**

(C85956/VA2083) Typed Report/Student Paper on Burial Practices at (1941); Typed text, sketched plans and pottery sketches, handwritten table/inventory of burials at Bc 50, Bc 51, Bc 53.

**CITATION:**

Hitchcock, Virginia  
1941 Burial Customs of Bc 53. Chaco Archive No. C85956, NPS Chaco Culture NHP Museum Archive, University of New Mexico, Albuquerque.



VA 2083-1  
Reiler  
C85956

BURIAL CUSTOMS OF Bc53

by

Virginia Beth Hitcock

APR 19 1956  
U.S. DEPARTMENT OF THE INTERIOR  
BUREAU OF LAND MANAGEMENT

Introduction

Map of BC53

Descriptions of Burials

General Summary

Chart of BC53

Chart of Tseh So

Comparison of BC53 with Tseh So

Bibliography

Sketches of Pottery

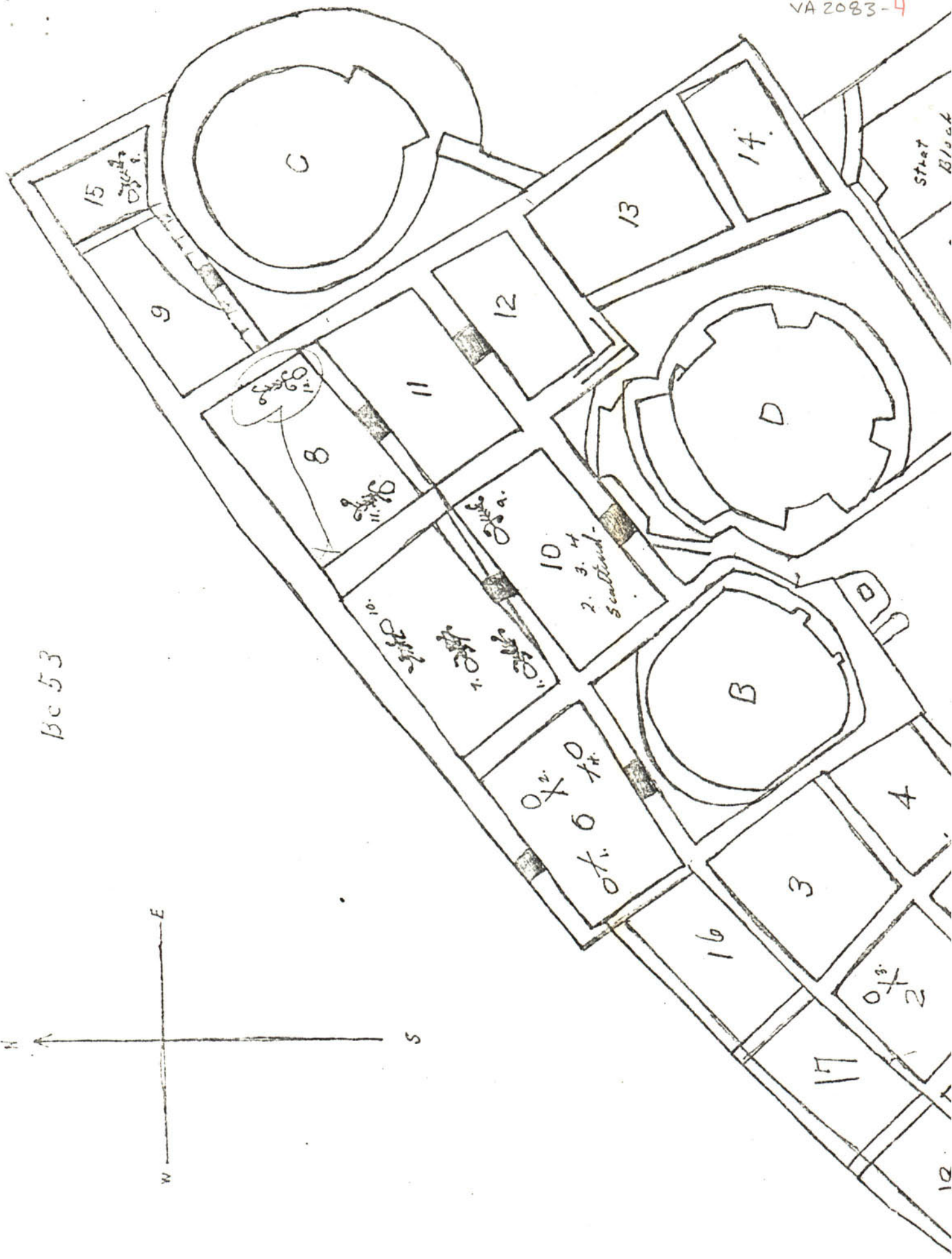
INTRODUCTION

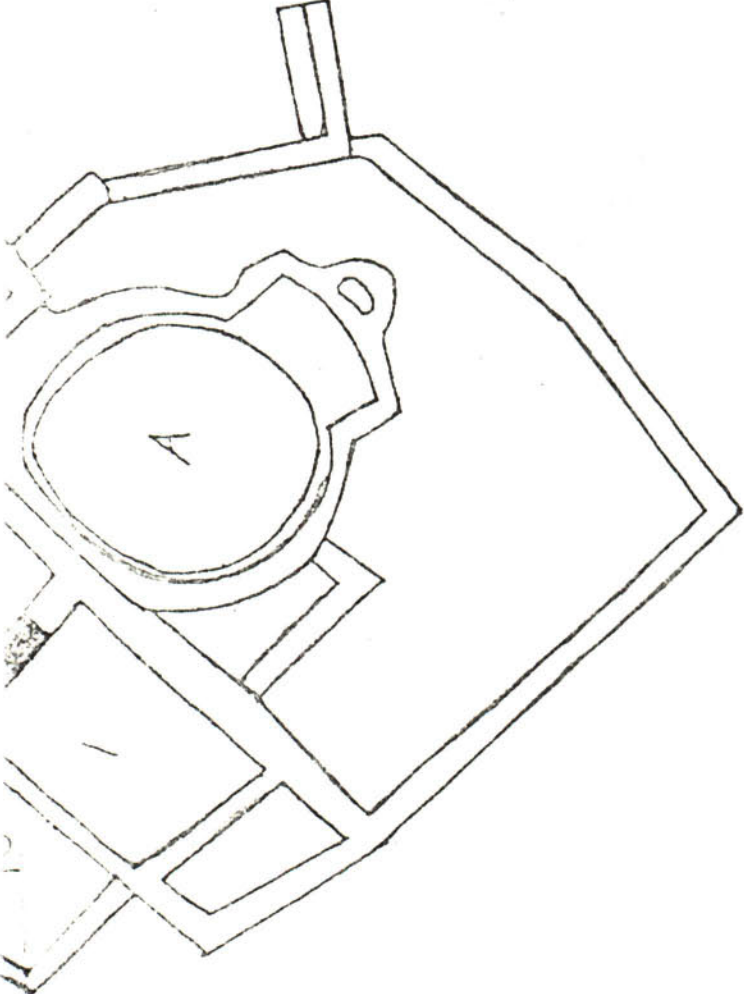
In writing this paper I have tried to give an accurate description of the burials found in the Chaco Canyon ruin, BC53, during the 1940 and 1941 summer field sessions. This report is not complete however, as a part of the 1940 material was unavailable. Also some overlapping in the numerical sequence of the catalogue cards between the two seasons tends to make the numbering and comparison a bit difficult. Nevertheless, the purpose of this paper is to describe the various recorded burials and compare them as to age, sex, accompanying artifacts and position, with those found in the Small House ruin, Mesa So.

V.B.H.

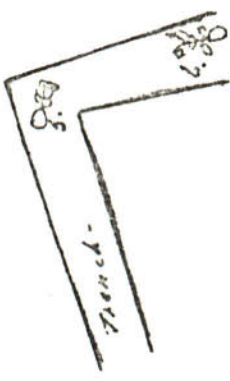
*[Faint handwritten notes and a large scribble are present at the bottom of the page.]*

Be 53





Legend.  
 O f e e e 2 Burials found in 1941.  
 1, 2, 3, etc. Rooms -  
 ABCD Nixas -  
 O X Burials found in 1940.



AE 20  
 AE 20 Stake

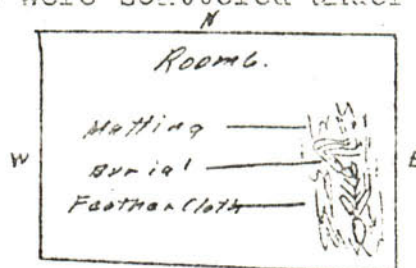
## DESCRIPTIONS OF BURIALS

1940

The first part of this paper deals with the actual descriptions and locations of the burials found in the ruin, 3055. There are records of the excavations of four burials for the season of 1940, and of twelve for the season of 1941.\*

The first burial found in this ruin was in room 6. The skeleton was lying on its left side and was completely flexed with the face turned upward. It was covered by a stone protection. The skeleton was in poor condition and was that of an adult female. Accompanying it were matting and leather cloth. Numerous potsherds were scattered under and around the burial.

Sketch of burial:

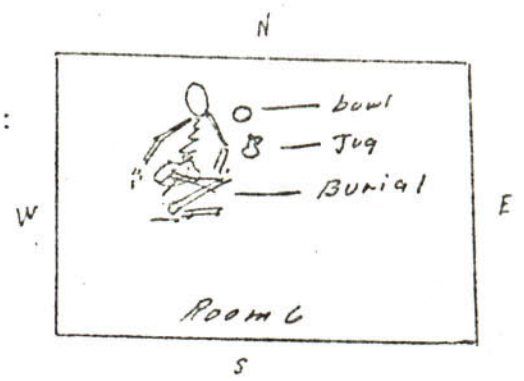


The second burial was also found in room 6. The skeleton was oriented north and south and facing upward. It was flexed at a right angle and covered by a stone protection. It was in good condition and was that of an infant. This burial was accompanied by basketry and two pots. One was Embarant corrugated, and the other was of Red Mesa B/W, and contained some seeds.

---

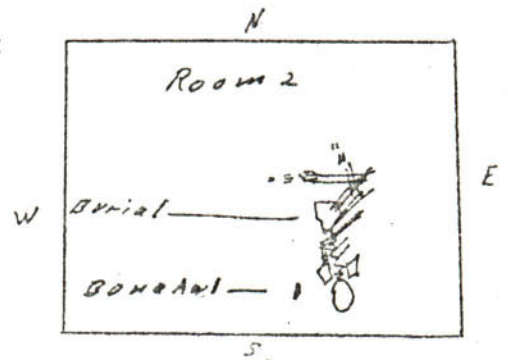
\*Others are said to have been found during the 1940 season, but if so, the records are missing.

Sketch of burial:



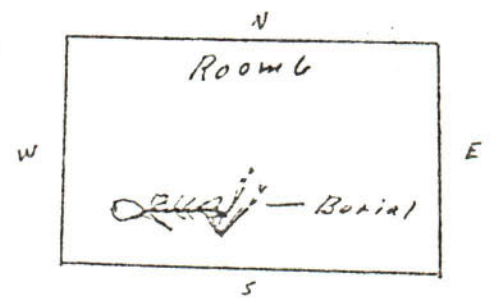
The third burial was discovered in room 2, on the floor level. This skeleton was oriented north and south, and facing east. It was flexed at a right angle and covered by a stone protection much the same as Burial 2. The skeleton was in good condition, having a natural color and was that of an adult male. It was accompanied by matting, potsherds, a bone awl, and seeds of cucurbita, moschata, piñon and maize.

Sketch of burial:



The fourth and last burial found in Bop3 during the 1940 field session was discovered in Room 6 on the floor level. The skeleton was oriented east and west and facing south. It also was a right angle flexion and covered by a stone protection. The skeleton was in fair condition, but the bones were somewhat scattered. It was that of a child of about five years of age. Outside of several potsherds, there was no accompanying material.

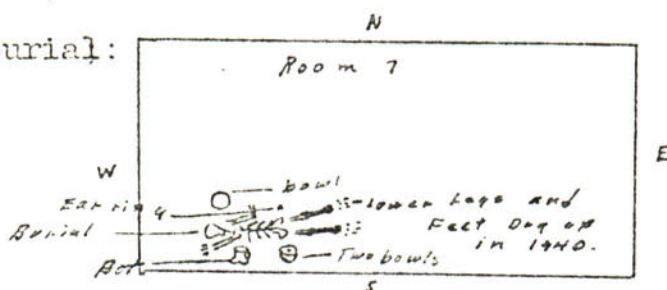
Sketch of burial:



## BURIALS REMOVED DURING 1941 SEASON.

The first burial found during the 1941 field session was in Room 7 below the floor level. The skeleton was oriented east and west, lying on its stomach, and facing the north. It was in fairly good condition and was buried in an extended position. It was that of a young female around 25 years of age. (rough guess) With the skeleton were found a small ear ring, made of poor turquoise and four pots, two of Puerco B/R and two of Escavada B/W.

Sketch of burial:



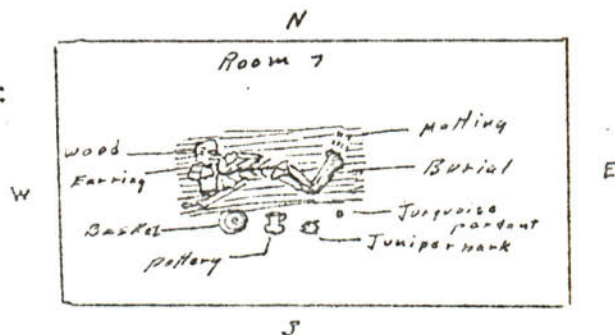
The next burials, 2, 3, and 4 were discovered in Room 10. These skeletons were scattered over the floor, obviously having been dumped as refuse into the room. They were not complete; however the bones were in fairly good condition. Found in the room with #1, was a Mesa verde B/W pot.

The fifth burial, though it can hardly be called a burial, was found in a trench south of the ruin proper. Only the cranium was present, but it was in fairly good condition. It was facing downward; however it had probably been disturbed, as the trench had been run through a dump.

Burial 6 was also found in the trench through the dump south of the ruin. It was an adult Male, in poor condition with various bones missing. It was oriented north and south and facing the east. The skeleton was flexed at a right angle. It was accompanied by several bone balls, and a small Chaco Corrugated pot.

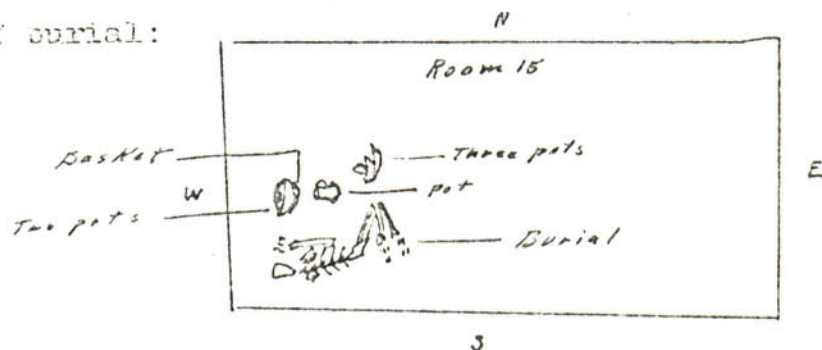
The seventh burial of the 1941 season was discovered in Room 7 below the floor level. The skeleton was oriented east and west and facing downward. It was flexed at a right angle, and was in very good condition. Under the skeleton was found reed matting very poorly preserved. Some pieces of juniper bark were found at the side. To the south side of the skeleton were found a small portion of coiled basketry in very bad shape, a small turquoise pendant, and a small Mesa Verde B/W jar. A turquoise ear ring was found in the mouth of the skeleton, and its head was resting on a pine block.

Sketch of burial:



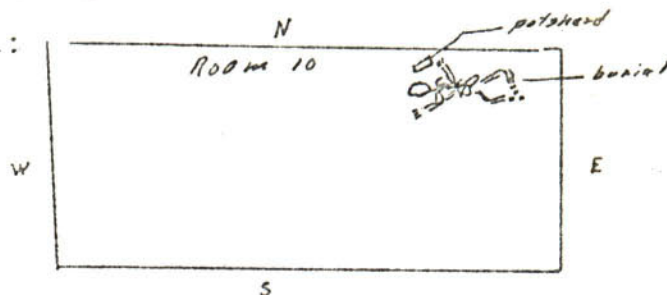
In Room 15 burial 8 was found. The skeleton was lying on its right side and face. It was oriented east and west and facing down, with the arms flexed under the body. The skeleton was that of a young male and was in a rather decomposed condition. Accompanying the skeleton were a small portion of basketry, six bowls, two of which were Escavada B/W, one Forestale Smudged, one Chaco Corrugated, one Puerco B/R and one Gallup B/W.

Sketch of burial:



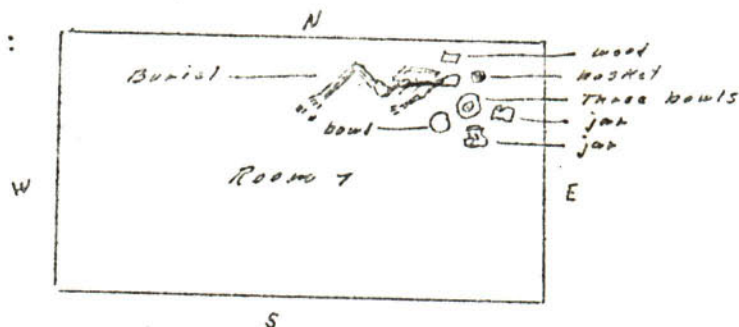
Burial 9 was an infant burial and was found in Room 10. The skeleton was in fair condition and was placed at a right angle flexion. It was oriented east and west and was lying on its stomach, with its face down. One large potsherd was the only material accompanying the burial.

Sketch of burial:



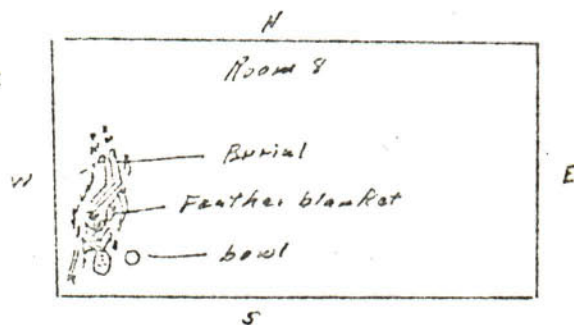
The tenth burial was found in Room 7 below the floor level. The skeleton was oriented east and west and facing upward. It was lying on its back with its knees flexed to the right, and was that of a young Male. Accompanying the burial were a piece of basketry, a block of wood, juniper matting under and over the skeleton, and six bowls, two Escavada B/W, one Mesa Verde B/W, one Forestdale Snudged, one Chaco Corrugated and one Upper Gila Corrugated.

Sketch of burial:



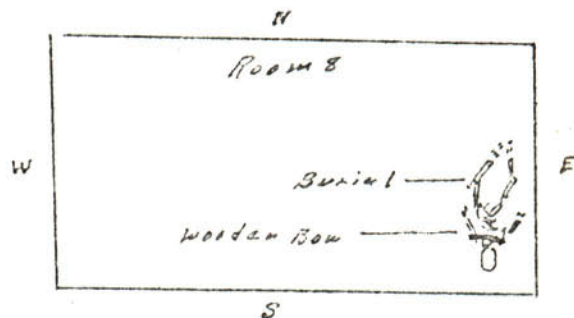
Burial 11 was found in Room 8 under the floor level. The skeleton was that of a Male of about twenty-five years of age. It was in good condition, and lying on its back with its knees flexed. It was oriented north and south and facing upwards. The body was wrapped in a feather blanket and a small Forestdale Snudged bowl accompanied it.

Sketch of burial:



The last burial to be found in 8033 was in Room 8. Burial 12 was an infant burial and in very good condition. The skeleton was lying on its back facing upward and was extended. Its orientation was north and south. The only accompanying artifact was a part of a wooden bow lying across the burial.

Sketch of burial:



## GENERAL SUMMARY

Sixteen recorded burials were taken from the ruin DC55. Of the sixteen, seven were adult males, four were adult females, one child and four infants. Five were oriented north and south, six east and west and five were too disturbed to observe orientations. Two were extended, nine were flexed, and five were disturbed. One burial was found in room 2, three in room 6, three in room 7, two in room 8, four in room 10, one in room 15, and two in a trench south of the ruin. Five were wrapped in either matting or leather cloth. Two were accompanied by bone awls, one by a piece of flint with secondary chipping, two by turquoise jewelry, four by basketry, and eight by pottery.

The pottery types represented were, Red Mesa B/W, Mesa Verde B/W, Emmerant Corrugated, Turco B/R, Escavada B/W, Chaco Corrugated, Gallup B/W, Forestdale Smudged, and Upper Gila Corrugated.

Serial Number	Age of Individual		Sex		Position		Meadow	Place of Burial	Wrappings	Accompanying Objects				Pottery Types	Period	
	Adult	Immature	Female	Male	Entered	Field				Grave	Flint	Other	Shell			Other
05530/1	X	Q	X					6	Matting Furthur cloth					X	Shards	P. II III
05530/2					Right Angle		N-S	6						2	Red Mason Beads Amber Beads Ceramic Beads	P. II III
05530/3	X	♂			Right Angle		N-S	2	Matting					1	Shards	P. II III
05530/4				X	Right Angle		E-W	6						X	Shards	P. II III
05530/5	X	♀					E-W	7						1	Puerto Beads Puerto Beads Esmeralda Beads Esmeralda Beads	P. II III
05530/6	X	♀			Mixed			10						1	Mesa	P. II III
05530/7	X	♂			Mixed			10						1	Yard	P. II III
05530/8	X	♂			Mixed			10						1	Beads 10/8	P. II III
05530/9	X	♂			Disturbed		NE				X	South of				P. II III
05530/10	X	♀			Disturbed		N-S				X	South of		2	Chaco Conjugated Beads	P. II III
05530/11	X	♂			X		E-W	7	Reed Matting Juniper Bark					1	Mesa Verde Beads	P. II III
05530/12	X	♂			Right Angle		E-W	15						6	Esmeralda Beads Square Beads Chaco Beads Chaco Conjugated Beads Forenoidal Smelted Beads	P. II III
05530/13				X	Right Angle		E-W	10						X	Shard	P. II III
05530/14	X	♂			X		E-W	7	Turnout Matting					4	Esmeralda Beads Mesa Verde Beads Chaco Beads Chaco Conjugated Beads Forenoidal Smelted Beads	P. II III
05530/15	X	♂			Complete		N-S	8	FG Mat Blanket					1	Forenoidal Smelted Beads	P. II III
05530/16				X			N-S	8								P. II III

1940

1941

Locality	Date of Installation		Condition of Body		Orientation	Phase of Burial				Wrappings	Accompanying Objects				Notes			
	Start	End	Intact	Excavated		Interment	Trench	Post Hole	Post Hole		Stone	Basketry	Ceramics	Pottery				
Bc5060					N-S											Red Mason Bc5060	P.I	
Bc5060																		P.I
Bc5060																		P.II
Bc5060					E-W													P.II
Bc5060					E-W													P.II
Bc5060					N-S													P.II
Bc5060					N-S													P.II
Bc5060					N-S													P.II
Bc5060					E-W													P.I
Bc5060					E-W													P.I
Bc5060					E-W													P.I
Bc5060					E-W													P.II
Bc5060					N-S													P.II
Bc5060					N-S													P.II
Bc5060					N-S													P.II
Bc5060					SE-NW													P.II

W. N. M. Bellonin - Tech 30, A Small House Rem

## COMPARISON WITH TSEH SO

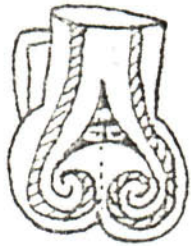
Sixteen burials each were removed from Tseh So and Bc53. Of the sixteen burials removed from Tseh So, six were oriented north and south, and two east and west; the others were too disturbed for observations. In Bc53, five were oriented north and south, six east and west and five were too disturbed for observations. There were seven adult, one adolescent, one child, and seven infant burials from Tseh So. From Bc53, there were eleven adults, one child, and four infants. In Tseh So, two were extended, five were flexed and nine were disturbed, while in Bc53, two were extended, nine flexed, and five were disturbed. In Tseh So, eight were wrapped in matting, and five were wrapped in either matting or leather cloth from Bc53. Ten burials from Tseh So were accompanied by pottery, and eight from Bc53.

The burials from Bc53 and Tseh So were predominantly in rooms on or below the floor level, predominantly flexed, wrapped in or placed upon matting, and accompanied by pottery. Infants may have been buried in the extended position rather than flexed. However the majority of Tseh So burials were disturbed, while the majority in Bc53 were buried beneath the floor level and undisturbed. The disturbance of so many of the burials may have been caused by prairie dogs, robbers, or superposition of burials.

## BIBLIOGRAPHY

- Brand, Donald D., Hawley, Florence M., Hibben, Frank C., et al.,  
Pseh So, A small house ruin, Chaco Canyon, New Mexico.  
The University of New Mexico Press, Albuquerque, New Mexico,  
1937.
- Hawley, Florence M., Field Manual of Prehistoric Southwestern  
Pottery Types. The University of New Mexico Press, Albuquerque,  
New Mexico, 1936.
- Gluckhohn, Clyde, and Reiter, Paul, Preliminary Report On the 1937  
Excavations, Bcb0-51, Chaco Canyon, New Mexico. The  
University of New Mexico Press, Albuquerque, New Mexico, 1939.

Pottery from  
Burial I



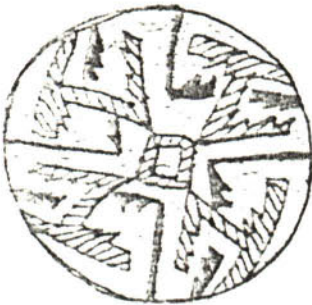
Puerco B/R  
WINGATE (TW)

Bc 53  $\frac{10}{2}$



Escavada B/W

Bc 53  $\frac{10}{4}$



Puerco B/R  
WINGATE (TW)

Bc 53  $\frac{10}{1}$



Escavada B/W

Bc 53  $\frac{10}{3}$

Pottery from  
Burial II, III, IV



<sup>BS</sup>  
Mesa Verde B/W

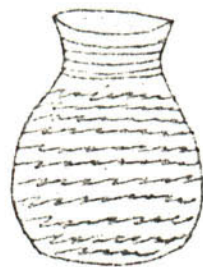
Bc 53  $\frac{10}{8}$

1941

VA 2083-18

Pottery from

Burial VI

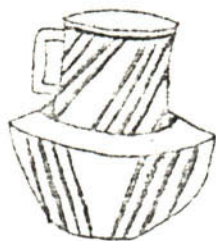


Chaco Corrugated.

Bc 53  $\frac{10}{7}$

Pottery from

Burial VII



Toodline (TW)

Mesa Verde B/W

Bc 53  $\frac{10}{13}$

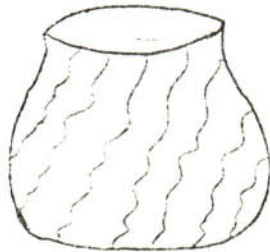
1940

Pottery From

Burial II



puerco (TW)  
Red Masu B/W

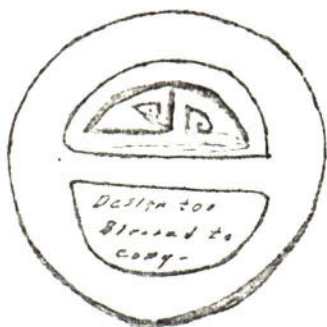
B-53  $\frac{10}{9}$ 

Exhiberant Corrugated.

B-53  $\frac{10}{10}$

Pottery Name

Burial #



Bc53 10/25

Escavada B/W



Bc53 10/27

Forastala Smudged.



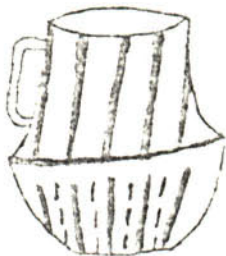
Bc53 10/22

Escavada B/W



Bc53 10/24

Chaco Corrugated



Bc53 10/26

Bull (TW)  
Mesa Verde B/W

PIPIE  
Galipoma



Bc53 10/28

Upper Gila  
Corrugated.  
(SMUDGED-TH)

1941

Pottary Prome  
Burial II



Forest dala  
Smadged.

Bc53  $\frac{10}{14}$