

COLLECTION: Chaco Archive

**CDI
ACCESSION
NUMBER:**

000661

ERRATA:

COMMENTS:

(VA1721) Field notes and forms from the excavation of room 21, Bc 51, 1937 season.

CITATION:

Higgs, Mary K.
1937 Room 21, Bc 51. Vivian Archive No.VA1720, NPS Chaco Culture NHP Museum Archive,
University of New Mexico, Albuquerque.



C85621
VA 17 21B-1*

Room 21

BC 51

Also a drawing of
Kiva 3

8/27/37

Pg. 2 of Room 21

Room #21

Several small cache pits showing in floor.

HR TONE

VA1721B-3

EXCAVATION RECORD

Date: August 28, 1937
Season: 1937 Summer
Excavated by: Mary K. Higgs

Site: Be 51

Chart No.: 2 Room No.: 21 Kiva: Plaza:
Shrine: Altar: Cist: 1

Plan:

- Form and dimensions: Oblong shape
N WALL 11', S wall 11'2", E wall 7'4", W 7'8"
Start Column 1 meter square.
- Walls and floors: Floor of soft adobe
- Opening: None
- Sub-structures or special features: Two fire pits and a cist

Architecture and building materials used:

- Masonry or adobe: Large rocks used in masonry
No adobe laid with large rocks on bottom + graduated on up.
- Plastering: None
- Roofing: Adobe caved in - no large beams but a few small ones

111. Condition and description:

- Floor sequence: None
- Wall sequence: None
- Special features: Fire pits are built around + on top of a stone slab plastered on the edges with adobe
Cist was encircled with ring of red oere.

Description of room fill: Fill consisted of sandy loam, vegetable material and charcoal scattered throughout. Pot sherds were abundant. Strat column consisted of the same material.

Pottery: Two burial offerings
 Wingate black on red
 McKelmo black on white
 Both are open bowls
 Shards were plentiful

Burials: One - poorly preserved
 Flexed position, Facing south
 Animal bones: Turkey, Deer, Frog,
 Fairly plentiful

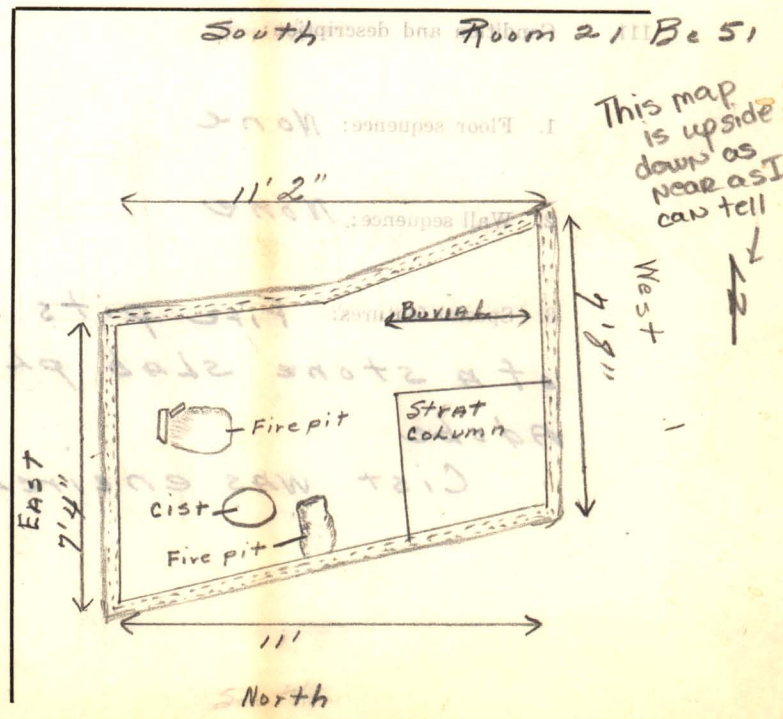
Misc. data:

Artifacts: Bone awls,
 hammerstones, polishing
 stones, hand axe, manos,
 metates, cist cover.

Photographed: X

Sketched:

Bags marked by whom: Mary K Higgs



Be 51

Room 21

8/28/37

Mary K Higgs

I started on a new room and laid off a strat column one meter square.

I found a polishing stone 1'2" from the north^{west corner} wall and 4'3" from west wall.

at the depth of 2'2" I found a mono 20" from north wall & 15" from west wall.

Also, I found a metate 5" from north wall & 6" from strat column. Under the metate was a metate and also one on top of it.

At this level (2') was an interesting fill of vegetable material, & ashes. Also a great number of animal bones and charred corn cob.

Found hammerstone 8" from north wall & 3'4" from strat column. In north wall found polishing stone 3'4½" from strat column. Numerous animal bones here. One bone of large bird had hole in it like whistle. Found broken mono in north wall 4' from strat, one whole one & broken one on top of it. Found hammer.

stone 2' from ^{south} north wall + 3' 10" from
 strat column. Shards numerous & fairly
 large.

Found fire pit near north wall
 28" from strat column. Mound 5' 9" from
 NW corner & 11" from east wall. Sand
 fill - many sherds. Found piece of beam
 log near south wall 44" from east
 wall 14" down.

Found human bones in ^{60th east} (south southwest)
 corner which proved to be a burial.
 With it were buried one wingate
 black on red bowl and one McElma
 black on white bowl. Under the McElma
 bowl was a broken mirror. The body was
 in very poor condition, lying in flexed
 position with the face toward the
 south. A ^{piece of} frag effigy was found near
 the spine of the body.

Mounds were numerous in the
 room — 1st Mound together 34" near
 6" from east wall. 2nd Mound 56" northeast
 8" from east wall. 3rd Mound 8" from ^{south} north
 east, 4" from east wall. 4th Mound 34" from
 east wall 36" from south.

Hammerstone 18" down 44" east, 3" from south wall.

Small piece of adobe 27" down measures 13" x 6" 46" from north wall 5' from east wall. Probably from caved in roof.

⁶ ^{Two} Mounds 36" from north 5' from east wall 27" down. Had slab of stone under them. Layer of vegetable material here.

Cist cover found 40" from east, 49" from north, 27" down.

Broken metate 23" down, 45" from north, 21" from south wall. Charred things under it.

⁷ Mound 9" from corner of strat column 6'8" southeast corner.

⁸ Mound 7'2" southeast, 2" from corner of strat col.

⁹ Mound 2' down 3'2" from NE corner 4'6" southeast corner.

I finished the room down to the floor which was soft adobe.

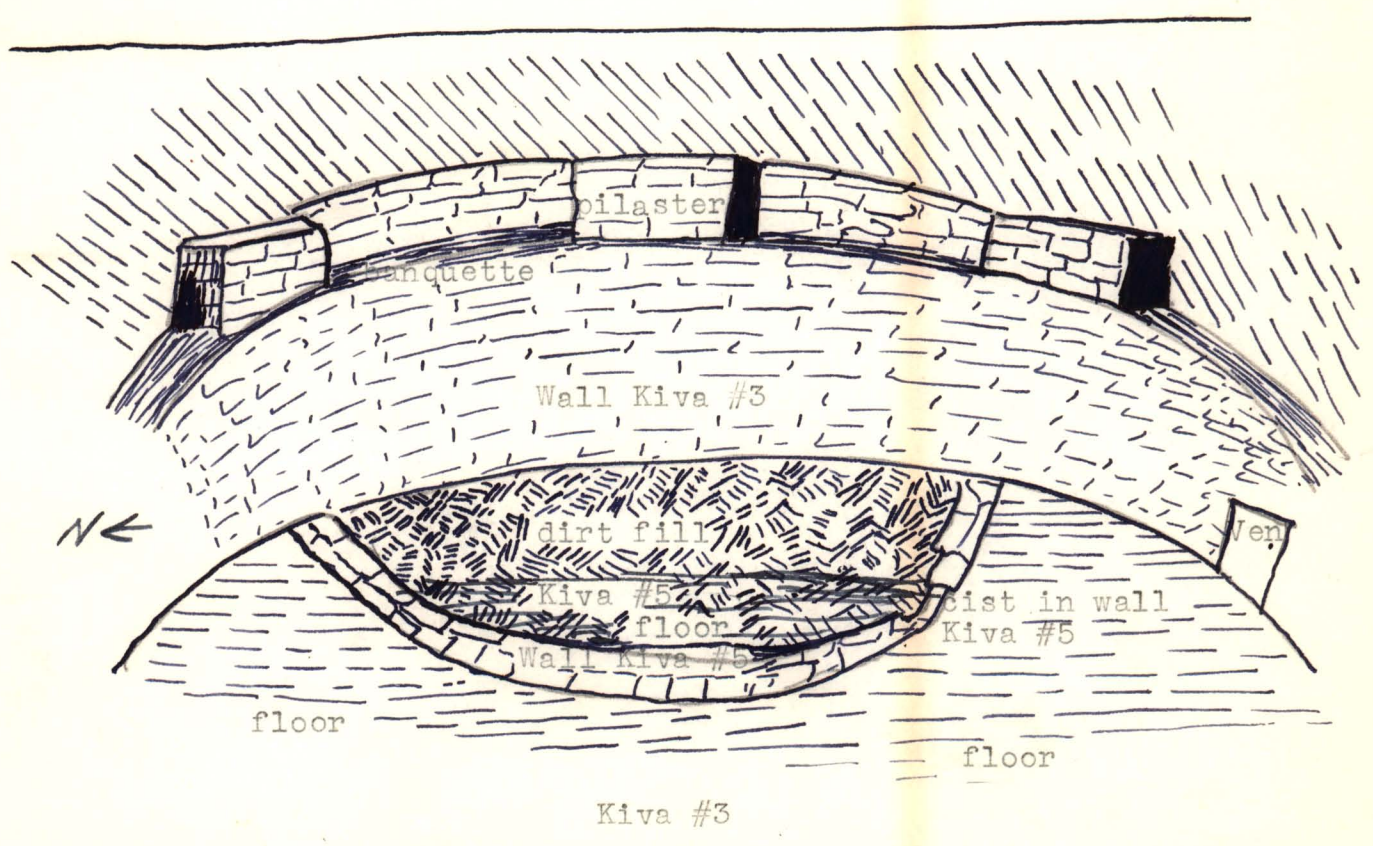
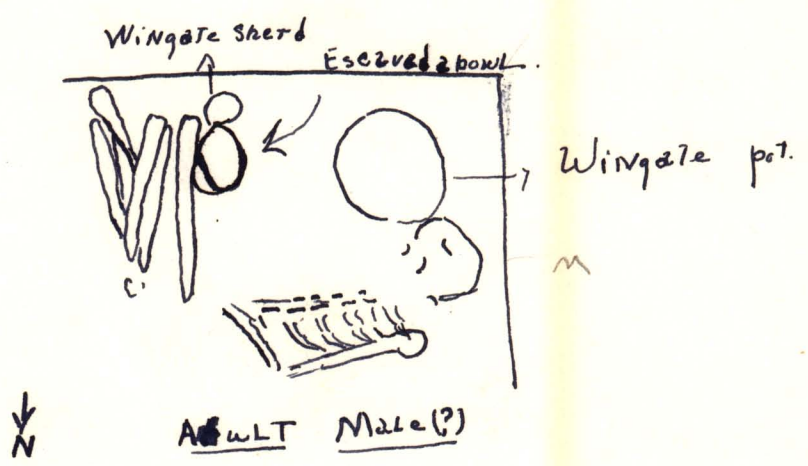
8/23/27

Room #21

Adjacent to and south of Kiva #2.

In southwest corner of room 1' down, found articulated human bones.

B.23.



8/25/37 View of super position of Kiva #3 over part of Kiva 5 from west.