

COLLECTION: Chaco Archive

**CDI
ACCESSION
NUMBER:**

000663

ERRATA:

COMMENTS:

(VA1723) Field notes and forms from the excavation of room 23, Bc 51, 1937 season.

CITATION:

Boynton, M. and C.F. Harding.
1937 Room 23, Bc 51. Vivian Archive No.VA1723, NPS Chaco Culture NHP Museum Archive,
University of New Mexico, Albuquerque.



C85623
VA1723B-1

Room 23

BC 51

8/23/37Room #23

Adjacent to and south of Room #20. Found cache of pumpkin seeds in southeast corner of strata column 40" down and 10" below what appears to be the top floor level.

8/24/37

Found drill, southwest corner 40", southeast corner 60", 62" down. Arrow head (probably B.M.) 67" down, southwest corner 10", southwest corner strat. 44".

Room has been excavated to depth of 70". For this depth south wall continues unbroken and smoke stained.

Approximately 2' down water sorted layer in strat. corresponds with change in west and north walls.

VA1723B-3

EXCAVATION RECORD

Site: Bc57

Date: August 27

Season: 1931

Excavated by: M. Boynton

Chart No.:

Room No.: 23

Kiva:

Plaza:

Shrine:

Altar:

Cist:

Plan:

1. Form and dimensions: rectangular - south wall 70" - west wall 98" height of room 80"
2. Walls and floors: one floor at level 2' down from top of strat. Pueblo I floor 80" down - rising from that floor wall 22" high over against west wall 44" up from floor is a wall 33" high and 8" thick on east side
3. Opening: none observed
4. Sub-structures or special features: none observed

Architecture and building materials used:

1. Masonry or adobe: masonry - adobe quite thick between spawls - small pieces except in east secondary wall - $\frac{1}{2} \times \frac{1}{2}$
2. Plastering: adobe plastering - brown on little wall on floor - blacked on room walls
3. Roofing: none observed

111. Condition and description:

1. Floor sequence: floor at 2' level plastered with adobe, but not pueblo I floor
2. Wall sequence: large pieces of sandstone in secondary last wall in comparison with small ones in regular room wall
3. Special features: ~~none observed~~ apparent cist at 2' floor level two walls in apparently odd position

Description of room fill:

The top strata were largely adobe - considerable sandstone intermixed - Some gypsum infiltrate - a considerable number of sherds and animal bones - lower strata largely sandy loam - stratification throughout difficult to see.

Pottery:

sherds quite plentiful, decreasing as pueblo I floor heared. In upper levels considerable McElma. Further down, predominantly Escavada

Burials:

none

Animal bones:

predominantly prairie dog

Misc. data:

mold in mud of roofing material - three very small particles of turquoise

Photographed: no

Sketched:

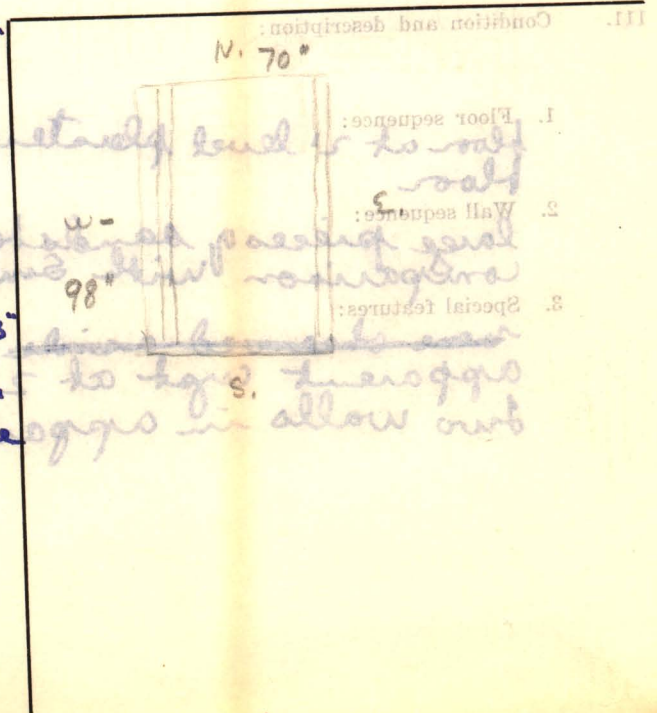
Artifacts:

- broken mano - N.E. 62" - N.W. corner with strut - 50" - depth 20"
- sandstone disk - N.E. 20", N.W. 36" depth 27"
- white dull - S.W. 40" - S.E. 60" depth 62"
- black arrow point - S.W. 10" - N.W. 44" depth 67"
- mano - S.E. 64" - N.E. 30" - 79" depth
- mano - S.E. 72" - N.E. 29" - 79"
- sandstone disk - S.W. 38" - N.W. 47" depth 6 1/2"
- broken black bead with holes drilled at each end of piece
- flat white bead - n.w. 51" N.S. 53" level 3' down
- metate - N.S. 32" - N.W. 44" depth 71"
- mano - N.S. 52" - n.w. 51" depth 71"

Bags marked by whom:

M. Boynton

Polishing stone



BC 51

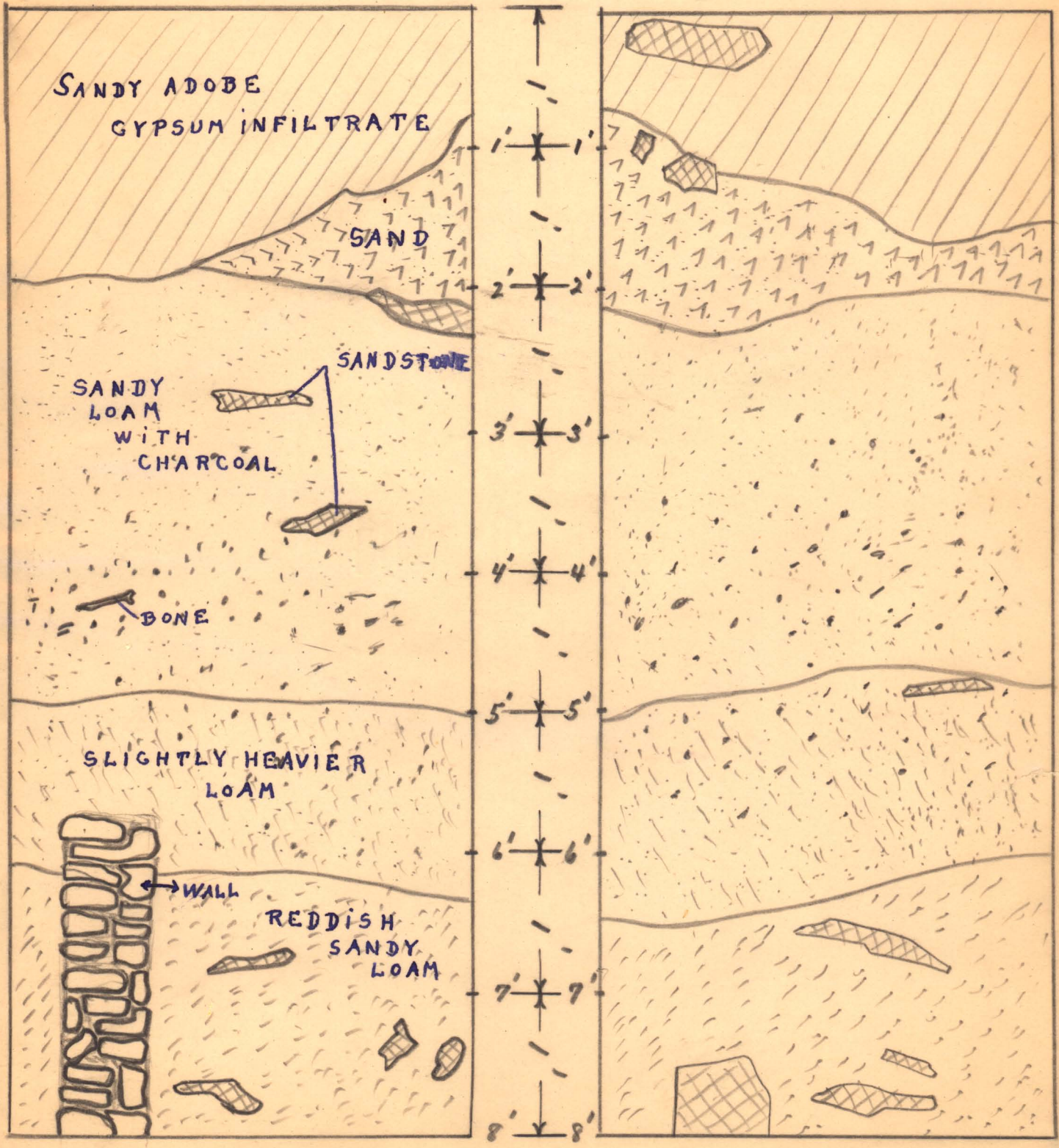
ROOM 23

PROFILES

STRAT COLUMN

SOUTH FACE

EAST FACE



Report on Strat Column, Room 23, Bc 51

VAI 723B-5

S.F. Harding

- Level 0-1 First few inches were dry and dusty. The rest of the level was of sandy loam mixed with adobe. Shards mostly Chaco Corrugated and Gallop Black on White. Some animal bone
- Level 1-2 Sandier, revealed yellow sand floor just above the two foot line which was well packed. Fewer shards than the level above, Corrugated and Gallop making up the majority.
- Level 2-3 A pore bead S1°NW, S3°NE. Shards corrugated and Gallop. Sandy loam with pieces of adobe. Several pieces of sandstone. Many bones.
- Level 3-4 Sandy loam. Shards some Gallop. Emberrant Corrugated and Escavada make up the majority. Remnant of Redde, position unknown. A stone knife of unknown origin appeared in excavated dirt. Some bones
- Level 4-5 Sandy loam. Charred corn at corn, Shards of Escavada Gallop and Emberrant Corrugated and a little Flagstone. Some bones.
- Level 5-6. Sandy loam with adobe at the bottom of the level. Excavated around the side of the wall, well plastered with adobe. Shards, Escavada, Emberrant Corrugated. Few bones.
- Level 6-7 Adobe with large pieces of sandstone. Shards Escavada, Emberrant Corrugated and a few pieces of Gallop. Few bones
- Level 7-8 Adobe. Few shards, mostly corrugated & Escavada, few bones. The date NE 32° NW 44° on the seven foot level. Mano S4°NE, S1°NW. Broken Mano N-E. 67, NW 50.