

COLLECTION: Chaco Archive

**CDI
ACCESSION
NUMBER:**

000704

ERRATA:

COMMENTS:

(VA1704) Notes and forms from the excavation of room 22, Bc 50.

CITATION:

Grater, Byron.
1936 Room 22, Bc 50. Vivian Archive No.VA1704, NPS Chaco Culture NHP Museum Archive,
University of New Mexico, Albuquerque.



Room 22

BC 50

C85604

VA1704B-1ⁿ

EXCAVATION RECORD

Description of room fill

Site: Bc # 50

Season: August 136

Chart No.:

Room No.: 22

Kiva:

Plaza:

Shrine:

Altar:

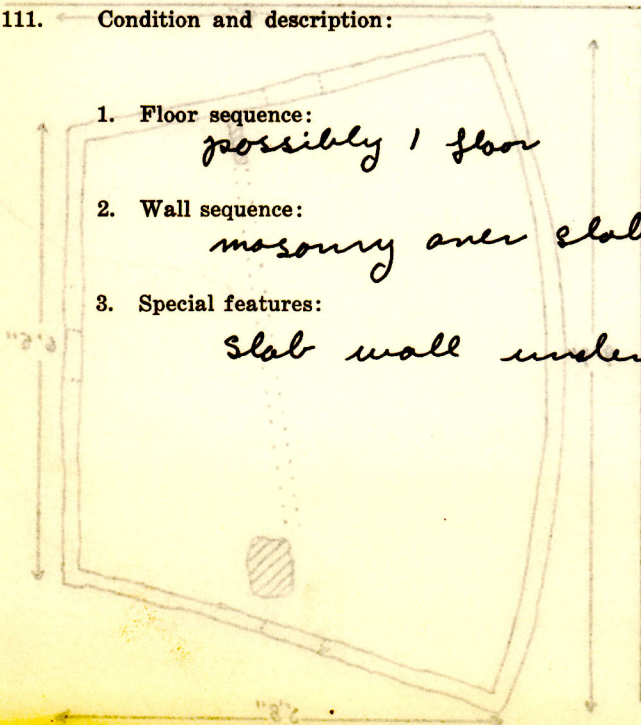
Plan:

- 1. Form and dimensions: *roughly square.*
n. wall - 5'9", E. wall - 6'5", S. wall - 5'8", W. wall - 6'9" ^{more like 6'9"}
- 2. Walls and floors:
walls - rough small stones set in adobe mortar.
- 3. Opening:
door in n, e, & s. wall. (North door bricked up)
n. door - 2'9" x 1'4", E. door 2'6" x 1'5", S. door 2'4" x 1'4"
- 4. Sub-structures or special features:
slab walls under four walls, and traces of one down center of room.

Architecture and building materials used:

- 1. Masonry or adobe:
rough small stones set in adobe
- 2. Plastering:
adobe.
- 3. Roofing:
probably plaster over reeds over vegas

111. Condition and description:



- 1. Floor sequence:
possibly 1 floor
- 2. Wall sequence:
masonry over slabs.
- 3. Special features:
slab wall underlying regular masonry.

Description of room fill:

The room fill was a mixture of unsorted masonry
sand and refuse which was unstratified.

Pottery:

See Field Catalog Blanks for unwhole & restorable pieces
See accompanying sheet for class classification

Artifacts:

See Field Catalog Blanks
for list.

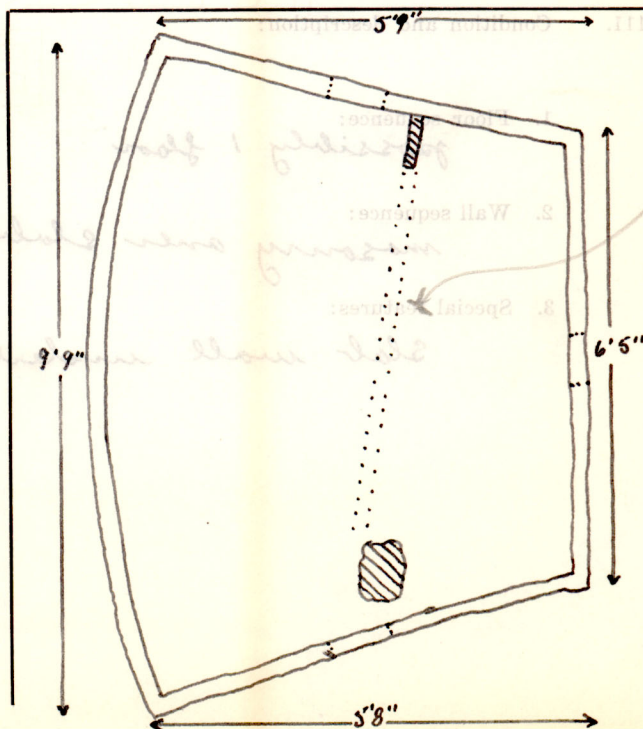
How do you expect us to
look up every one?

Bags marked by whom:

Selmer

Photographed: by Sconlon

Sketched: by Selmer



Yes and
what the h.
is this?
Oh a
substructure
wall!

SHERD CLASSIFICATION OF ROOM 22, RUIN #50, CHACO CANYON

Level #1

| | | |
|------------------|------------|--------------|
| Lino Grey | 9 | 3.8% |
| Mesa Verde B/W | 8 | 3.3% |
| Chaco B/W | 10 | 4.9% |
| Puerco B/R | 5 | 2.1% |
| Chaco Corrugated | 27 | 11.3% |
| Gallup B/W | 55 | 23.0% |
| Exuberant Corr. | 67 | 28.0% |
| Wingate B/R | 7 | 2.9% |
| Escavada B/W | 39 | 16.3% |
| Kanaaa Grey | 5 | 2.1% |
| Kana-a B/W | 1 | .5% |
| Red Mesa B/W | 5 | 2.1% |
| La Plata B/W | 2 | 1.5% |
| | <u>239</u> | <u>99.8%</u> |

Level #2

| | | |
|------------------|------------|--------------|
| Lino Grey | 15 | 12.0% |
| La Plata | 2 | 1.6% |
| Red Mesa | 10 | 8.0% |
| Exuberant | 12 | 9.6% |
| Escavada | 10 | 8.0% |
| Gallup | 17 | 13.6% |
| Chaco B/W | 12 | 9.6% |
| Chaco Corrugated | 38 | 30.4% |
| Wingate | 5 | 4.0% |
| Mesa Verde | 3 | 2.4% |
| | <u>124</u> | <u>99.2%</u> |

Level #3

| | | |
|------------------|------------|---------------|
| Lino Grey | 13 | 13.0% |
| Red Mesa | 9 | 9.0% |
| Exuberant Corr. | 28 | 28.0% |
| Escavada | 10 | 10.0% |
| Gallup | 16 | 16.0% |
| Chaco Corrugated | 8 | 8.0% |
| Chaco B/W | 8 | 8.0% |
| Mesa Verde | 5 | 5.0% |
| Puerco B/R | 3 | 3.0% |
| | <u>100</u> | <u>100.0%</u> |

Level #4

| | | |
|-------------|----|------|
| Lino Grey | 5 | 4.8% |
| Kana-a Grey | 1 | .9% |
| Red Mesa | 1 | .9% |
| Kana-a B/W | 9 | 8.7% |
| Escavada | 10 | 9.7% |
| Wingate | 4 | 3.8% |

| | | |
|------------------------------|----|-------|
| Red with Black Polished int. | 5 | 4.8% |
| Exuberant Corr. | 14 | 13.5% |
| Gallup | 8 | 7.7% |
| Chaco Corr.. | 28 | 27.1% |
| Chaco B/W | 9 | 8.7% |
| Mesa Verde | 9 | 8.7% |

Total - 103 | Percentage - 99.3

Level #5

| | | |
|------------------------------------|------------|--------------|
| Lino Grey | 10 | 3.3% |
| Exhuberant | 36 | 12.0% |
| Escavada | 50 | 16.5% |
| Gallup | 53 | 17.6% |
| Chaco Corr. | 40 | 13.2% |
| Chaco B/W | 12 | 04.0% |
| Wingate | 18 | 06.1% |
| Mesa Verde | 55 | 18.3% |
| Tusayan Pol. | 8 | 02.1% |
| Red with bl. burnished interior | 18 | 06.1% |
| | <u>300</u> | <u>99.2%</u> |

Level #6 sherds unclassified. Shipped to Albuquerque.

Layer #1 Of Pillar

| | | |
|-------------|----------|-------------|
| Banded Neck | 1 | 25% |
| Lino Grey | 1 | 25% |
| Escavada | 2 | 50% |
| | <u>4</u> | <u>100%</u> |

Layer #2 of Pillar

| | | |
|-------------|-----------|---------------|
| Kana-a B/W | 1 | 6.2% |
| Escavada | 5 | 31.4% |
| Gallup | 1 | 6.2% |
| Chaco Corr. | 5 | 31.4% |
| Chaco B/W | 3 | 18.6% |
| Mesa Verde | 1 | 6.2% |
| | <u>16</u> | <u>100.0%</u> |

Layer #3 of Pillar

| | | |
|--------------|-----------|--------------|
| Lino Grey | 4 | 7.1% |
| Kana-a Grey | 3 | 5.5% |
| Red Mesa | 8 | 14.4% |
| Exhub. Corr. | 5 | 08.6% |
| Escavada | 6 | 11.1% |
| Gallup | 11 | 20.0% |
| Chaco Corr. | 6 | 11.1% |
| Chaco B/W | 6 | 11.1% |
| Mesa Verde | 3 | 5.5% |
| Wingate | 3 | 5.5% |
| | <u>55</u> | <u>99.9%</u> |

Room 22 - Probably
 Level - Unknown (Sack lost)

| | | |
|-----------------------|------------|----------------|
| Kila - | 1 | 0.3852 |
| Wingate B-R - | 8 | 3.1007 |
| Charo Curry - | 2 | 0.7751 |
| Lauro Grey - | 19 | 7.3643 |
| Kana - | 4 | 1.5503 |
| Mesa Verde B-W - | 5 | 1.9379 |
| Charo B-W - | 16 | 6.2015 |
| Red Mesa B-W - | 20 | 7.7519 |
| Escavado B-W - | 37 | 14.3023 |
| P.II Exuberant Cor. - | 94 | 36.4341 |
| Sally B-W - | 52 | 20.1550 |
| | <u>258</u> | <u>99.9583</u> |

J. M. Goggin
 10/15/36

Ruin 50
Chaco Room 22
Layer 6
8/24-36
Lehman

Classified P. Vorreger

- Gallup hl on wh. 14
- Chaco hl on wh. 14
- Mesa Verde hl on wh. 1
- Wingate hl on red 15
- Escavada hl on wh. 21
- Exuberant Corrugated 38
- Chaco Corrugated 19
- Kama-a grey 2
- Bad mesa hl on wh 11
- Reno grey 4

J M A

| | | | | |
|------------------------|-----|---|-------------------|---------------|
| Gallup - 30 | 36 | - | 18.946988 | Ruin 50 Chaso |
| Chaso - 12 | 12 | - | 6.249996 | Room 2 2 |
| Chaco Conroy | 6 | - | 3.224998 | Layer 4 |
| Wingate | 9 | - | 4.687491 | 8/18/36 |
| Escavader | 17 | - | 8.854161 | |
| Etla - 4 | 4 | - | 2.083332 | |
| Kana-a - 5 | 5 | - | 2.504165 | |
| Tras Grey | 11 | - | 5.729163 | |
| Red Mesa | 19 | - | 9.895827 | |
| Mesa Verde | 26 | - | 13.541658 | |
| (Et) - P H Conroy | 47 | - | 24.479151 | |
| | 192 | | <u>100.196936</u> | |

VA1704B-7

J.M. Goggin

J M H

When a test trench was run into the ruin to locate the walls, two west walls were found. A later type wall had been built over an earlier type wall. I excavated in the west substructures.

When the substructures were excavated, we found a large slab wall at the floor level. The slabs were flat, ^{on the} outer surface; covered by about three inches of adobe when the adobe was still on the slabs. The slabs were capped by ~~an~~ adobe wall. This adobe wall, running around the substructure, with the exception where it had been either torn down, or replaced by the later wall on the east side of the substructure. By digging in at one corner, I found the slab wall ~~to~~ going south from the north wall of substructure one, but was unable to tell whether or not the adobe wall was still on top of the slab wall. The slabs on the east side were inside the large rock wall of the western portion of the later wall. The east wall was about three feet ~~taller~~ taller than the west wall of the substructure, since the later pueblo was built over the east wall. The average height of the earlier structure. The average height of the slab wall was about sixteen inches. The thin adobe walls averaged about seven inches in width. The top of the west wall averaged about two feet in width.

The following figures are the dimensions of the west substructure.

| Substructure | Slabs ^{average} (ht) | adobe ^{average} (ht) | length wall | width at top |
|--------------|-------------------------------|-------------------------------|-------------|--------------|
| North wall | 16 inches | (adobe gone) | 7 feet | 7 inches |
| East wall | 16 " | | 10 " | 11 " |
| South wall | 16 " | 2 1/2 feet | 8 " | 8 inches |
| West wall | 16 " | 2 1/2 " | 10 " | 18 " |

Covering over slabs

N. (none except 1 joint - 3" deep)

E.

S. 3" adobe

W. 3" adobe



Substructure 2

| | <u>slabs (average ht.)</u> | <u>adobe (average ht.)</u> | <u>length wall</u> | <u>width at top (average)</u> |
|----|----------------------------|----------------------------|--------------------|-------------------------------|
| N. | 16 inches | 2½ feet | 7 feet | 7 inches |
| E. | 16 " | — | 8 " | 11 " |
| S. | 16 " | — | 7 " | 7 " |
| W. | 16 " | gone | 8 " | 10 " |

Covering over slabs

N. 3 inches adobe

E. —

S. 3 inches adobe

W. 3 " "

Substructure 3 — not sufficient excavation to determine specifications of rooms. Structure appears to be built of ^{brick} same wall formation as substructures one and two.

Bc 50

Dig Notes. ✓

The

Room # 22
Schmer

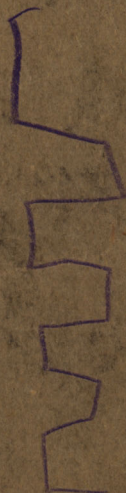
SPIRAL

1704A

*A superior notebook
with leaves that turn
fast — and lie flat.*

No. HG-620

Trash Md
& Rm #22



VA1704B-9

Book No. _____ From _____ to _____

SPIRAL BINDING—U. S. Patents 1516932—1942026—1985776

Other Patents Pending.

August 4, 1936. (Tuesday)

Work was started on the stratigraphic tests today. The trenches running from north to south through the refuse mound of unit #50 in Chaco Coñon. The mound rises to the south, and the trenches were started, at ground level, from a work pit a few feet beyond its northern edge. They are adjacent, and being taken out in six foot squares. The fill from these squares is being taken out in strata six inches in thickness. Bone material and artifacts are sacked separately from such sherds as are found.

August 5, 1936. (Wednesday)

Strata 1 of test number 2 was completed today. Sherds were plentiful (see Stratigraphy sheet #1 for classification), no artifacts were found, and the lower half of a

right humerus was found. ^{VA1704B-11} Unfortunately the sherds from this test and from test number 3 were mixed in the laboratory, hence the count includes those from both trenches.

August 6, 1936. (Thursday)

Strata 2 of test number 2 was completed today. The depth varied from 12-15 inches from the surface. Sherds were rather scarce (see Stratigraphy Sheet #2 for classification), one bone drill was found, but no skeletal remains were located. Charcoal present.

August 7, 1936. (Friday)

Strata 3 of test number 2 was completed today. The depth varied from 18-21 inches from the surface. Sherds were scarce (see Stratigraphy Sheet #3 for classification), one small obsidian arrow point was found, and one right ulnae was located. Char-

coal was quite prevalent, but only in small flecks.

VA1704B-12

August 8, 1936 (Saturday)

Strata 4 of test number 3 was completed today. The depth below the surface varied from 24-27 inches. Shards were extremely scarce (see Stratigraphy Sheet #4 for classification), neither artifacts nor burials were found. A few charcoal flecks were observed. In this layer the texture of the soil was notably different from that in those above, being mainly a hard, grey, natural adobe. During the course of the work it was often necessary to use a pick in order to loosen it sufficiently to make removal with a trowel possible. With the completion of layer 4 the removal of the first six foot square was finished.

Work was stopped at the middle of the excavation period

VA1704B-13

(afternoon) work was discontinued in order to observe the removal of a human skeleton from its resting place between two walls of the village. The burial was found in association with numerous Pueblo I sherds, and was accompanied by one fragmentary adobe and one small pitcher of the same period. The pitcher was found inside the skull where it had fallen when the bones collapsed. The bones were moderately well preserved. The work of removal was done by Mr. Senter, and was preceded by a lecture on the technique of handling burials.

August 10, 1936 (Monday)
no work done today.

August 11, 1936 (Tuesday)
Visited Pueblo Bonito today.
See accompanying report for details.

August 12, 1936 (Wednesday) VAI704B-14

Work was started on layer 5 of Section II, Test 3 today. Both the numbering of the layers and the technique of removing the fill have been changed on this section. The layers are numbered up from an arbitrary level which is taken to correspond with the bottom of the test pit. The fill, instead of being trowled out, is now being shoveled out layer by layer and looked over on the bottom of the last section to be removed.

August 13, 1936 (Thursday)

Made an inspection trip of a number of the ruins in the eastern end of the canyon. The primary object of the trip was a visit to Shali'koshi village. Mr. Brand acted as guide, and lectured on the various sites.

August 14, 1936 (Friday)

VA1704B-15

Discontinued work on the stratigraphic tests today, and continued work in room 22 of the pueblo which had previously been begun by another student. The removal of layer 3 was finished, and a start was made on layer 4. During the course of the removal of the fill a number of human bones were found. Further excavation revealed a badly disturbed burial. Most of the bones were found in the same layer, which was overlaid by a well stratified deposit of wind blown sand. Almost half of a rather small bowl was found upside down at the spot where the skull should have lain, had it been found. The photographing and removal of the bones was postponed because of darkness.

August 15, 1936 (Saturday)

The fragmentary skeleton, found

yesterday, was photographed and removed to the field laboratory, where it was turned over to Mr. Senter, today. The burial report was filled out under his supervision. The absence of many of the bones may be accounted for by prairie-dogs, traces of which are found through the entire fill of the room. In the afternoon, after the main part of the burial had been removed, a mandible and a small fragment of a skull, showing the juncture of the three sutures, were found in the northeast and northwest corners of the room respectively. In trenching around the burial the walls of three pots were uncovered. Digging was started for these as soon as the bones had been taken out. In order to remove them it was necessary to tear down the stratigraphic pillar which was directly over them. Excavation revealed a double

row of pots and very large
sherds ranged along the east
wall from the south end to
a point roughly two thirds of
its length away, between layers
four and five. One of the most
interesting features of this coche
was the presence of two bowls,
one of them nested inside the
other. In all there were 3 bowls,
and 3 ollas including one corn-
gated piece which was located
in the north east corner of
the room and one plain grey
one with the neck missing
which was found directly beneath
the burial. These pots were packed
and removed to the laboratory. Al-
though they were found in the
same layer as the burial they
were removed from it by almost
half the width of the room. This
fact gives rise to conjecture as
to whether or not they were
placed with it as mortuary
offerings.

August 17, 1936 (Monday)

VA1704B-18

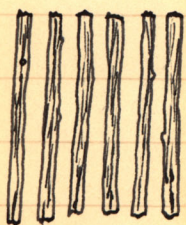
Completed work on layer 4 today, and began the removal of layer 5. In addition to the finds previously mentioned, a selenite pendant and a small shell bead were discovered. They were mixed in with the earth fill of the room, and were apparently in no connection with any of the other specimens from the room, or with each other.

In layer 5 of the northeast corner of the room the fragments of an immature human skull were found in direct association with a small bowl, a very small olla (height $2\frac{1}{4}$ "), and almost half of a large Wingate B/R bowl. Both the bones and the pottery were removed to the laboratory, where the former were turned over to Mr. Senter, after being photographed. It is interesting to note that this find rested directly below the

adult mandible and a corrugated
alla which were found in layer
4.

August 18, 1936 (Tuesday)

The removal of layer 5 was
continued today. In the northwest
corner of the room a well articulated
immature human burial was located.
The exposing of the skeleton was
considerably slowed up by the
presence of a badly decomposed
reed mat directly under it. After
the burial was removed
traces were found which
indicated that it had
covered the ground under
the whole body.



Section of
Reed Mat
with Be 50 ⁵⁰/₃

All that remained
of it was a section of about 7 1/2"
x 10" which was partially under
the pelvic region. This mat was
shelaced while in situ, and later
removed and mounted in the field
laboratory. Although there were

VA1704B-20

no traces of weaving holding the
reeds together, they must have
existed as it would have been im-
possible to lay them with such
regularity. They were spaced about
 $\frac{1}{8}$ " apart, and may have been cover-
ed with a mat of finer material.
Unfortunately, what may have been
traces of this mat were too fragile
to permit clearing in order to
observe them. The removal of the
burial was postponed in order
that it might be photographed
in the morning light.

August 19, 1936 (Wednesday)

The removal of the burial,
uncovered yesterday, was completed
today after it had been photo-
graphed. During the course of
removal a small shell plug was
found just to the north of the
skull and about two inches from
it. It was white, cone-shaped,
 $\frac{5}{8}$ " long, and $\frac{3}{16}$ " wide at the base.

With the continuation of the removal of layer 5 a small fragment of fiber matting was uncovered. In trenching around this, in order that it might be treated with a preservative, the walls of three pits were uncovered. Further digging showed these to be a Gallup pitcher of mesa Verde shape and design, a small Gallup bowl which was badly warped, and a Tusayan polychrome bowl. In clearing away the fill portions of a number of burrow holes were uncovered. From these indications the presence of a burial was suspected, but it was necessary to discontinue work because of darkness.

August 20, 1936 (Thursday)

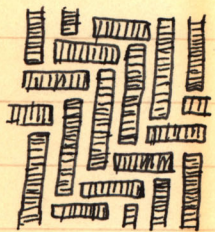
The clearing of the burial suspected yesterday was begun today. As the work progressed a Wingate bowl was found placed

close to the body, which was lying on its right side in a flexed position, just in front of the chest. The skull was covered by a large sherd from a corrugated cooking olla. Two small balls of malachite were found just at the bent knees, and a sherd with a lug was found covering the bones of the left wrist which rested on the left femur. The bones were cleared of all dirt so that they could be photographed the next day. They were in excellent condition, and - with the exception of the right patella - were almost all in place. This bone was found about two and one fourth feet from the rest of the burial.

August 21, 1936 (Friday)

The removal of the burial, found Wednesday, was completed today after it had been photographed. Upon taking out the bones,

which were sacked and turned over to Mr. Senter, it was found that the burial had been laid upon a fabric mat, which extended under the three pots previously mentioned. Only the outside portions of this mat survived the destructive action of the fluids of the decaying body, but these served to show its extent. It was a twilled plaited matting, and



Weave of mat
Found With Bc
6/5

made of some sort of soft fibre. The skeleton was oriented north-south, 2½" from the South wall, and 16" from the West wall.

August 22, 1936 (Saturday)

I finished the removal of layer 5 today, and began work on level 6. The sherds from layer 6 were extremely scarce, and no artifacts were found during the course of its removal.

August 24, 1936 (Monday) VAI704B-24

Work was resumed on the stratigraphic tests today. Layers of Trench 4, Section IV were removed. Shards were plentiful (see stratigraphic sheet for classification), but bones of any kind were almost non-existent.

August 25, 1936 (Tuesday)

Work was resumed on Room 22 of the Pueblo today. The removal of layer 6 was continued, and during the course of the excavations it was found that the south wall of the room, pierced by a doorway, was built upon a slab foundation which came almost to the sill of the door.



South Wall of Room 22

It is possible that these slabs formed a part of the walls of an older structure which lies below the one being excavated.

August 26, 1936 (Wednesday) VAI704B-25

The removal of layer 6 was completed. It was found that the slabs ran around most of the room under the four walls. A slab was also found which was set at right angles to the north wall, two feet from the east wall. The sherds found in this layer were relatively scarce.

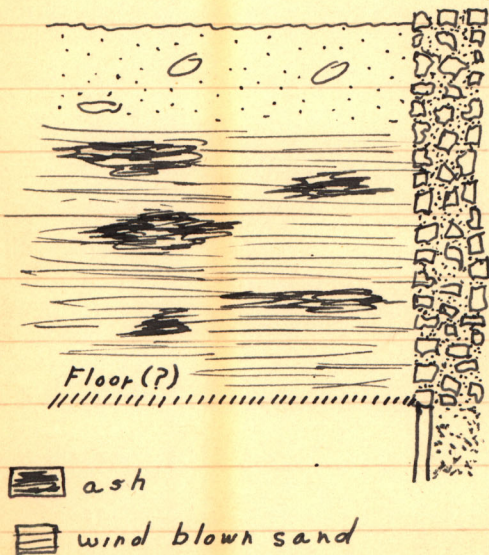
August 27, 1936 (Thursday)

Due to lack of time it was impossible to remove all of layer 7, but a trench two feet wide and one foot deep was run the width of the room along the south wall. At the bottom of the trench two large slabs, which may have formed part of the slab wall were found lying flat.

Summary.

Due to the large number of finds made in this room it was one of the most interesting in the P ueblo. The fill was a mixture of ash and sweepings and wind blown sand. These were not stratified, but seemed to be mixed in no particular order. The top layer and a half seemed to be quite barren of any refuse deposits, but contained a roughly circular sandstone disk 3" in diameter, a bone ring, a stone axe, and a pottery dipper. There

was considerable evidence that the fill had been disturbed from time to time. The evidence seems to point to an abandonment of this room (22) while other parts



of the pueblo were still occupied, with the result that it was used as a place in which to throw refuse from the adjoining rooms. The north wall contained a doorway which had been walled up with masonry, the east wall one which had been closed by room fill and was not cleaned, and the south wall which had been closed by debris, but was opened. Three burials and a large number of whole & restorable pots were found, as well as a number of artifacts. All of these were found above the floor level. No recognizable floor was found, but it may be assumed to have been on about the same level as the floor in the next room. This assumption was not used in measuring the height of the walls, as this was done from the top of the slabs which act as a foundation for them.

a record of all of the artifacts, pottery, and skeletal material discovered will be found on the regular farm sheets. On the whole the excavation of Room 22 proved to be extremely profitable, and added considerably to our knowledge of the pueblo.

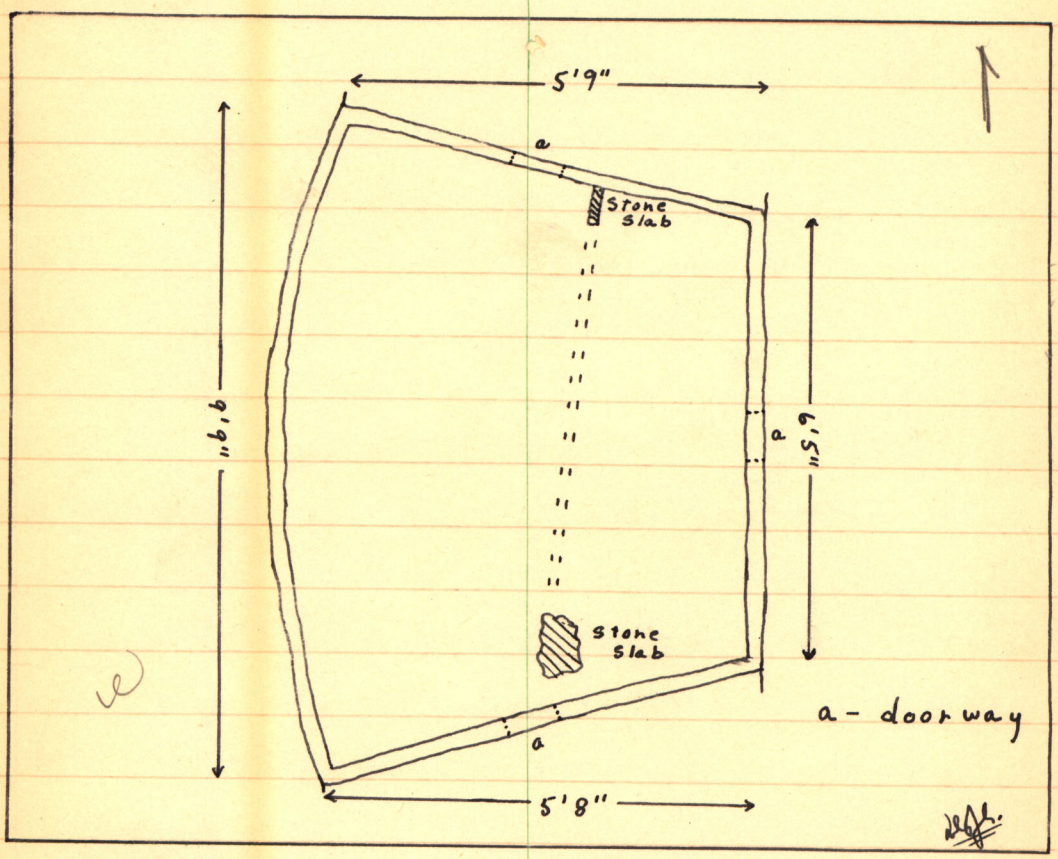
Measurements of Room 22.

| | | |
|------------|-------|-----------|
| North wall | 5' 9" | in length |
| East wall | 6' 5" | " " |
| South wall | 5' 8" | " " |
| West wall | 9' 9" | " " |

| | | |
|------------|--------------|------|
| North wall | aprox. 5' 6" | high |
| East wall | " 6' 6" | high |
| South wall | " 4' 6" | high |
| West wall | " 5' | high |

| | |
|----------------------|---------------|
| North door (blocked) | 2' 9" x 1' 9" |
| East door | 2' 6" x 1' 5" |
| South door | 2' 4" x 1' 4" |

Slabs under walls approx. 1' x 6" sq.
" 1 1/2" thick



Ground Plan of Room 22

Donald J. Schmitt