

COLLECTION: Chaco Archive

**CDI
ACCESSION
NUMBER:**

000711

ERRATA:

COMMENTS:

(VA1711) Notes and forms from the excavation of room 8, Bc 51.

CITATION:

Hayes, Alder.
1937 Room 8, Bc 51. Vivian Archive No.VA1711, NPS Chaco Culture NHP Museum Archive,
University of New Mexico, Albuquerque.



C85611
VA1711B-18

Room 8

BC 51

Masonry 12" under floor and
5' 9" from S.E. corner and 7' from
N.E. corner.

Floor 58" deep at S. wall
and 40" at N.E. corner.

Fireplace sunk in floor (40"
below top of E wall) 21" from
North wall, 8" from E wall,
28" from N.E. corner ~~2~~ it
was lined with perpendicular
sandstone slabs - 24" in diameter
and one foot deep.

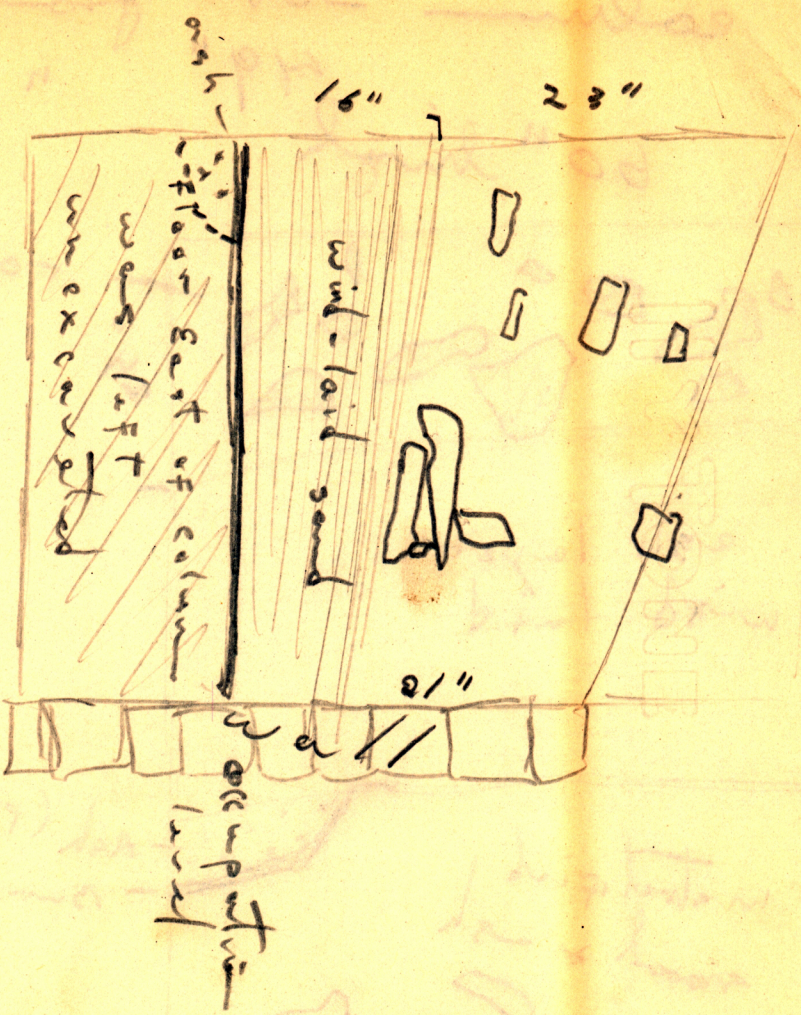
Plugged doorway 26" from
floor, 32" deep - 27" from S.E. corner,
19" wide - Masonry plug.

Broken metal at base of S.
face of strat. column - 73" from sur-
face - 75" N.E. corner - 92" S.E.
corner - 55" from S. wall.

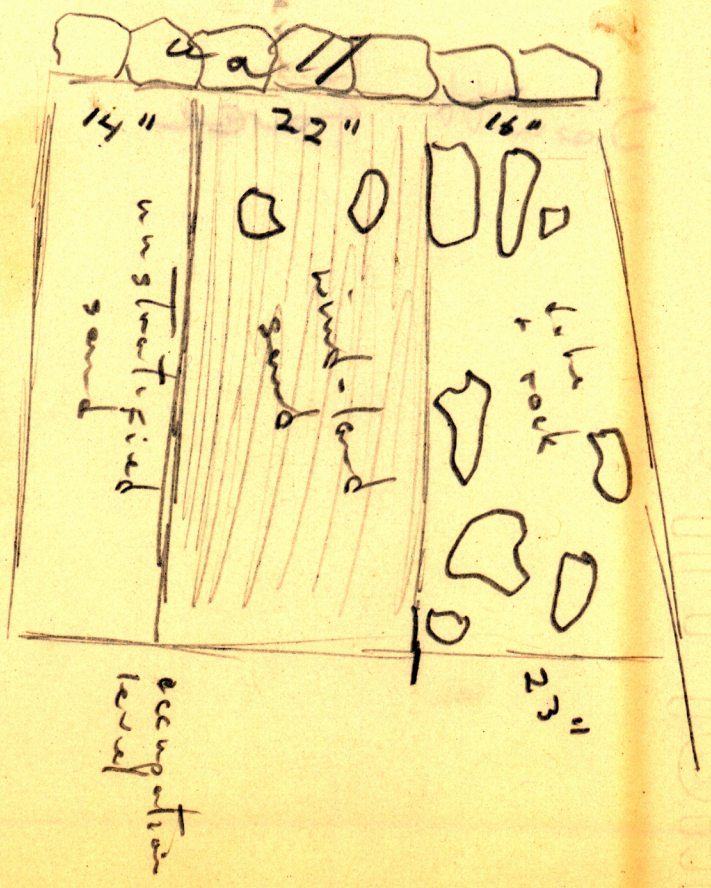
Stone-cut design - 115" from
S.E. corner - 72" from N.W. corner - 12"
from surface



East face



West face



8/10/37

Room #8

Adjacent to and north of Room #1.

8/11/37

Human bones. Infant's right pelvis. Scattered above it are fragments of adult ribs, distal part of infant tibia, and clavicle. All bones rest on an occupation level. Lots of equisetum fragments. Position: south wall 18", southeast corner 22", 52" down on south wall.

8/13/37

Head of adolescent. Humerus from southwest corner of room just below surface. Femur and another humerus from same locality.

8/17/37

Found stone-slab lined fire pit sunken into floor. Pit approximately 2' in diameter. North edge of pit from north wall 21", east edge from east wall of room 8". Depth of first floor, in which pit appears, 58" at south wall. In northeast corner 40". One foot below first floor is a second occupation level. Depth of second floor at south wall 70". 6'8" from southeast corner, along side south wall is pile of ash about 1' long, 8" deep, lying on second floor and extending up to level of first floor. South wall of this room is based on level of first floor. A plugged doorway is located 27" from southeast corner, width 19". Extends from top of wall (ground level) 32" down (26" above floor). Masonry similar to

8/17/37

Pg. 2 of Room #8

Room #8

wall construction.

8/20/37

A length of east wall of room extending 3' from southeast corner collapsed. In wall are fragments of human ribs and turkey bones.

X-TRA
TONE

H & J

EXCAVATION RECORD

Description of room fill:

Site: Bc 51

Date: Aug-20-37

Season: Summer '37

Excavated by:

Chart No.:

Room No.: 8

Kiva:

Plaza:

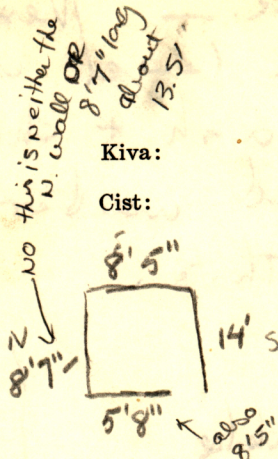
Shrine:

Altar:

Cist:

Plan:

1. Form and dimensions:



N.W corner 3'7" deep
S.W corner 6'2" "

2. Walls and floors:

3. Opening:

plugged doorway - 26" from floor - 37" deep - 19" wide
27" from SE. corner masonry plug.

4. Sub-structures or special features:

- 2 fireplaces in occupation level

Architecture and building materials used:

1. Masonry or adobe:

sandstone masonry

2. Plastering:

no plaster preserved

3. Roofing:

appeared to be unroofed

111. Condition and description:

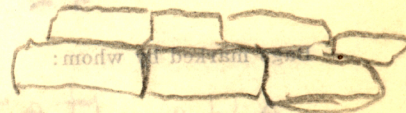
1. Floor sequence:

one occupation level of hard earth
3'6" deep at E. wall.

2. Wall sequence:

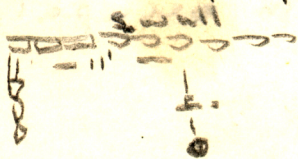
West wall rough, un-cut stone - irregular
other walls - coursed cut stone

3. Special features:



27
 11/2
 Description of room fill: First two feet were hand adobe & fallen wall rock. — Next two feet (down to occupation level) was wind-laid sand with a little ash + charcoal — Unstratified sand appeared under floor — Dug thru only 18" of this.

Pottery: nothing restorable
 (corrugated olla, possibly restorable — 11' from S.E. corner — 4' from S. wall



(1) few long bones, rib, scraps of palms — SE corner of S. wall 3' —
 (2) a few ribs inside of E wall at S.E. corner —

Animal bones: turkey bones with above ribs + 2 usual gophers etc.

Misc. data:

Photographed: By Bliss

Sketched:

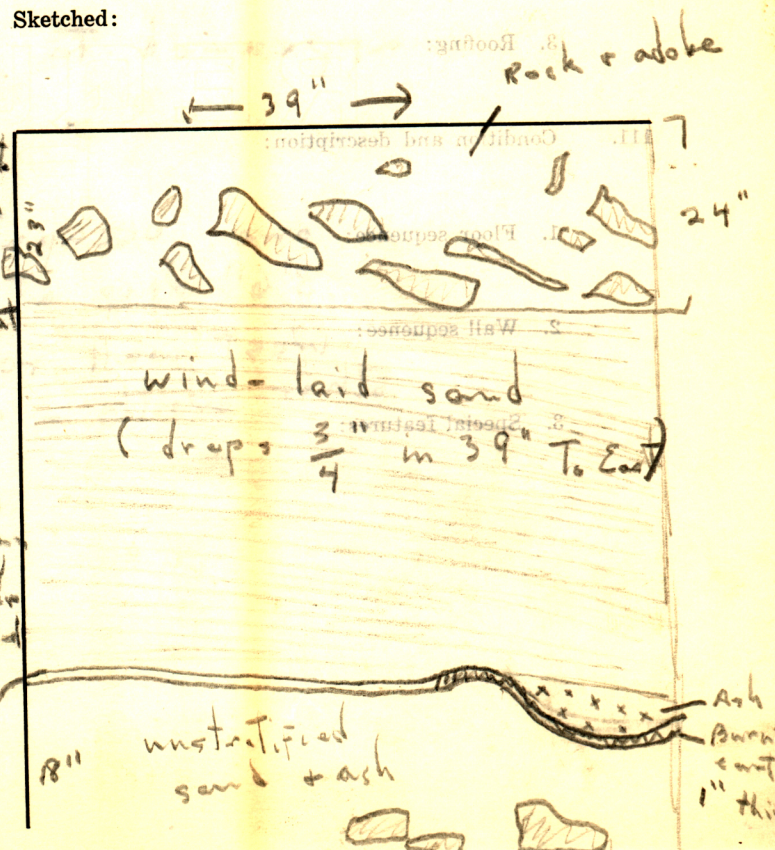
Artifacts:
 Broken metals — 9' 6" — NE corner
 7' 7" S. wall
 worked stone (3) 3' 8" — NW corner
 3' 4" NW " of strat.
 Mame — on floor — S.E. corner 5' 9"
 NE 7'
 Broken Metals — Base of S. Side of Strat.
 55" — S. wall
 73" — deep
 75" N.E. corner
 92" S.E. "

Bags marked by whom:

Alden Hayes

for other strat. faces — see padded report.

3 Mame (0)
 strat. column level — 3-4)
 NW. corner
 Bottom level



Level 0-1 in that = was rock
and dobe and nothing else.

Level 1-2 - ditto with exception
of a broken mano next to
wall - 22" from NW corner of
street.

Level 2-3 - at top of level
began the wind-blown sand.
few shreds -

Level 3-4. More of above.
at ~~the~~ bottom of level in the
N.W. corner - 3 broken mano
or smoothy stones.

Level 4-5 - at top of
level on S.E. corner - ash
deposit covering burnt earth.
undoubtedly of fireplace - it
was on a level with the
fireplace in East end of the
room.

EXCAVATION RECORD

Description of room fill:

Site: BC 51

Date: 8/10/37

Season: 1937

Excavated by: Schaffer

Chart No.: 1

Room No.: 8

Kiva: —

Plaza: —

Shrine: —

Altar: —


Cist: —

Plan:

- 1. Form and dimensions: I suppose that the room will be rectangular. No west wall was found when I left. The north and south walls were 5' apart.
- 2. Walls and floors: The walls were made rather crudely of stone with adobe plaster. No floors found.
- 3. Opening: None
- 4. Sub-structures or special features: None

Architecture and building materials used:

Stone and adobe

- 1. Masonry or adobe: Rough, crude work  - rocks of varied sizes
- 2. Plastering: None —
- 3. Roofing: None

111. Condition and description:

- 1. Floor sequence: —
- 2. Wall sequence: Walls in fair shape
- 3. Special features: —

Description of room fill:

Soft ~~of~~ blow sand and a great deal of rock material. Many large rocks. Many pot sherds, quite a number of artifacts.

Pottery:

Many varied sherds.
No whole pots.

Burials:

None

Animal bones:

Turkey bones.

Misc. data:

Took down two levels.
Never found west wall.

Artifacts:

Axle Sharpened - Level I
Mans (Broken) - Level I

Bags marked by whom:

Schafer

Photographed: —

Sketched: —

