

**COLLECTION:** E. H. Morris Collection at the University of Colorado Museum

**CDI  
ACCESSION  
NUMBER:**

000146

**ERRATA:**

Copy dark in some places.

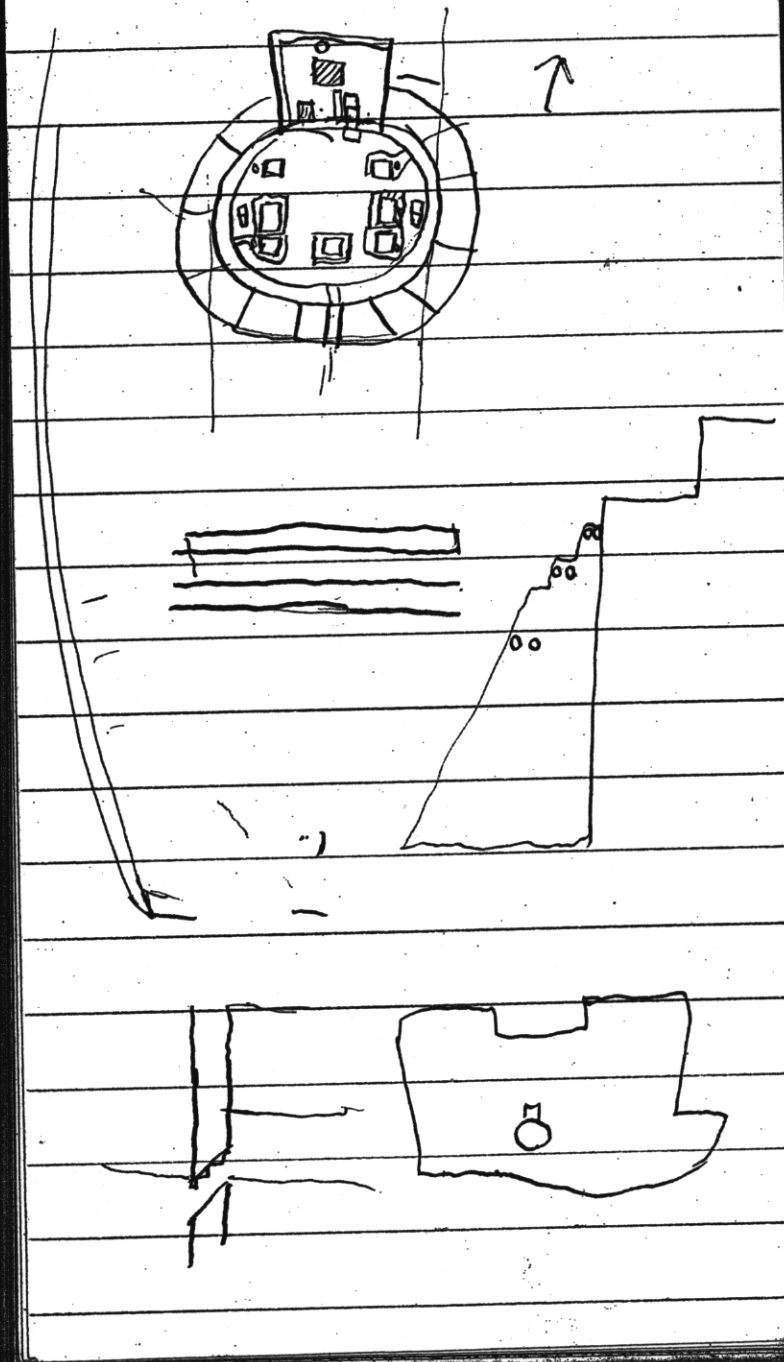
**COMMENTS:**

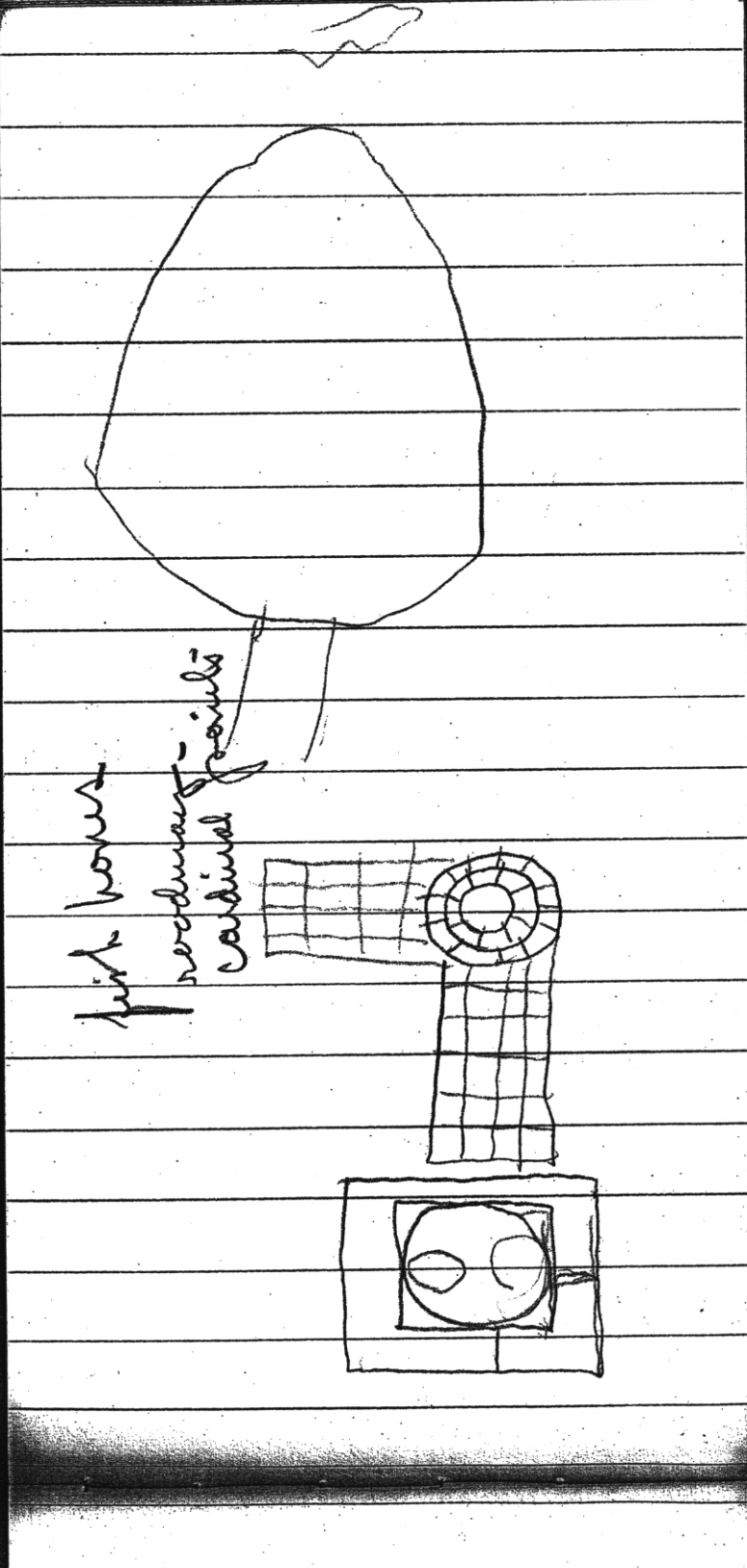
Part 2 of 2 (pages 31-60). Handwritten, difficult to read in some places.

**CITATION:**

Morris, E. H.  
circa 1917 Field Notebook from the E. H. Morris Collection. In E. H. Morris Collection,  
AZRU232, Colorado University Museum, Boulder.

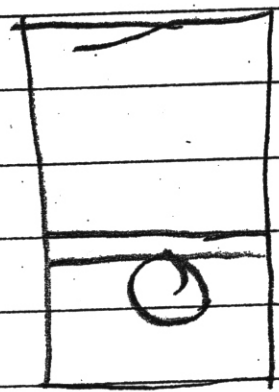






pink house  
redman  
cardinal points

2" square



5'10" - 7,2

5-10  
2.2

1-9' long  
2-9 1/2 "

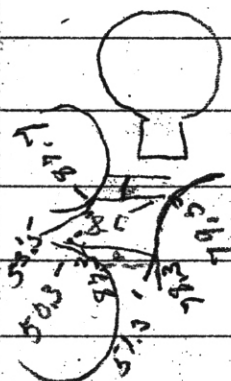
1/2 - W. end 2 1/2  
1-2 - S 11 6 1/2

Thickness, 1-16"

S.S. curb, heavy flange

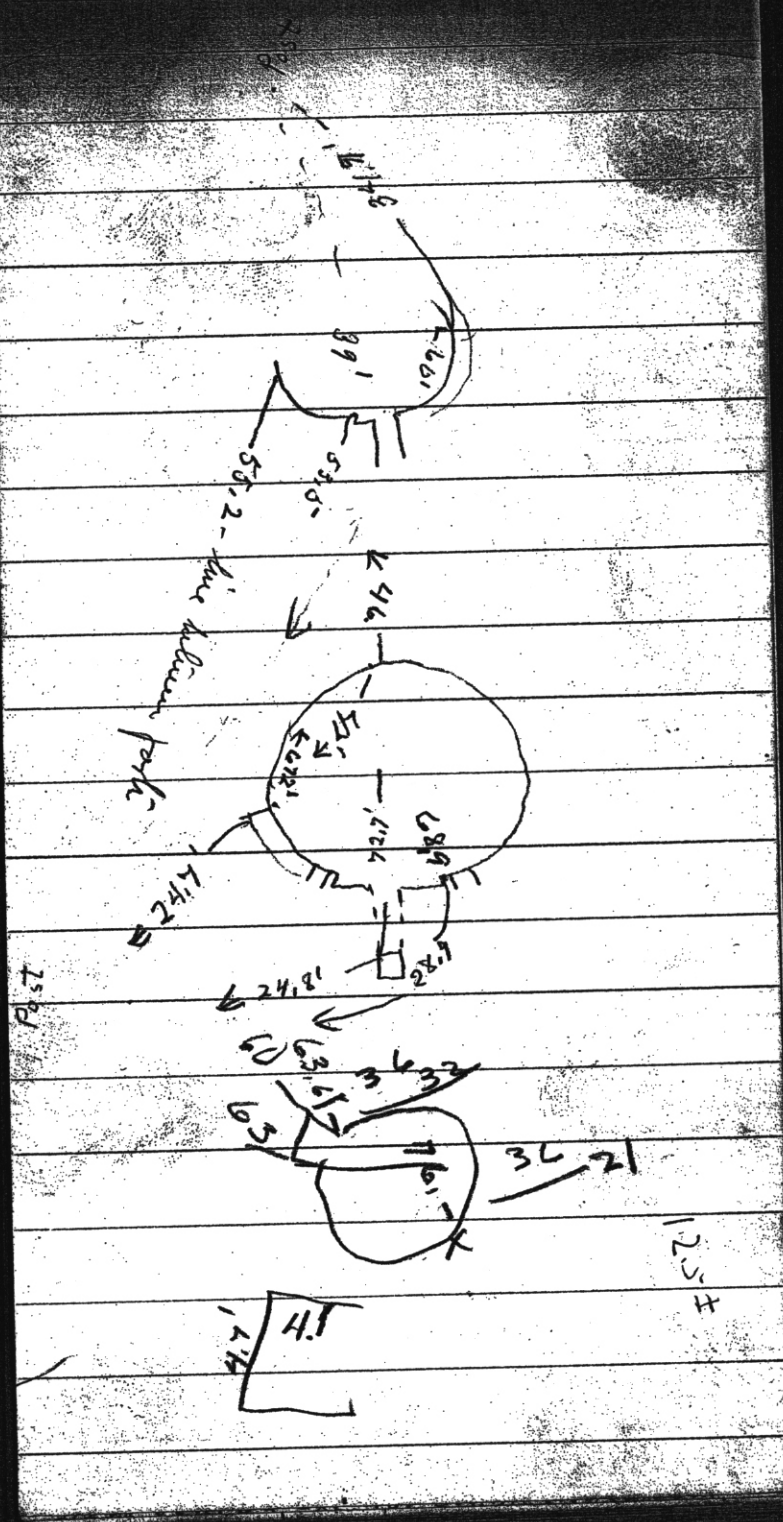
around front W. end, 30" diam

floor below 1+2



- 20" surface
- 2" refuse
- 8" earth floor
- 5" earth
- 2" spalls
- 8" earth, few spalls
- not cut

N.S. Section Room A 37



South Kiva

Bench ht 2'9" S. Recess, d, 9"  
" " " w. 5'

Recess to n. side of ven opening, 2'8" <sup>shaft</sup>  
Ven. Shaft, 1'4" square  
" tunnel 1'4" wide, 1'11" deep  
Plaster, 1'5" wide, Bench

Plaster 1, adobe; 2, white; 3, red  
4, adobe; 5, white; 6, dark brown; 7  
adobe; 8, white; 9, red; 10, adobe  
5, very black from smoke  
10 pillars, logs in 3 and 5, examined, no

offerings found. Those in 1, 2, 4, 6  
& 10 absent, walls torn down to  
average of bench level. Pil logs, each  
8-9" diam - 3' long.  
Floor definable, not very dark

North Kiva

ht of bench 2'8"; width 10". No pillars  
Ven. tunnel, 2' deep, 1'2" wide

<sup>1 1/2"</sup> <sub>1 1/2"</sub> 2 1/2". Tunnel anomalous, both below  
floor, + above, ext to bench level. <sup>Diam 14'</sup>  
no plaster remaining. walls & corners  
thick good face, good corners, turn down  
to bench level. East side, entrance 2'  
same ven by etc. for cobbles

Room A1,

N. end, 6'2" ; S. end 6'4"  
 length 8'8"

depth E. side 9" - W 1'6"

Foundation course of s. s.

E + S. walls mostly cobbles,

N. cobbles + ss, W. all ss,

above four courses

walls 9" thick, Red plaster

from walls covered floor

Ht. of floor above s. cor —

aq. outer face of S wall at S.W. cor  
 s. place, oval, 14" wide x 2" long,  
 2" deep  
 flat stones on edge. In it

A 61 inc ring —

E + W. 7' N + S 6'

depth, S.E. cor 5" ; N.W 1'6"

W wall of cobbles, N + S of S.S

N.W all 7" thick, ~~South~~ W 9"

Red plaster on floor, worked

down from walls

A. 7. - all walls of cotton  
 N. & S. 5'9", E & W, 11'  
 depth 5 sides of N. wall 6" E, 1'6"  
 Red plaster on floor  
 Ceiling burned, evidently  
 before contents were removed.  
 At least 3 large ear jals  
 were crushed down against  
 E. wall. 5' from E. wall and 6"  
 from N. was a flat white  
 sandstone tablet with many  
 things on it. Just west of the  
 tablet was a yellow cult  
 or tsamania and a very  
 well made grooved axe.  
 Beneath a <sup>cup</sup> corrugated pot  
 was buried in the N.W. corner,  
 its mouth flush with the  
 floor, and covered by an  
 stone slab - rough, scattered  
 over floor were fragments

companioning the bottom of  
a h-o-u-bowl, one which  
is draining of a bird in  
field flight, with twig or  
grass in its bill.

Fragments of stone slabs were  
scattered over the floor

A. 8.

E 8 W, 6' 9", N 5 S, 7'  
depth, N side 14" S, 23",  
walls tinted red, all of cobbles.  
Gravel - - under floor,  
a new manure, blocked out  
but removed was built into  
the wall 18" from east end  
a broken manure and 2 small  
ones were on floor

A.9.

N.S. 6' T. E. 7 W, 10'  
 length, S side 0, N.E. cor 9"  
 surface in N.E. cor, more hollow  
 1'6" across 2" deep, no lines  
 of red plaster, 3 over against  
 west wall

— In corner formed by wall  
 of S & N wall of T. lay a mistake  
 There may have been a room  
 there, but I could not make  
 certain.

A.10

N.S. 5'9" E 7 W, 9'6"  
 length, S, 0, N, 5"  
 a man lay in S.W. cor  
 frags of at least 2 ss. slabs  
 scattered along N. wall  
 not the red plaster

All

E. end 5'9", W. 5'

E & W, 7'10"

Depth S. E. cor to N. W. 1'8"

Fire place, N. W. cor  $\nabla$  19" diam

10" deep, lined with Totoloha

on edge. Floor red from wall

flashes. A slab 14" x 16" x 1 1/2"

lay on floor E. of fireplace.

Burial no in N. E. cor

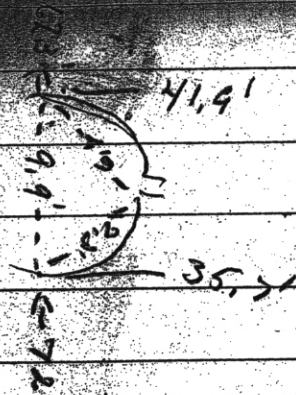
no 1. Adult, on face  
head to east, arms beneath  
humb, hands at throat.  
Left leg extended to knee.  
Foot pressed down on  
buttocks; right folded under  
body, against inner end of  
small. 2' below surface.

no. 2. Adult, young,  
both little worn. On left  
side tightly flexed  
head to south. At  
center of hind 18" below  
no. 1.

no 3. Infant, head to  
S.W. folded in humb,  
head pointing sharply  
downward as S.W. side

of wall behind a cedar  
log 1' below no 1.

no 4. Adult on left side  
head to west. Front turned  
so skull rested on face  
Right arm slightly  
bent, hand under upper  
soft part of jaw, left  
humerus ~~straight~~  
|| to side, forearm  
crossed under abdomen  
hand under right elbow  
Legs tightly folded at  
angle of 45° to trunk at  
right side. Good shell  
(no - ) at n. center of  
piece  $2\frac{1}{2}$ ' below no 1



Ven = 1' wide

1.8' high

Depth 6.2 + 1.5'



Ven. opening to deflector 2.3'

Def 1.9' long, 4" wide

Fire hole 3.3' from ven. open

" " 1.8' wide 1.1' deep

A 25

N. S. 7' 1"; N. side 7'

S. side 7' 6"

greatest depth 21 floors

red, poorly defined

defined fire hole

at center. Metate

1 well marked slab,

2 irregular ones &amp; chunks

found paper by center of  
west wall

A 26

S. side 7 1/2'; S wall at e end

9" wide 2 wall 4"

E. side 9', N. side 7' 8"

W side 8' Max depth 1' 3"

ground fl. 4 manas.

broken slab on floor

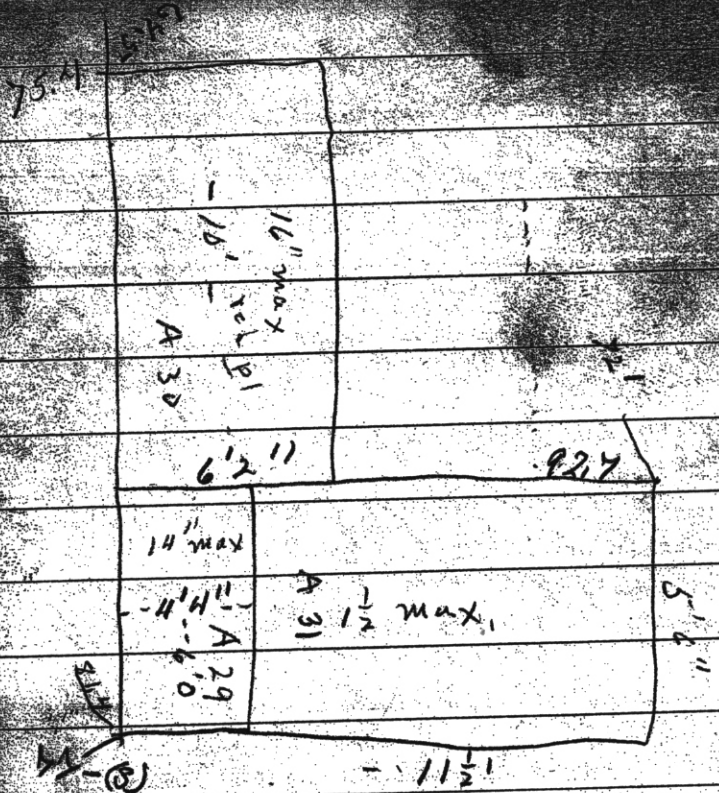
A 27

E. end 9' W. end 7 $\frac{1}{2}$ '  
 N. side 8'3", S. side 7'3"  
 Max depth 1'6"

This + preceding an addition  
 built over ref. def. which  
 had much & settled.

A 28

Pit room in line with  
 N. side of wall 18" west.  
 4'9" E. & W - 5'8" N & S with  
 top half full of clean earth  
 dumped in, balance at  
 refuse



Room A 29. Length 6'0", W. 4'4"  
 max depth 1'4"  
 Floor hard and smooth,  
 but showed little stain  
 from use.

Room A 30. Length 10', W 6'2"  
 max depth 1'4". There Rod Run  
 and fl on walls, at west  
 center there was a metal  
 upside down and in n.e. corner  
 a man

Room A 31. Length 11'2".

W. 5'6". 1 $\frac{1}{2}$ ' more depth.

11 to W. wall in the N.W. corner.

was a hand-stoped fire-

place 2'4" long 1'3" wide

and 8" deep. It was floored

with cobbles. The sides were

of long flat cobbles and

pieces of sandstone set

on end, set 8" above the

floor of the room.

Immediately north of the

fire place there was a

stone hearth 1'4" long 1'2" wide

and 9" deep, entirely above

the floor. The e, s, & n sides

and the floor were of

the same. The ~~W~~ <sup>side</sup> wall

was formed by the wall

of the room. ~~It was~~

were formed by the wall  
of the room, just east

of this line were a  
number of sandstone  
slabs which apparently  
had formed another line  
larger than the first. All  
~~were~~ <sup>had</sup> fallen so that the  
original arrangement was  
not evident. Below this

heap of slabs and the  
wall, i. e. east of the fire-  
place, lay a broken  
metate and two manos.

Strewed from the intact line  
southward over the floor  
were fragments of an unbroken  
small number of s. d. slabs,  
and a metal ~~hook~~ <sup>hook</sup> ~~is~~ <sup>is</sup> ~~at~~ <sup>at</sup> ~~the~~ <sup>the</sup>

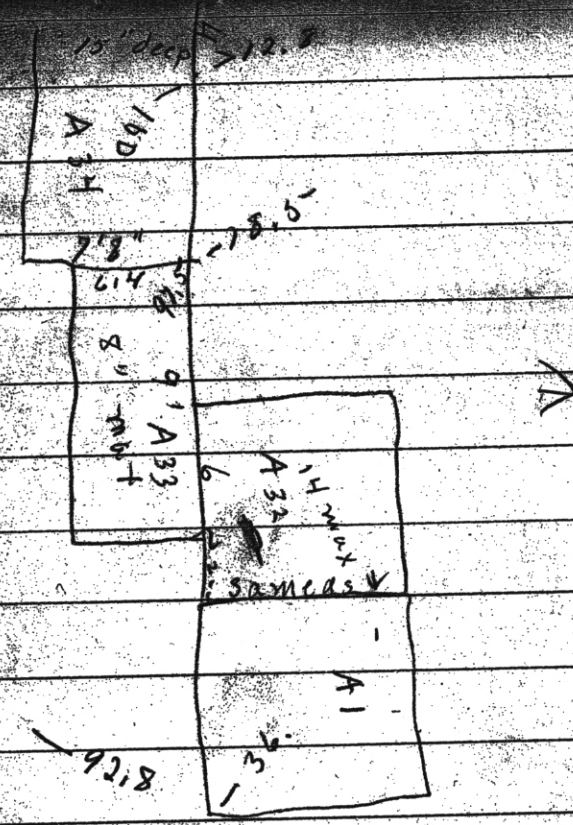
In the S. W. corner where  
there was a fireplace, it  
cut 2" beneath the floor,  
was 1' 2" <sup>E. + W.</sup> ~~wide~~ <sup>wide</sup> + 1' 4"  
long. The E. + W. side ends

were blocks of 3.5 out on  
 edge, rising 6" above the  
 floor. The block on south  
 side near the S wall of  
 the room. Touching this  
 and resting upon the end  
 stone ends of the fireplace  
 was a baking slab  
 22" long, 14" wide and  $1\frac{3}{4}$ "  
 thick. It was of coarse  
 grained sandstone,  
 rubbed very smooth on  
 top, and ~~had~~ <sup>had</sup> thoroughly  
 blackened and burned  
 to the point of disintegration.  
 The floor of the room  
 was a hard long one

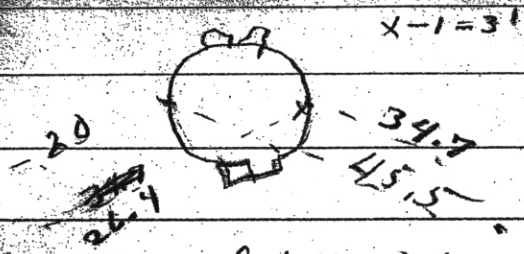
3' 5" for a head  
 15' below floor from S wall  
 along S wall a layer of stone  
 under of floor level

15' deep > 12.5

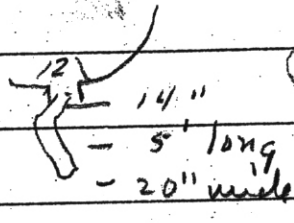
3' x 4' for a shed  
12' below float from 3' as preface  
along the wall a lower part  
1' more of. Dohy floor level



A 34, Small of sandstones,  
many of them curved corner  
stones as well squared as any  
in just ruin, used indiscriminately,  
7' from E wall a car got crushed  
down, continued of it 5' more,  
a broken sandal frame (no - )  
4 axes (not ) from of  
ruined a. 2. bits



Wall pocket n. side, irregular,  
 bottom 6" above floor  
 18" high front 8" at back  
 23" wide 14" deep Long  
 groove made by sharp  
 digging imp in roof  
 circular hole, altogether  
 back of wall just E. of first  
 20" in diam 9" deep top  
 18" above floor  
 3rd wall pocket 18"  
 from E side S. near 7" above  
 floor 18" across 1" high  
 5" deep  
 11" diam  
 7.6 below SW. cor

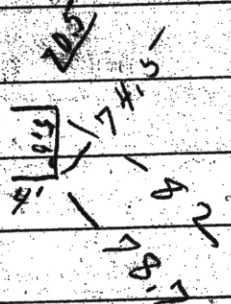

 Oval 2 feet  
 14" at top  
 - 5' long  
 - 20" wide  
 not unknown

Bath n. & s. sides of Kiva  
 4 ft from bottom to sur-  
 of natural earth, then 3' red  
 3' darker earth mixed  
 with red pine  
 13" clay earth  
 25" clay earth by level on top  
 4" fine sand & shells & earth  
 6 1/2" clay earth  
 7" fine broken shells & bones  
 6" of red earth

36  
 13  
 2.5  
 4.  
 6.5  
 7.  
 4  
 118  
 123 0      10.3

There had been a room  
 0 0 "      0 0 "

There had been a room  
 north of A 20 and W. of A 31,  
~~but~~ ~~was~~ all but the  
 S. E. corner of it had  
 weathered away. By the south  
 wall the floor showed a  
 coating of red, 3' from the E. wall  
 & 1 1/2' from the S. there was  
 a slab ~~him~~ with longer  
 or is n + s. 2' long, 1 1/2" wide  
 and 10" deep, 8" of it being  
 above the floor. The ~~of~~ <sup>top</sup> ~~of~~ <sup>of</sup> bottom  
 was a slab. Between the ~~him~~  
 and the S. wall were 3 thin  
 masses, one on top of the other,  
 and a rubbing of ~~one~~  
 with of the ~~him~~ seen a  
 matrix, and east of it the  
 bottom of a large ear pot  
 the top of which had disappeared  
 from the surface



Bas. plaque at 1 12" diam

" Bowl " 2 8" diam

Fire stick at 3 10" long,  $1\frac{3}{4}$  wide

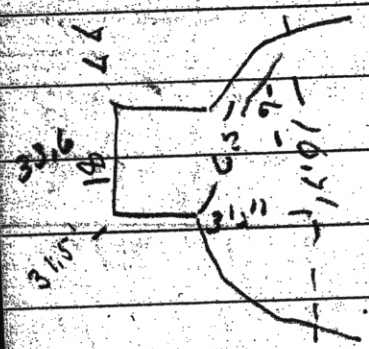
Scraper at 4 } 2 baskets and

Mug at 5 - } dig stick in ven.

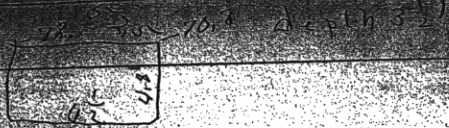
Sandal form in pocket X



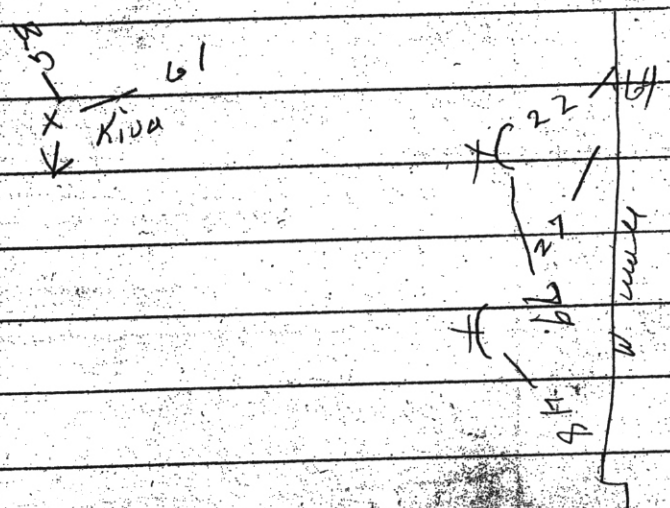
fire hole 6" from diaf  
2' diam, 14" deep, stored  
with stone, 6" of ash



Ht. of wall stone bench  
2' 3" to level surface 3'  
- (Rod) of new tunnel cross  
sticks - cedar - then sticks  
laid lengthwise.



Reached in S wall 14" from E end  
 4" thick 3 high to edge, 2' 1' dense floor,  
 low fat ag center of wall, large  
 slab north fit - fragment of many  
 slabs in first 15" of fill portion  
 of nose along S wall. Roof timbers  
 cedars up to 2" diam had been  
 from N to S, walls 2" thick of  
 other fill of drift. Roof had  
~~arrived to center~~



East used yard level

Earth refuse; sand gravel  
charcoal, a hoop, M. U  
shards 11

Tramped level

Earth; bits of bones,  
crumbs & larger pieces  
of round stone 14"

Refuse - coarse charcoal 28"  
bits broken stones, a bone  
choco shards

Chon sandy earth 12 1/2"

not earth

East & west section a w wall  
of rubble of granite Room 149  
W. wing

